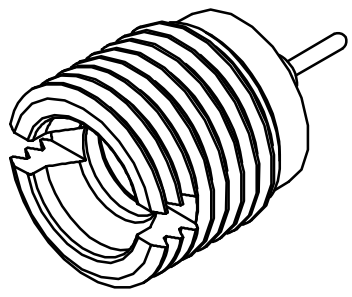
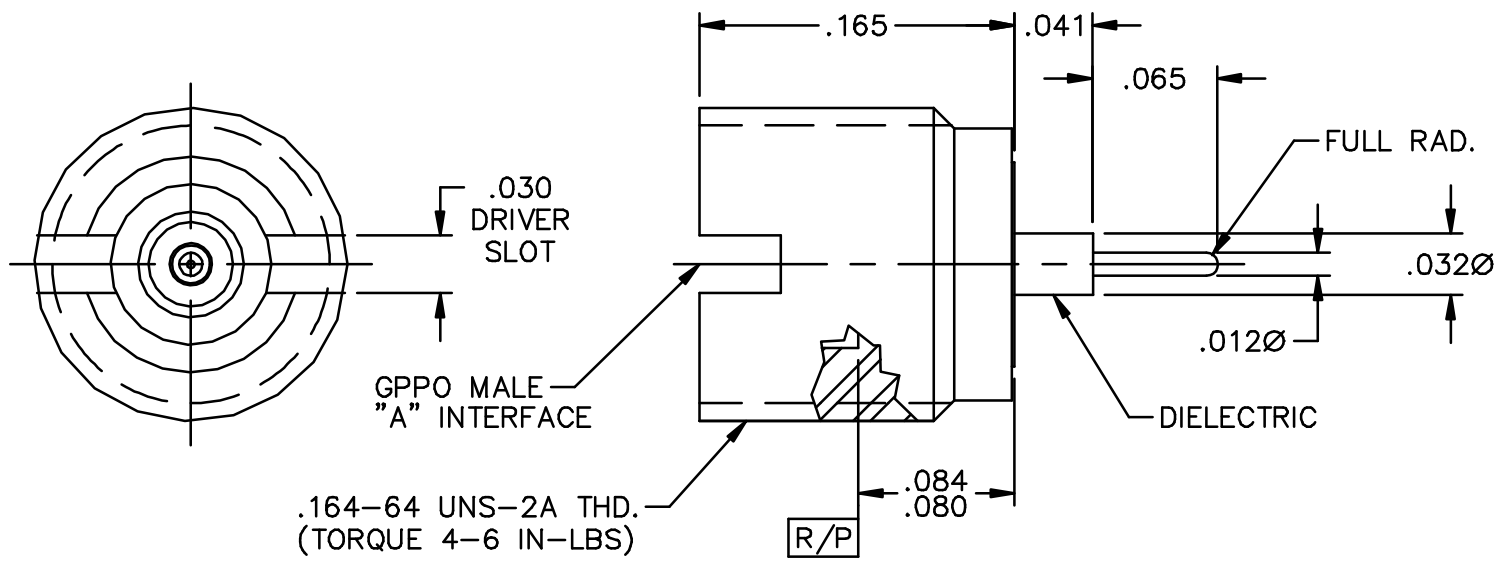


PROTO NUMBER	"A" INTERFACE
B003-L33-02	FULL DETENT
B003-L35-02	SMOOTH BORE



MATERIAL AND FINISH

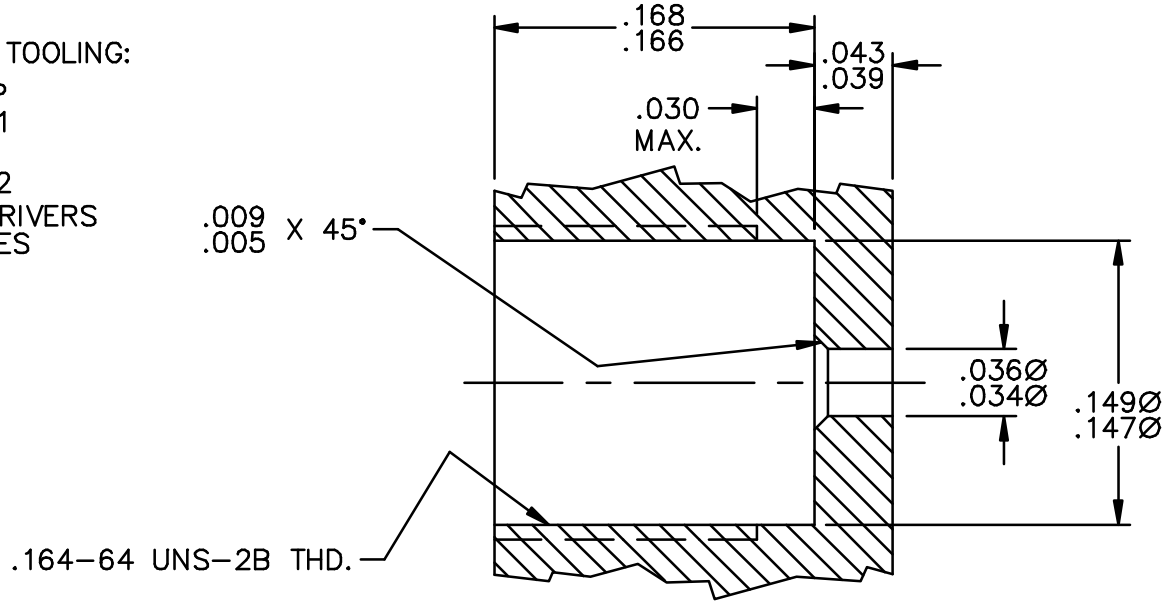
SHROUD AND BUSHING: CRES 303; PASSIVATED
 CENTER CONTACT: BeCu; GOLD PLATE 50-100 μ INCHES
 OVER NICKEL PLATE 50 μ INCHES MIN.
 DIELECTRIC: VIRGIN PTFE (TEFLON)



RECOMMENDED MOUNTING HOLE

RECOMMENDED TOOLING:

- STARTING TAP
B099-A99-01
- BOTTOM TAP
B099-A99-02
- THREAD-IN DRIVERS
B097-A SERIES



GPPO MALE THREAD-IN STRAIGHT TERMINAL (TAB DETENT)

IDENT CODE: 82316
 REVISION: A



SOURCE FILE: SK-1805

DWG. NO.: OL-B003-L3X-02

ASSY. PROC.: -