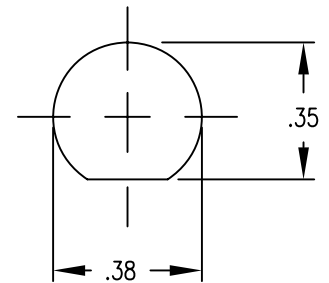
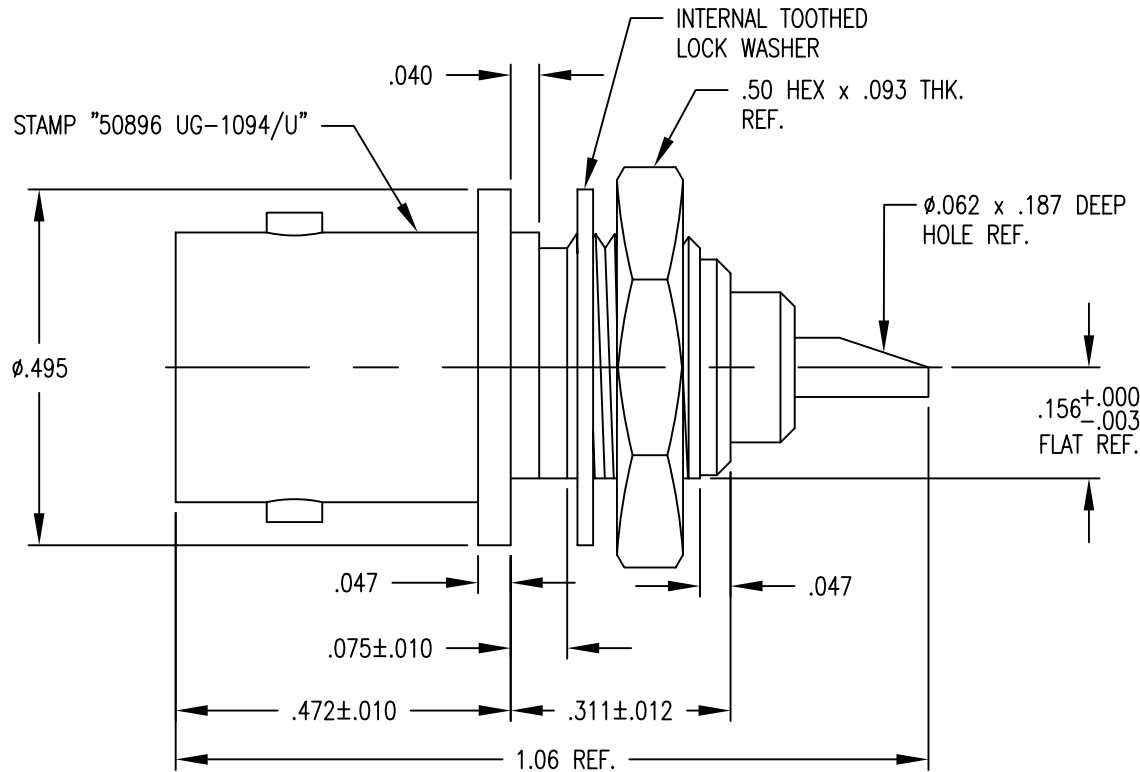


- 1.0 PERFORMANCE
- 1.1 FREQUENCY RANGE: DC-4GHz
- 1.2 VOLTAGE RATING: 500V RMS (sea level)
- 1.3 NOMINAL IMPEDANCE: 50 OHMS
- 1.4 DWV: 1500 V RMS @ 60 Hz (sea level)
- 1.5 TEMPERATURE RANGE: -65°C TO +165°C
- 2.0 MATERIALS
- 2.1 DIELECTRIC: TEFLON, ASTM-D-1710
- 2.2 CENTER CONTACT: BERYLLIUM COPPER ASTM-B-196
- 2.3 LOCKWASHER: PHOSPHOR BRONZE

- 2.4 ALL OTHER METAL PARTS: BRASS, ASTM-B-16
- 3.0 FINISHES
- 3.1 CONTACT: SILVER .000050 MIN.  
GOLD: .000030/Ni MIN.
- 3.2 BODY AND HARDWARE:  
NICKEL: .000100 MIN.  
SILVER: .000050 MIN.
- 4.0 MECHANICAL
- 4.1 INTERFACE IN ACCORDANCE WITH MIL-STD-348
- 4.2 CONTACT RETENTION: 6 LBS AXIAL TORQUE N/A

DWG NO. OL-1094-1 REV. C

STI PART NO.	BODY PLATING	CONTACT PLATING
UG-1094/U	NICKEL	SILVER
UG-1094/U NI/GOLD	NICKEL	GOLD
UG-1094/U SI	SILVER	SILVER
UG-1094/U SI/GOLD	SILVER	GOLD
UG-1094/U LESS HDWR	NICKEL	SILVER



RECOMMENDED PANEL CUTOUT

Rev.	Revisions	Date	Dwn.	Appd.
C	ADD -LESS HDWR	10/27/10	RJG	SJS
B	ADD DIMS & TOL	10/16/03	FSH	FSH
A	ORIGINAL	8/29/01		

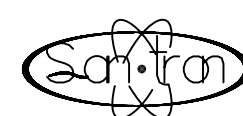
RECOM. STOCK SIZE	FT/M PCS REF. 0107-22	QTY REQD
-------------------	-----------------------	----------

PROPRIETARY  
THIS DRAWING CONTAINS CONFIDENTIAL INFORMATION PROPRIETARY TO SAN\*TRON INC. IT MUST NOT BE REPRODUCED OR DISCLOSED TO OTHERS OR USED IN ANY OTHER WAY, IN WHOLE OR PART EXCEPT AS AUTHORIZED IN WRITING BY SAN\*TRON INCORPORATED.

REMOVE ALL BURRS AND SHARP EDGES .005 MAX. UNLESS OTHERWISE STATED ALL DIMENSIONS ARE IN INCHES AND APPLY AFTER PLATING

UNSPECIFIED TOL.	DWN	JMB	6/12/00
DEC. ± .005	CHKD	SJS	8/29/01
FRAC. ± 1/64	APPR	SJS	8/29/01
ANG. ± 1/2°			

CONCENTRICITY .004 TIR  
ALL MACHINED SURFACES ✓



SAN • TRON, INC.

4 NEWBURYPORT TPK, IPSWICH, MA 01938

TITLE BNC BULKHEAD RECEPTACLE, STRAIGHT, FEMALE, COMMERCIAL	
MATERIAL: SEE NOTE 2.0	FINISH: SEE CHART
FSCM NO. 50896	DWG NO. OL-1094-1
SCALE N/A	REV. C