

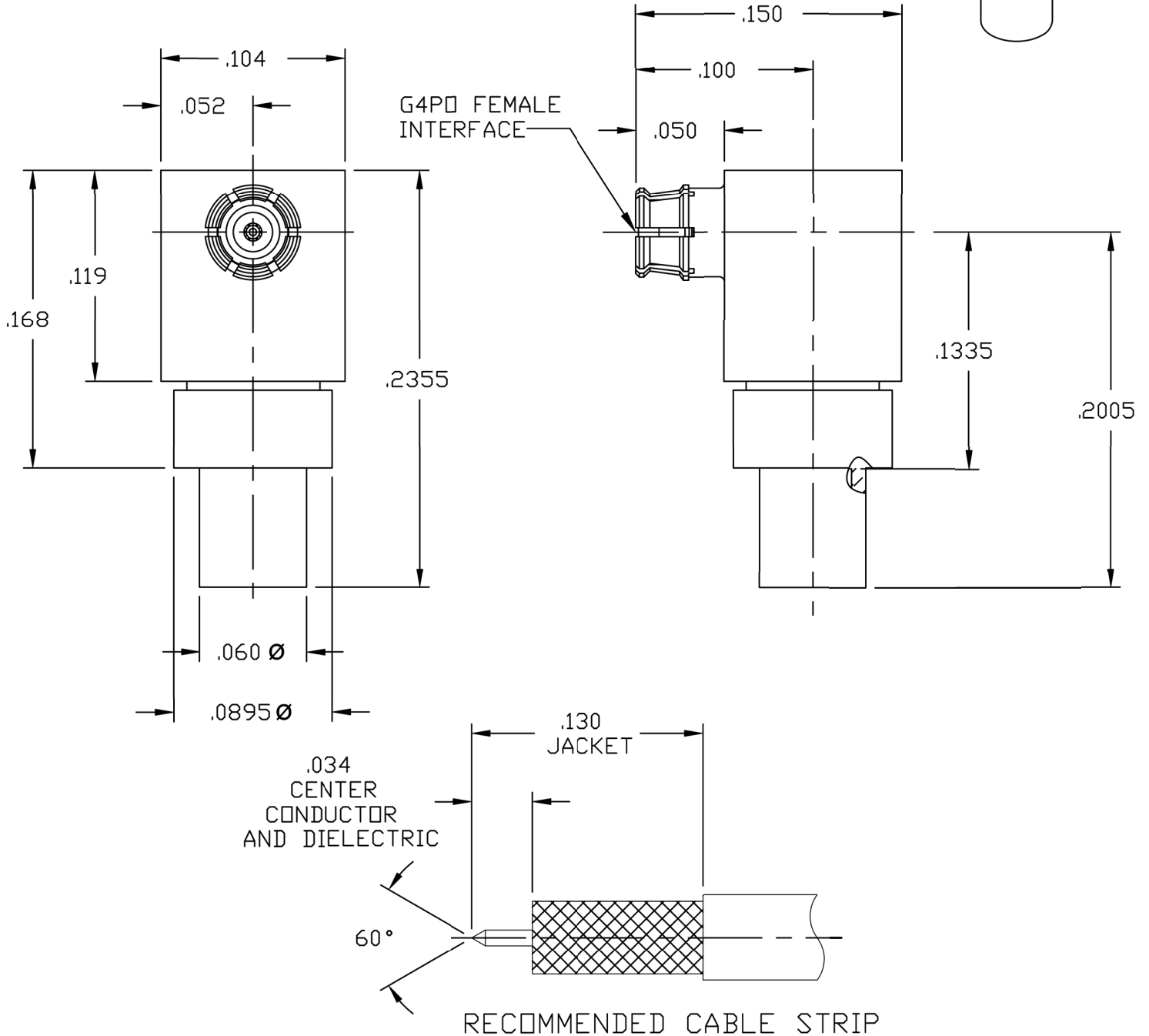
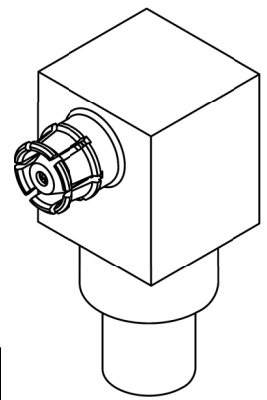
CATALOG NUMBER

S015-Y91-01

MATERIAL AND FINISH

HOUSING AND CENTER CONTACT: BeCu; GOLD PLATE 75 MICROINCHES TYPICAL
OVER NICKEL PLATE 100 MICROINCHES TYPICAL

DIELECTRICS: VIRGIN PTFE
DIELECTRICS: POLYAMIDE-IMIDE



THIS DRAWING AND ANY DATA CONTAINED HEREIN IS THE PROPERTY OF CORNING GILBERT INC. AND CONSTITUTES AND CONTAINS PROPRIETARY AND CONFIDENTIAL INFORMATION. NEITHER RECEIPT NOR POSSESSION OF THIS DRAWING CONFERS OR TRANSFERS ANY RIGHT TO DUPLICATE, USE OR DISCLOSE ANY INFORMATION CONTAINED HEREIN EXCEPT AS EXPRESSLY AUTHORIZED BY CORNING GILBERT INC.

APPROX. WEIGHT: 0.20876727 grams
TOLERANCE: ±.010 .XXX ±.005 ANGULAR ±5°

SIGNATURES		INIT	DATE
DRAWN:	TEF		12/18/12
CHECKED:	MJC		
APPROVED:	TEF		

G4PD R/A TO .041 FLEX CABLE	IDENT CODE: 82316	Corning Gilbert Inc.
	REVISION: 04	

SOURCE FILE: SK-4825	DWG. NO.: OL-S015-Y91-01	ASSY. PROC.: -
----------------------	--------------------------	----------------