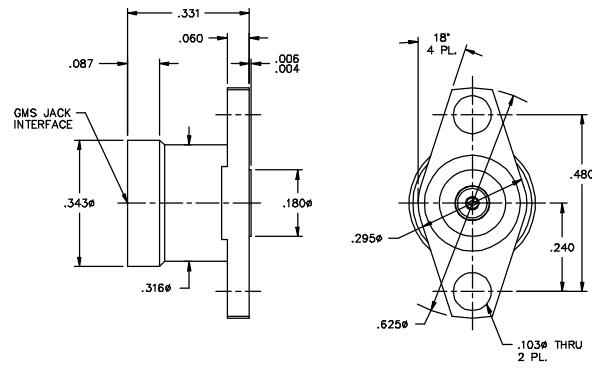


DATE REVISED: 3/2/04

CATALOG NUMBER  
1818-502-3

MATERIAL AND FINISH

FLANGE HOUSING: CRES 303; PASSIVATED  
CENTER CONTACT: BeCu; GOLD PLATE 50-100 MICRONS  
AND JACK HOUSING: OVER NICKEL PLATE 50 MICRONS MIN.  
DIELECTRICS: VIRGIN PTFE (TEFLON)



This drawing and any data contained herein is the property of Corning Gilbert Inc., and constitutes and contains proprietary and confidential information. Neither receipt nor possession of this drawing confers or transfers any right to duplicate, use or disclose any information contained herein except as expressly authorized by Corning Gilbert Inc.

GMS JACK 2 HOLE FLANGE MOUNT ACCEPTS .015 C/C		IDENT CODE: 82316	<b>Corning Gilbert Inc.</b>
		REVISION: C	
SOURCE FILE: MECR# 956	DWG. NO.: OL-1816-502-3	ASSY. PROC.: -	