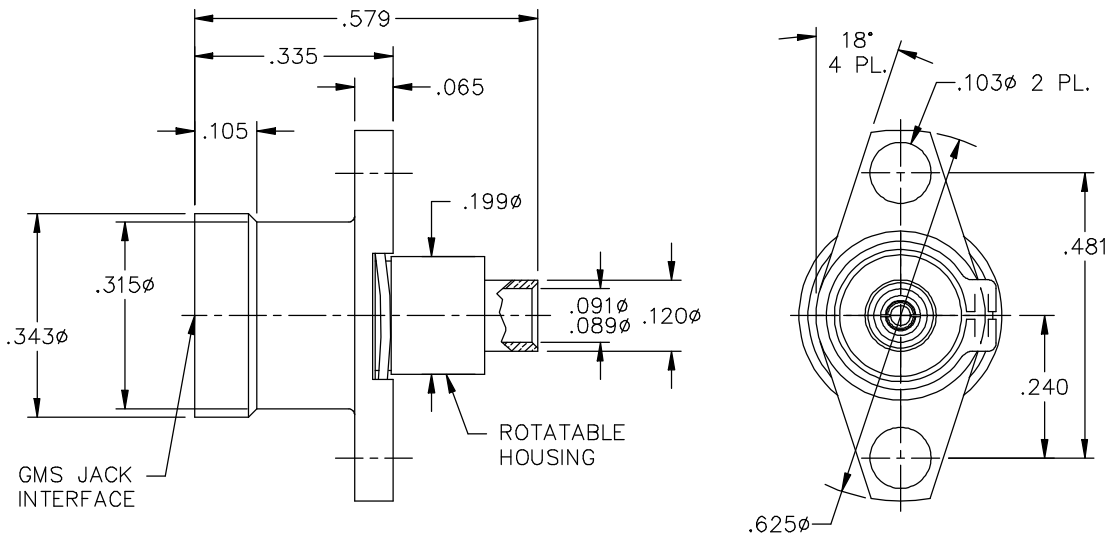
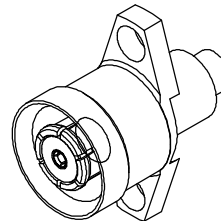


CATALOG NUMBER

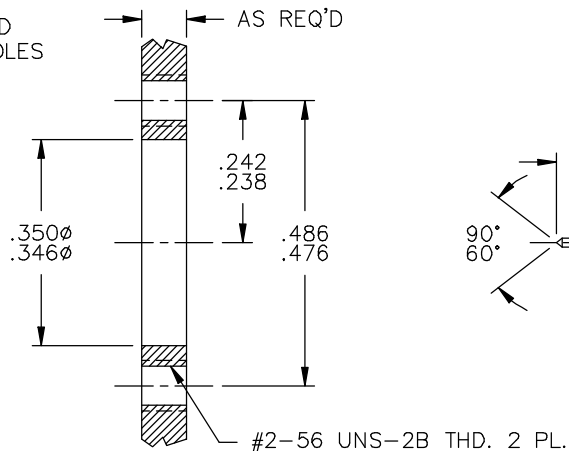
1804-225-1

MATERIAL AND FINISH

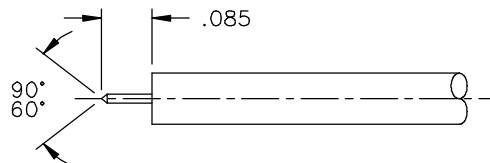
FLANGE HOUSING: CRES 303; PASSIVATED  
 CENTER CONTACT AND OUTER CONDUCTOR: BeCu; GOLD PLATE 50-100 MICROINCHES OVER NICKEL PLATE 50 MICROINCHES MIN.  
 RETAINING RING: BeCu  
 DIELECTRICS: VIRGIN PTFE



RECOMMENDED MOUNTING HOLES



CABLE PREPARATION



This drawing and any data contained herein is the property of Corning Gilbert Inc., and constitutes and contains proprietary and confidential information. Neither receipt nor possession of this drawing confers or transfers any right to duplicate, use or disclose any information contained herein except as expressly authorized by Corning Gilbert Inc.

GMS JACK 2 HOLE FLANGE  
 MOUNT ACCEPTS .086 S/R  
 CABLE (ROTATABLE HOUSING)

IDENT CODE:  
 82316

REVISION: L

**Corning Gilbert Inc.**

SOURCE FILE: MECR# 604

DWG. NO.:

OL-1804-225-1

ASSY. PROC.: AP18-001