

CATALOG NUMBER

1815-604-3

MATERIAL AND FINISH

SNAP MOUNT AND
PLUG HOUSING:

CRES 303; PASSIVATED

CENTER CONTACT
AND REAR HOUSING:BeCu; GOLD PLATE 75 MICROINCHES TYPICAL
OVER NICKEL PLATE 100 MICROINCHES TYPICAL

DIELECTRICS:

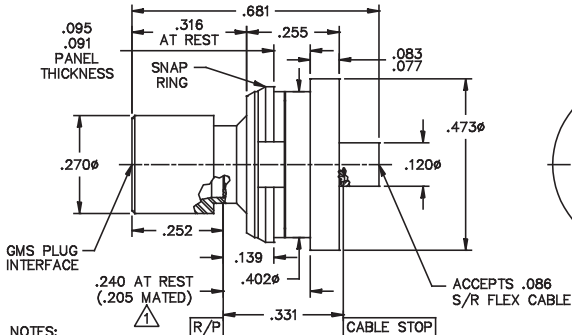
VIRGIN PTFE

SPRING:

17-7 PH STAINLESS STEEL

RETAINING RING:

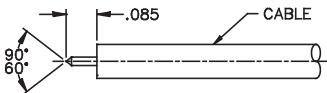
BeCu; NICKEL PLATE 100 MICROINCHES TYPICAL



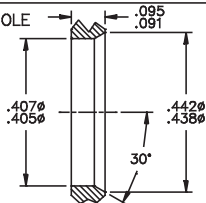
NOTES:

- THE $.205$ RECOMMENDED MATED DIMENSION ALLOWS $.035$ AXIAL FLOAT IN BOTH DIRECTIONS.
- RADIAL FLOAT: $.020$ MIN.
AXIAL FLOAT: $.070$ MIN.

CABLE PREPARATION



MOUNTING HOLE



This drawing and any data contained herein is the property of Corning Gilbert Inc., and constitutes and contains proprietary and confidential information. Neither receipt nor possession of this drawing confers or transfers any right to duplicate, use or disclose any information contained herein except as expressly authorized by Corning Gilbert Inc.

GMS PLUG FLOAT
MOUNT TO $.086$
S/R CABLE

IDENT CODE:
82316

REVISION: K

Corning Gilbert Inc.

SOURCE FILE: MECR# 485

DWG. NO.:

OL-1815-604-3

ASSY. PROC.: AP18-001