

CATALOG NUMBER

H001-D32-01

MATERIAL AND FINISH

FLANGE, PLUG HOUSING,
BUSHING AND RING:

CRES 303; PASSIVATED

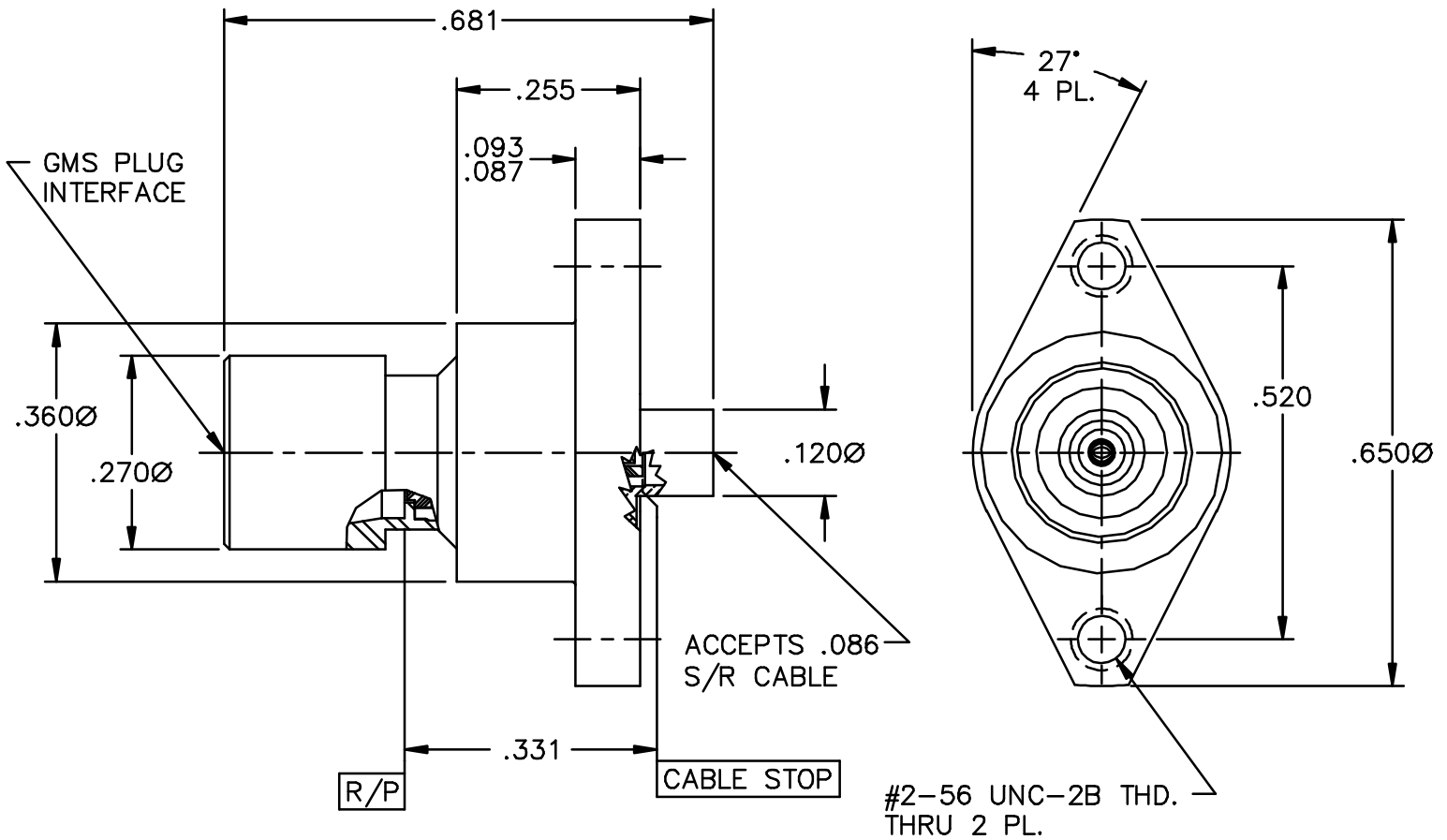
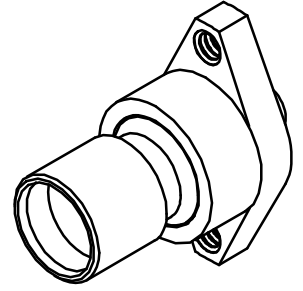
CENTER CONTACT AND
REAR HOUSING:BeCu; GOLD PLATE 50-100 MICROINCHES
OVER NICKEL PLATE 50 MICROINCHES MIN.

DIELECTRICS:

VIRGIN PTFE

SPRING:

17-7 STAINLESS STEEL



This drawing and any data contained herein is the property of Corning Gilbert Inc., and constitutes and contains proprietary and confidential information. Neither receipt nor possession of this drawing confers or transfers any right to duplicate, use or disclose any information contained herein except as expressly authorized by Corning Gilbert Inc.

GMS PLUG FLOAT MOUNT
TO .086 S/R CABLE

IDENT CODE:
82316

REVISION: C

Corning Gilbert Inc.

SOURCE FILE: MECR# 2445

DWG. NO.: OL-H001-D32-01

ASSY. PROC.: AP18-001