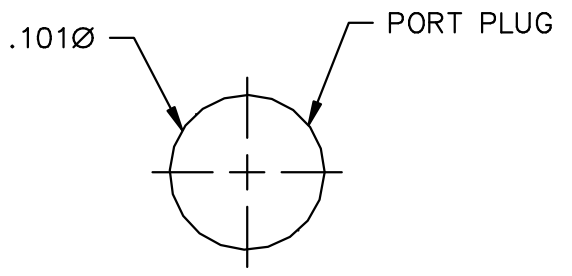
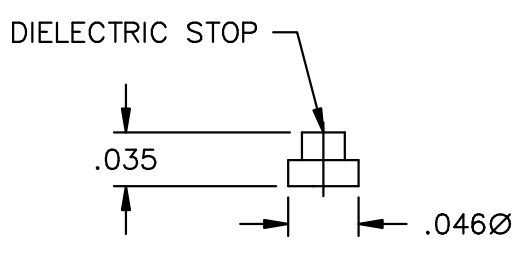
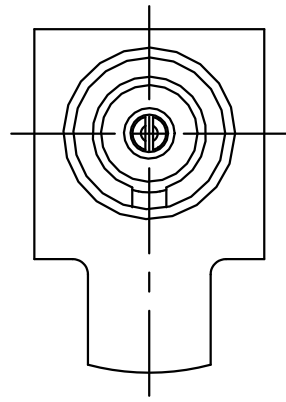
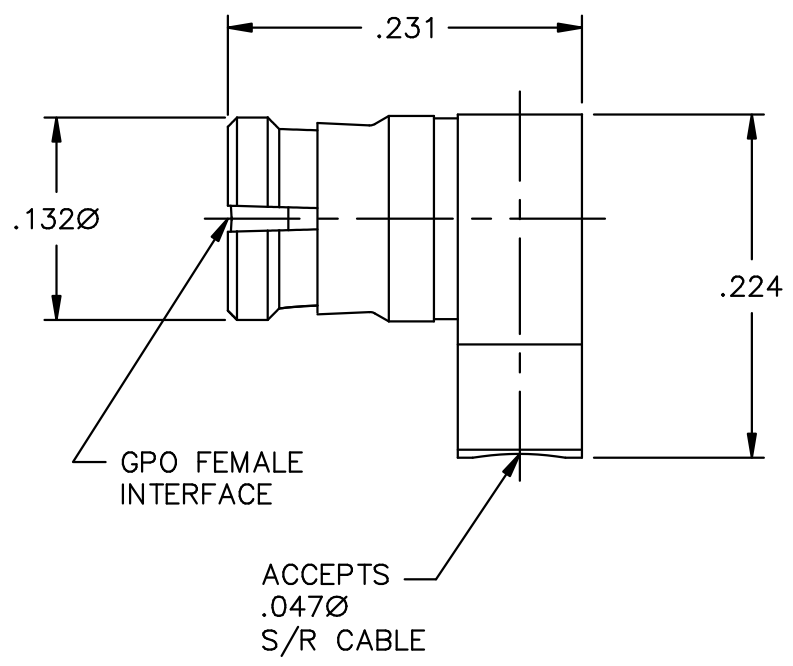
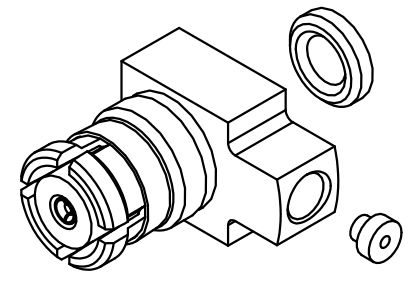


CATALOG NUMBER
0119-845-1

MATERIAL AND FINISH

HOUSING, PORT PLUG,
CENTER CONTACT, AND
ANTI-ROCK/EMI RING:
BeCu; GOLD PLATE 50-100 MICRONS
OVER NICKEL PLATE 50 MICRONS MIN.
DIELECTRIC:
VIRGIN PTFE (TEFLON)
DIELECTRIC STOP
AND REAR TORLON:
TORLON (POLYAMIDE-IMIDE)



TYPICAL VSWR:
1.18 @ 18.0 GHz

This drawing and any data contained herein is the property of Corning Gilbert Inc., and constitutes and contains proprietary and confidential information. Neither receipt nor possession of this drawing confers or transfers any right to duplicate, use or disclose any information contained herein except as expressly authorized by Corning Gilbert Inc.

GPO FEMALE R/A TO
.047 S/R CABLE
(HIGH PERFORMANCE)

IDENT CODE:
82316
REVISION: G

Corning Gilbert Inc.

SOURCE FILE: MECR# 1980 DWG. NO.: OL-0119-845-1 ASSY. PROC.: AP01-019