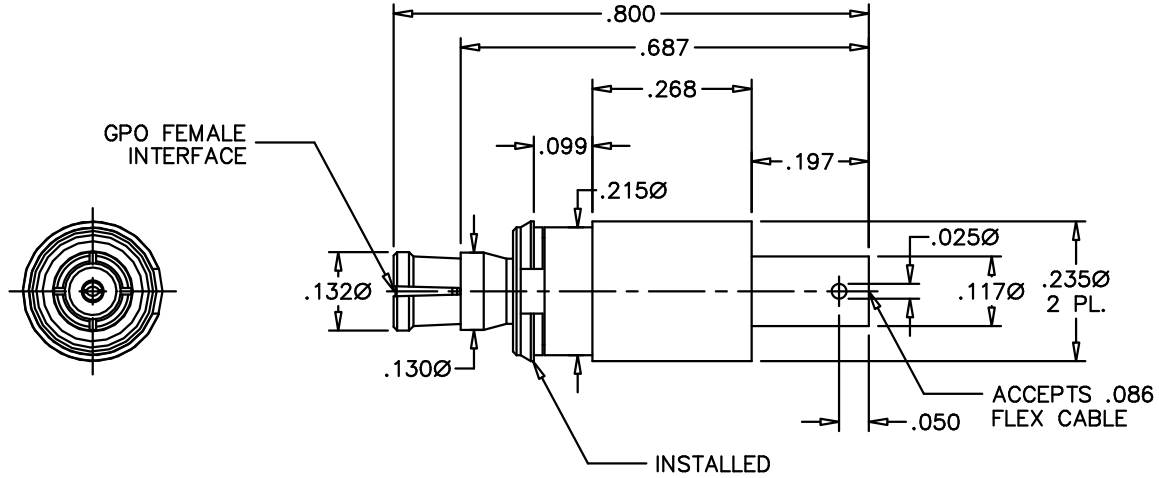
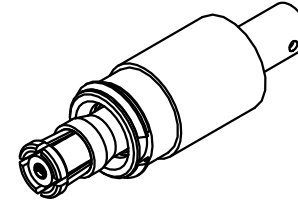


CATALOG NUMBER

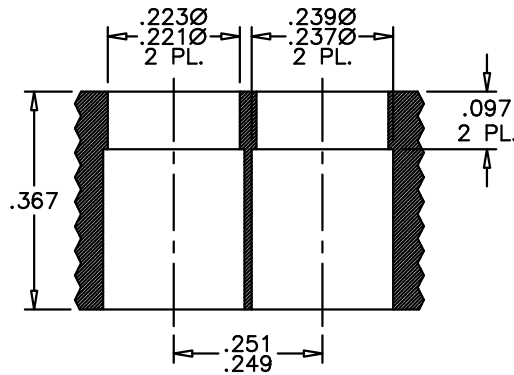
A014-D11-06

MATERIAL AND FINISH

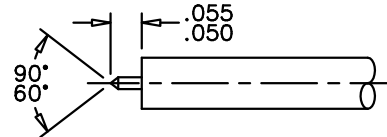
HOUSING AND BUSHING: CRES 303; PASSIVATED  
 CABLE ADAPTER, CENTER CONTACT, AND SNAP RING: BeCu; GOLD PLATE 75 MICRINCHES TYPICAL OVER NICKEL PLATE 100 MICRINCHES TYPICAL  
 DIELECTRICS: VIRGIN PTFE  
 SPRING: 17-7 STAINLESS STEEL; PASSIVATED



RECOMMENDED MOUNTING HOLE



CABLE PREPARATION



This drawing and any data contained herein is the property of Corning Gilbert Inc., and constitutes and contains proprietary and confidential information. Neither receipt nor possession of this drawing confers or transfers any right to duplicate, use or disclose any information contained herein except as expressly authorized by Corning Gilbert Inc.

GPO FEMALE SNAP-IN  
 BULKHEAD FLOAT MOUNT TO  
 .086 CABLE CONNECTOR

IDENT CODE:  
 82316  
 REVISION: A

Corning Gilbert Inc.

SOURCE FILE: SK-4038

DWG. NO.: OL-A014-D11-06

ASSY. PROC.: -