

CATALOG NUMBER

0119-531-1

MATERIAL AND FINISH

HOUSING, CENTER
CONTACT, AND EMI/
ANTI-ROCK RING:BeCu; GOLD PLATE 50-100 μ INCHES
OVER NICKEL PLATE 50 μ INCHES MIN.

DIELECTRIC:

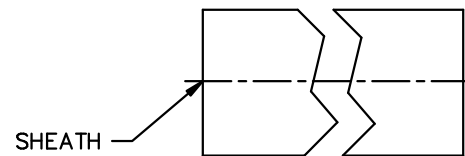
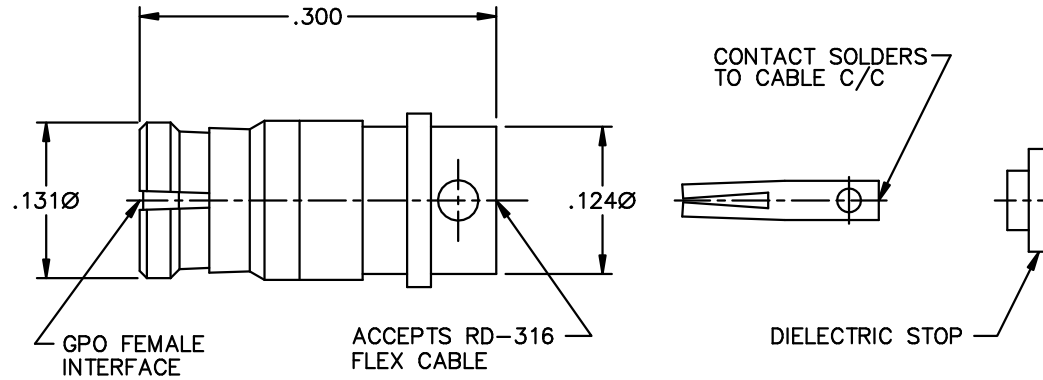
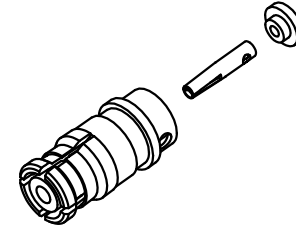
VIRGIN PTFE (TEFLON)

DIELECTRIC STOP:

TORLON (POLYAMIDE-IMIDE)

SHEATH:

HEAT SHRINKABLE TUBING

GPO FEMALE STRAIGHT
TO RD-316 FLEX CABLE
SOLDER ATTACH C/CIDENT CODE:
82316

REVISION: C

GILBERT
ENGINEERING

SOURCE FILE: MECR# 1737

DWG. NO.:

SS-7804-3

ASSY. PROC.: IS-7804-3