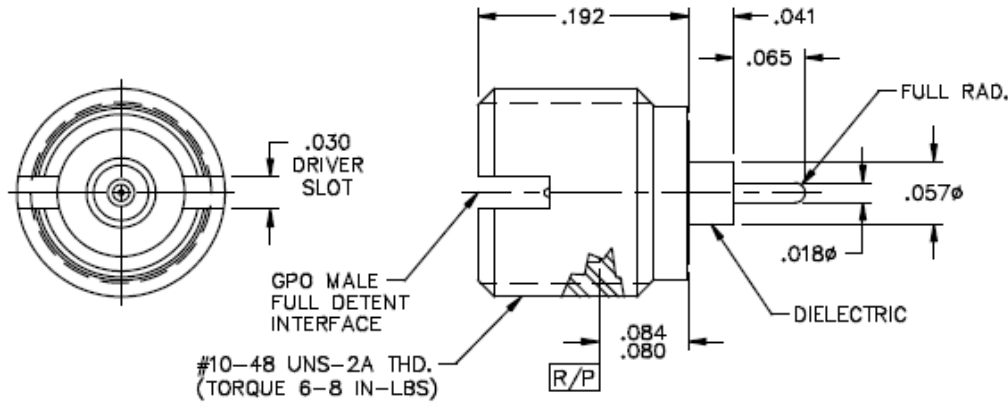
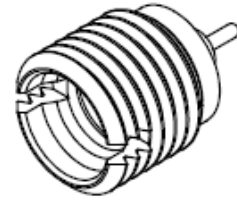


CATALOG NUMBER

0119-582-3

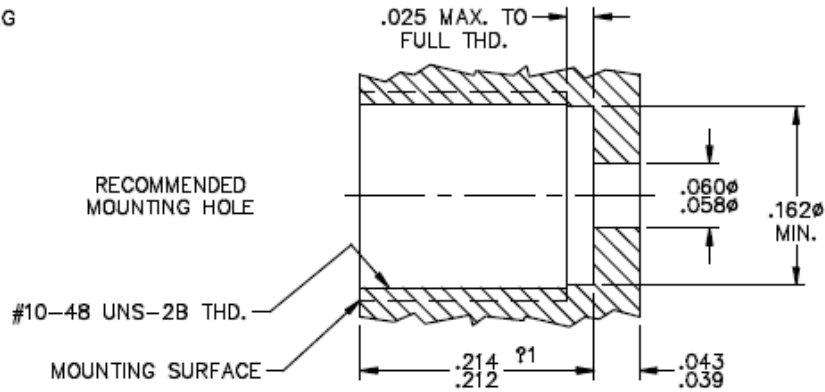
MATERIAL AND FINISH

SHROUD AND BUSHING: CRES 303; PASSIVATED
 CENTER CONTACT: BeCu; GOLD PLATE 50-100 MICRONS
 OVER NICKEL PLATE 50 MICRONS MIN.
 DIELECTRIC: VIRGIN PTFE (TEFLON)



RECOMMENDED TOOLING

- STARTING TAP L091-A99-01
- BOTTOM TAP L091-A99-02
- THREAD-IN DRIVER A097-A99-01



NOTES:

φ1. DIMENSION SHOWN IS FOR FLUSH MOUNTING SURFACE TO MOUNTING SURFACE CONDITION USING .254 LONG INTERCONNECT. USE .190-.194 DIMENSION FOR CONNECTOR FACE TO BE FLUSH WITH MOUNTING SURFACE.

This drawing and any data contained herein is the property of Corning Gilbert Inc., and constitutes and contains proprietary and confidential information. Neither receipt nor possession of this drawing confers or transfers any right to duplicate, use or disclose any information contained herein except as expressly authorized by Corning Gilbert Inc.

GPO MALE FULL DETENT
 THREAD-IN STRAIGHT TERMINAL

IDENT CODE:

82316

REVISION: H

Corning Gilbert Inc.

SOURCE FILE: MECR #659

DWG. NO.:

OL-0119-582-3

ASSY. PROC.:

-