

DATE REVISED: 8/10/10

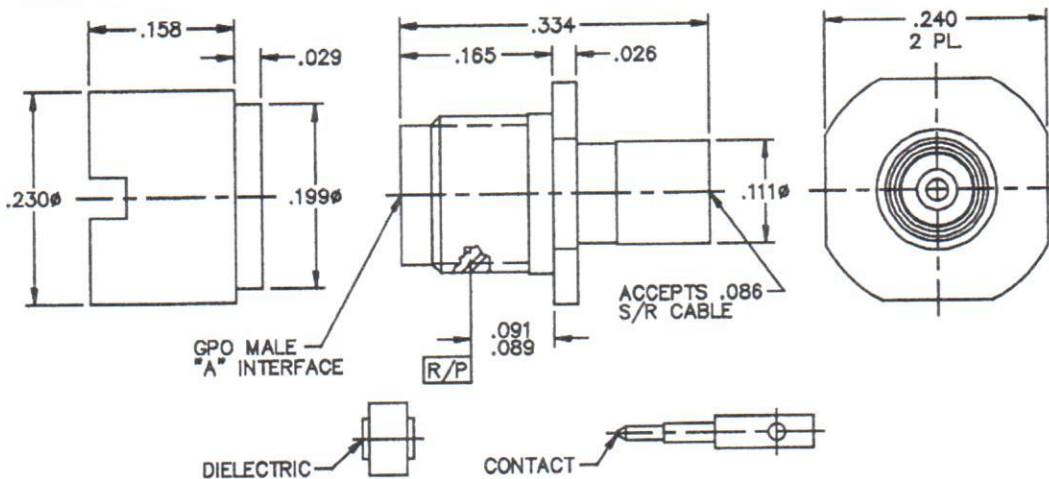
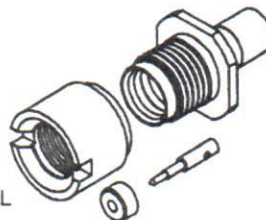
CATALOG NUMBER	"A" INTERFACE
A016-D93-02	FULL DETENT
A016-D94-02	LIMITED DETENT
A016-D96-02	CATCHERS MITT

**MATERIAL AND FINISH**

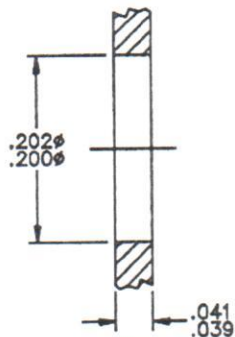
BULKHEAD AND FRONT NUT: CRES 303; PASSIVATED

CENTER CONTACT, AND CABLE ADAPTER: BeCu; GOLD PLATE 75 MICRINCHES TYPICAL  
OVER NICKEL PLATE 100 MICRINCHES TYPICAL

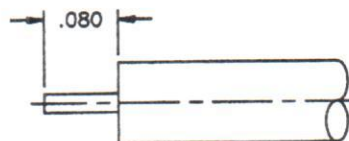
DIELECTRIC: POLYETHERIMIDE



**RECOMMENDED MOUNTING HOLE**



**CABLE PREPARATION**



This drawing and any data contained herein is the property of Corning Gilbert Inc., and constitutes and contains proprietary and confidential information. Neither receipt nor possession of this drawing confers or transfers any right to duplicate, use or disclose any information contained herein except as expressly authorized by Corning Gilbert Inc.

GPO MALE BULKHEAD  
MOUNT TO .086 S/R CABLE  
(TAB DETENT)

IDENT CODE:  
82316  
REVISION: B

**Corning Gilbert Inc.**

SOURCE FILE: MECR# 2575    DWG. NO.: OL-A016-D9X-02    ASSY. PROC.: AP01-123