

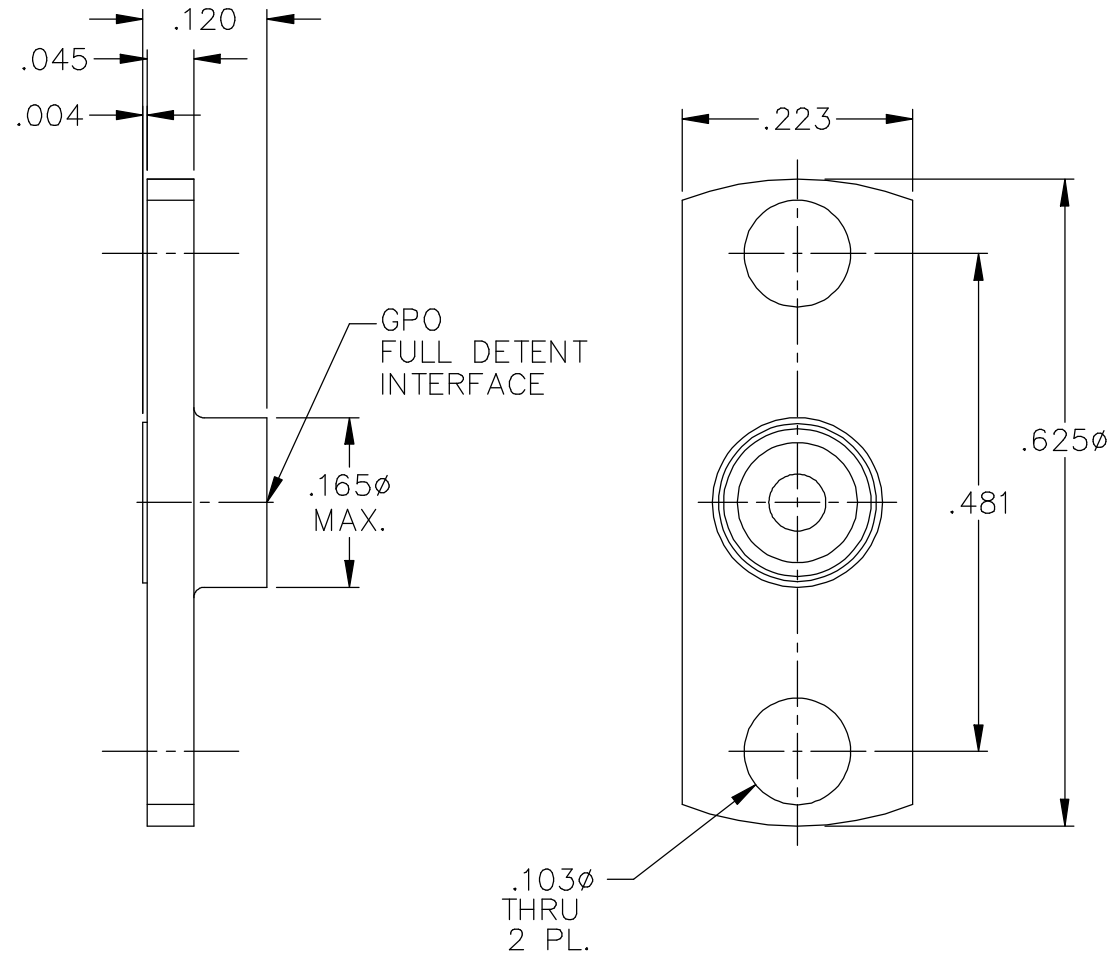
This drawing and any data contained therein is the property of Gilbert Engineering Co., Inc. and constitutes and contains proprietary and confidential information. Neither receipt nor possession of this drawing confers or transfers any right to duplicate, use, or disclose any information contained herein except as expressly authorized by Gilbert Engineering Co., Inc.

REV.	DESCRIPTION	DATE	APP'D.
C	SEE ECO GM-8509	7/24/98	

### MATERIAL AND FINISH

SHROUD:

CRES 303 PER ASTM A 484  
AND ASTM A 582 OR ASTM A 555  
AND ASTM A 581. PASSIVATE PER  
MIL-F-14072 E300.



ALL DIMENSIONS ARE IN INCHES

CAT. NO. 0119-948-3

CODE IDENT NO.  
82316

GILBERT ENGINEERING CO., INC.

BY		DATE	TITLE	
DRAWN: DEAN SINCLAIR		8-18-94	OUTLINE DRAWING FOR GPO FULL DETENT SHROUD (SMA HOLE PATTERN)	
ASSEMBLY PROCEDURES: NONE			DWG. NO.	REV
SOURCE FILE: MECR #552	SHT. 1	OF 1	OL-0119-948-3	C