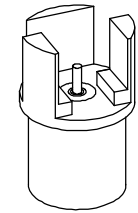
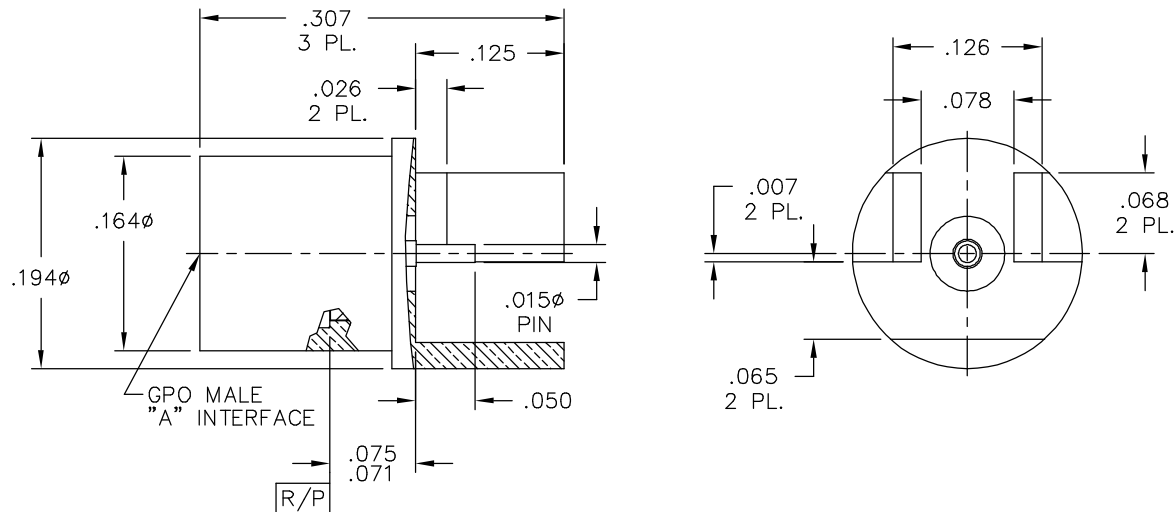


CATALOG NUMBER	"A" INTERFACE
A010-L33-02	FULL DETENT
A010-L34-02	LIMITED DETENT
A010-L35-02	SMOOTH BORE

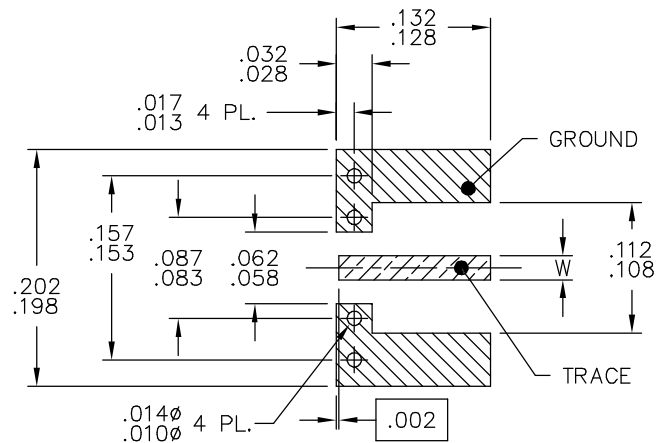


MATERIAL AND FINISH

SHROUD: CRES 303; PASSIVATED
 CENTER CONTACT AND SHELL: BeCu; GOLD PLATE 50-100 MICROINCHES OVER NICKEL PLATE 50 MICROINCHES MIN.
 DIELECTRICS: VIRGIN PTFE



RECOMMENDED MOUNTING FOOTPRINT



NOTES:

1. W REFERS TO THE LINE WIDTH APPROPRIATE FOR 50 OHMS ON THE DESIRED MICROSTRIP THICKNESS. MINIMUM W WIDTH IS .015.
2. PLATED HOLE DIAMETERS ARE SUGGESTED FOR .009 THICK LAYER.

This drawing and any data contained herein is the property of Corning Gilbert Inc., and constitutes and contains proprietary and confidential information. Neither receipt nor possession of this drawing confers or transfers any right to duplicate, use or disclose any information contained herein except as expressly authorized by Corning Gilbert Inc.

GPO MALE PCB EDGE MOUNT (TAB DETENT)	IDENT CODE: 82316	Corning Gilbert Inc.
	REVISION: A1	

SOURCE FILE: MECR# 2321	DWG. NO.: OL-A010-L3X-02	ASSY. PROC.: -
-------------------------	--------------------------	----------------