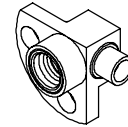


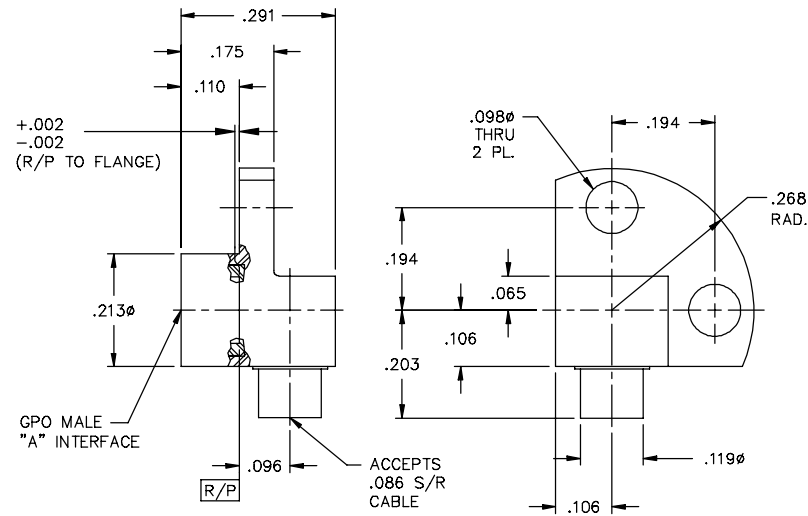
DATE REVISED: 7/26/01

CATALOG NUMBER	"A" INTERFACE
0119-727-3-FD	FULL DETENT
0119-727-3-LD	LIMITED DETENT
0119-727-3-SB	SMOOTH BORE



MATERIAL AND FINISH

SHROUD AND HOUSING: CRES 303; PASSIVATED
 CENTER CONTACT AND BUSHING: BeCu; GOLD PLATE 50-100 ? INCHES OVER NICKEL PLATE 50 ? INCHES MIN.
 DIELECTRICS: VIRGIN PTFE (TEFLON)



NOTE:
MIRROR IMAGE OF 0119-704-3-TAB

GPO MALE R/A TO .086 S/R CABLE (TAB DETENT)	IDENT CODE: 82316	GILBERT ENGINEERING
	REVISION: E	
SOURCE FILE: MECR# 758	DWG. NO.: OL-0119-727-3-TAB	ASSY. PROC.: AP01-038