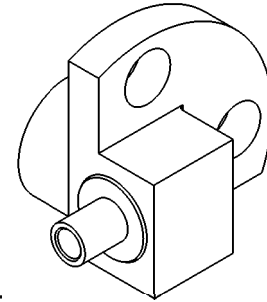


PROTOTYPE NUMBER	"A" INTERFACE
A015-B33-01	FULL DETENT
A015-B34-01	LIMITED DETENT
A015-B35-01	SMOOTH BORE

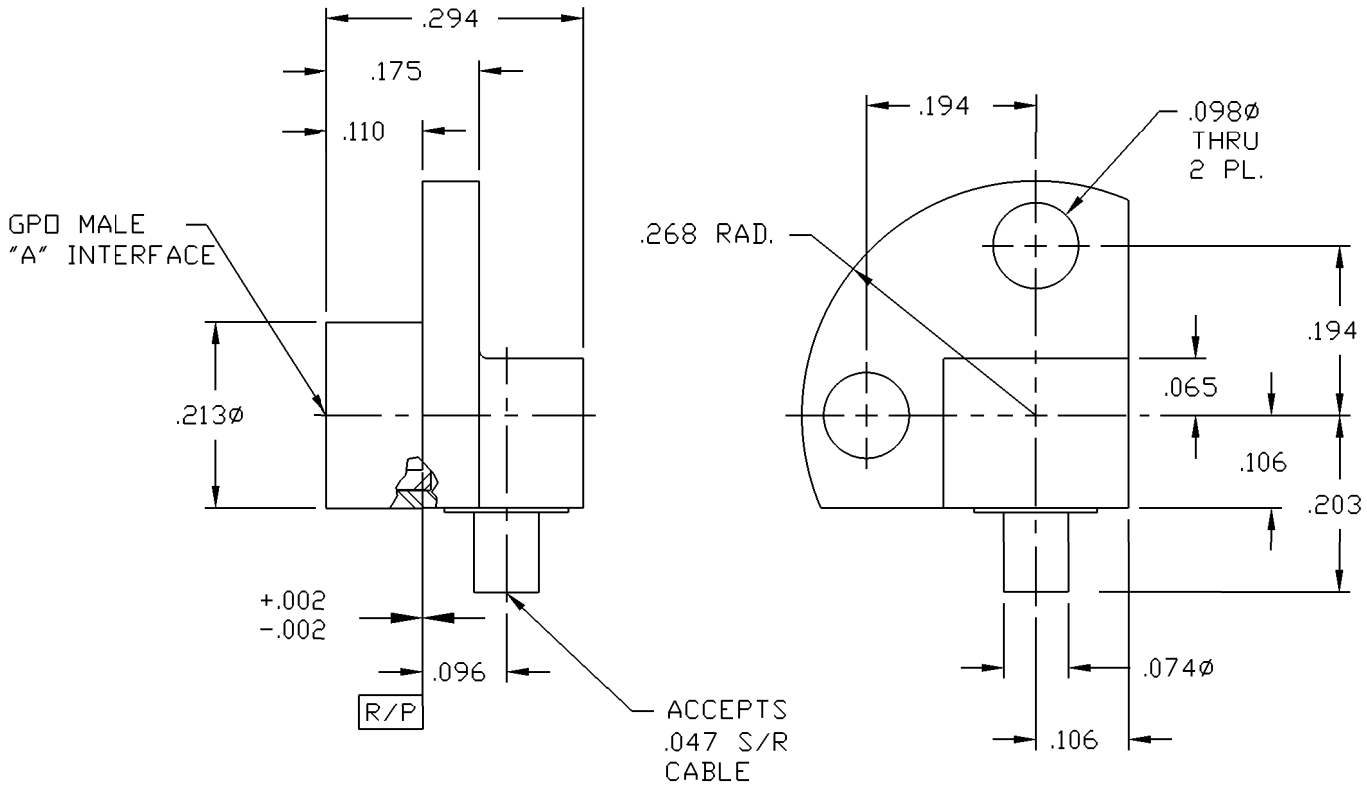


MATERIAL AND FINISH

SHROUD AND HOUSING: CRES 303; PASSIVATED

CENTER CONTACT AND CABLE ADAPTOR: BeCu; GOLD PLATE 75 MICRONDICES TYPICAL
OVER NICKEL PLATE 100 MICRONDICES TYPICAL.

DIELECTRICS: VIRGIN PTFE



This drawing and any data contained herein is the property of Corning Gilbert Inc., and constitutes and contains proprietary and confidential information. Neither receipt nor possession of this drawing confers or transfers any right to duplicate, use or disclose any information contained herein except as expressly authorized by Corning Gilbert Inc.

GPO MALE R/A
TO .047 S/R CABLE
(TAB DETENT)

IDENT CODE:
82316
REVISION: 01

Corning Gilbert Inc.

SOURCE FILE: SK-3679 DWG. NO.: 01-A015-B3X-01 ASSY. PROC.: AP01-167