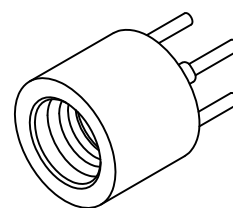


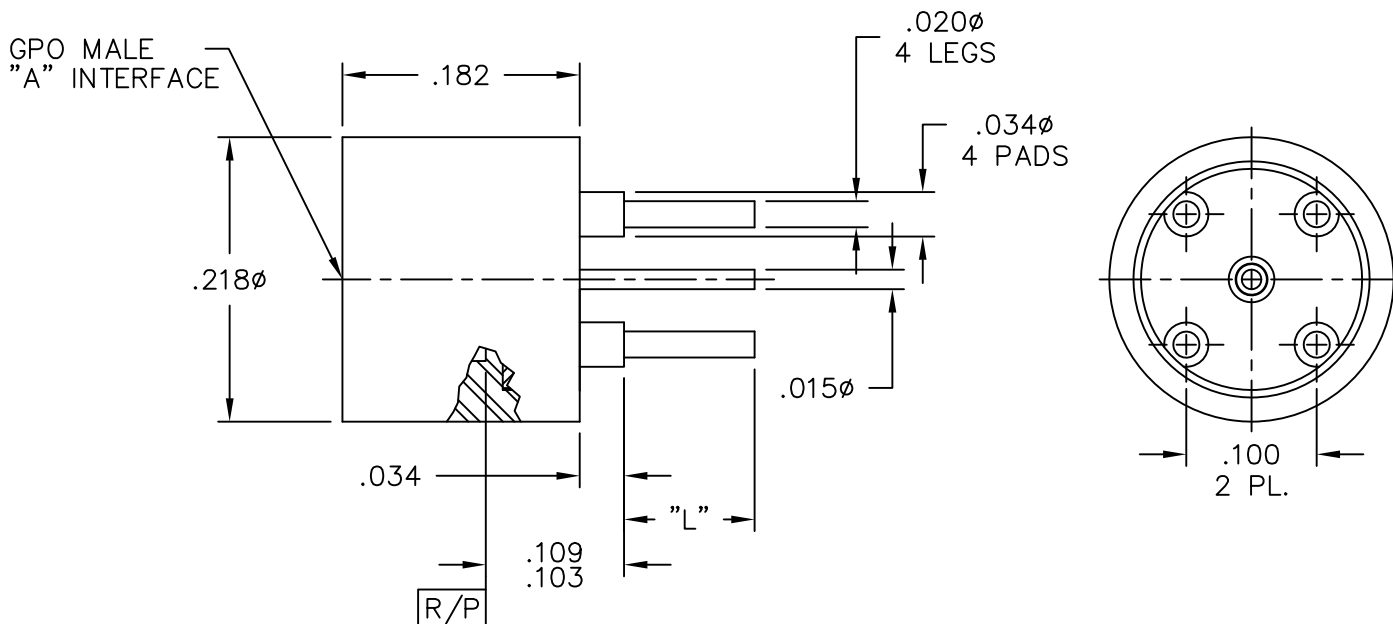
CATALOG NUMBER	"A" INTERFACE
0119-247-1-FD-TAB	FULL DETENT
0119-247-1-LD-TAB	LIMITED DETENT
0119-247-1-SB-TAB	SMOOTH BORE

'L'
(TAB=L' X 1000)
.055"
.100"

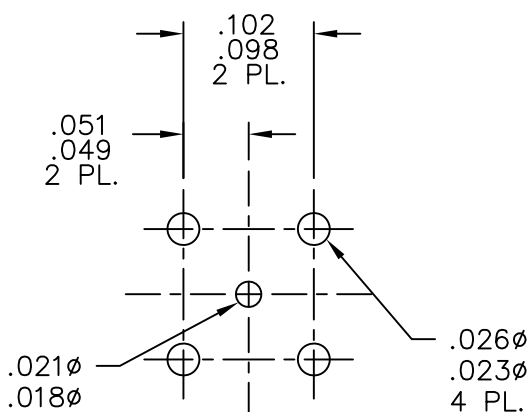


MATERIAL AND FINISH

SHROUD: CRES 303; PASSIVATED  
 CENTER CONTACT AND BUSHING: BeCu; GOLD PLATE 50-100 MICROINCHES OVER NICKEL PLATE 50 MICROINCHES MIN.  
 DIELECTRICS: VIRGIN PTFE (TEFLON)



MOUNTING HOLES AND PATTERN



This drawing and any data contained herein is the property of Corning Gilbert Inc., and constitutes and contains proprietary and confidential information. Neither receipt nor possession of this drawing confers or transfers any right to duplicate, use or disclose any information contained herein except as expressly authorized by Corning Gilbert Inc.

GPO MALE  
 TO P.C.B. MOUNT  
 (TAB DETENT)

IDENT CODE:

82316

REVISION: A1

Corning Gilbert Inc.

SOURCE FILE: SK-1738

DWG. NO.: OL-0119-247-1-TAB

ASSY. PROC.: -