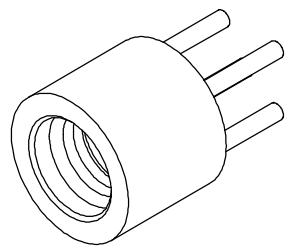
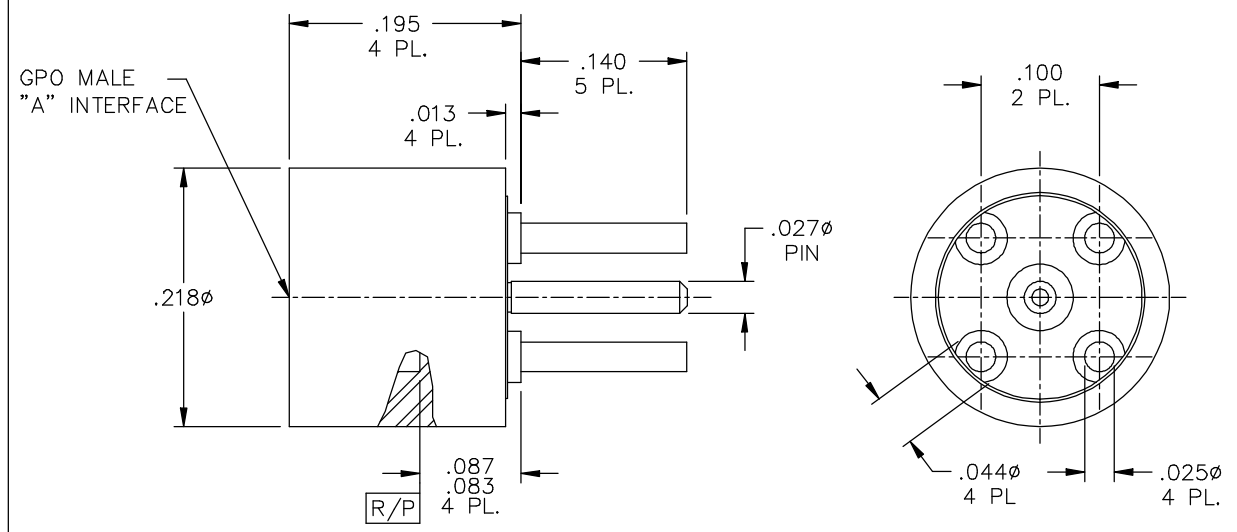


CATALOG NUMBER	"A" INTERFACE
A008-L33-02	FULL DETENT
A008-L34-02	LIMITED DETENT
A008-L35-02	SMOOTH BORE

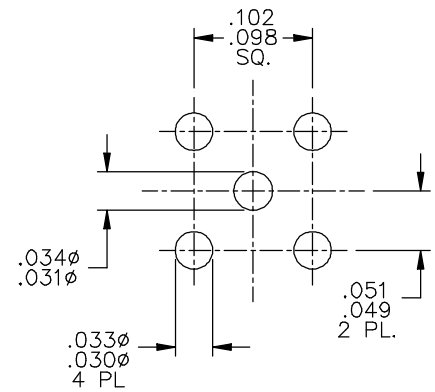


MATERIAL AND FINISH

HOUSING: CRES 303; PASSIVATED
 CENTER CONTACT AND BUSHING: BeCu; GOLD PLATE 50-100 MICROINCHES OVER NICKEL PLATE 50 MICROINCHES MIN.
 DIELECTRIC: VIRGIN PTFE



RECOMMENDED MOUNTING HOLE PATTERN



This drawing and any data contained herein is the property of Corning Gilbert Inc., and constitutes and contains proprietary and confidential information. Neither receipt nor possession of this drawing confers or transfers any right to duplicate, use or disclose any information contained herein except as expressly authorized by Corning Gilbert Inc.

GPO MALE STRAIGHT TO P.C. BOARD (TAB DETENT)	IDENT CODE: 82316	Corning Gilbert Inc.
	REVISION: F	

SOURCE FILE: MECR# 2373	DWG. NO.: OL-A008-L3X-02	ASSY. PROC.: -
-------------------------	--------------------------	----------------