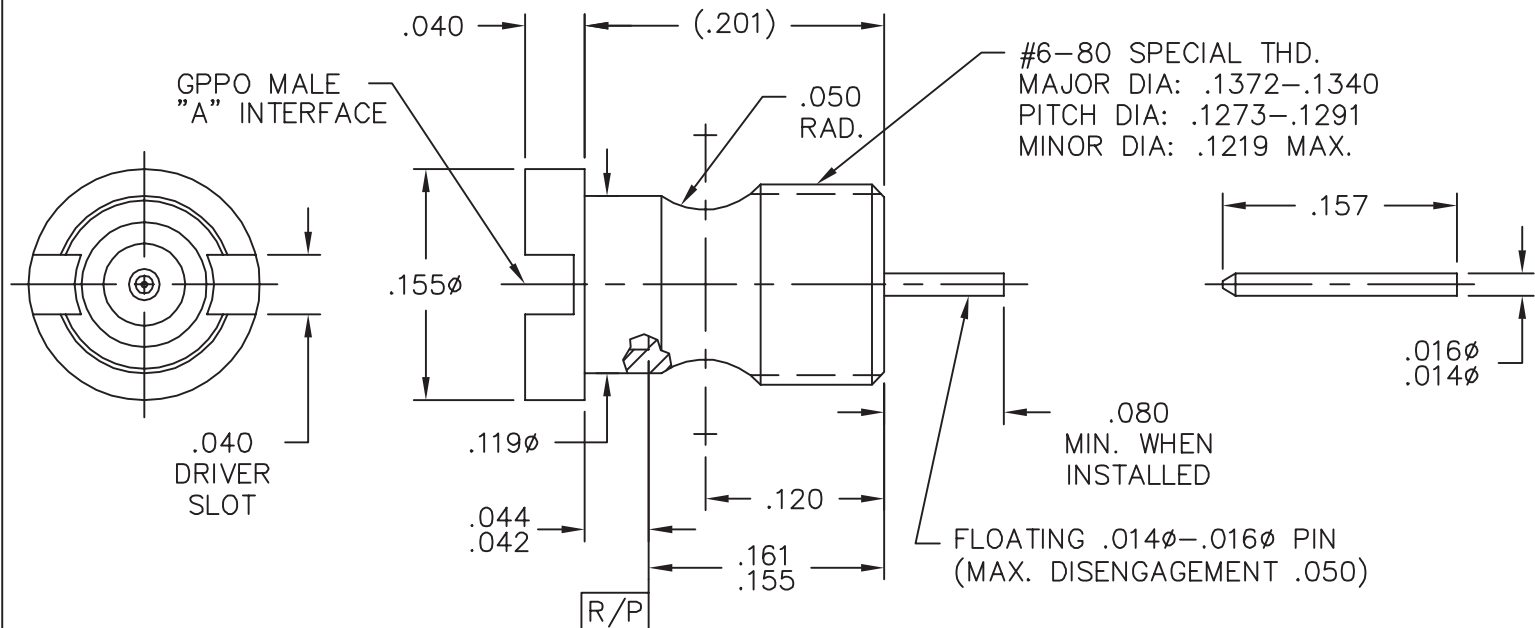
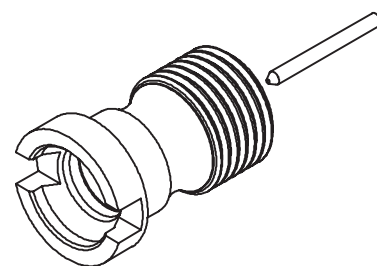


CATALOG NUMBER	"A" INTERFACE
B024-L33-01	FULL DETENT
B024-L35-01	SMOOTH BORE

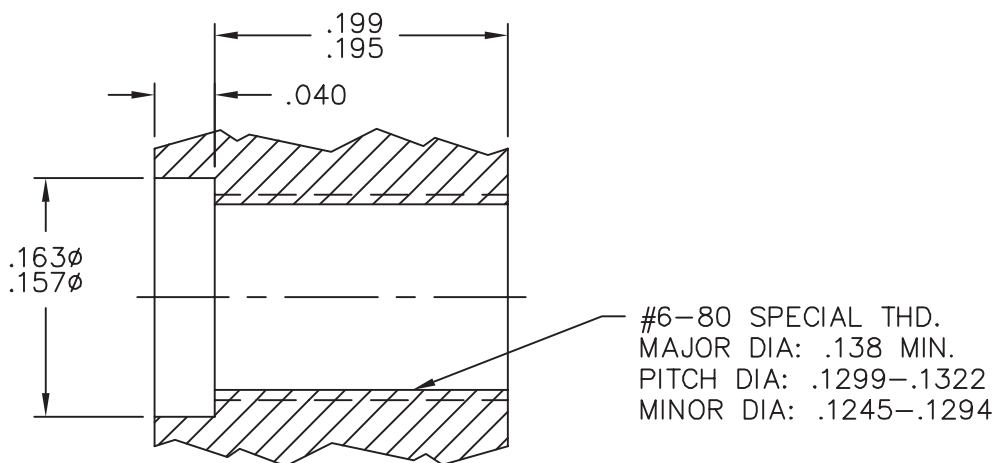
**B024-L33-01 is Identical to 0118-919-3**

**MATERIAL AND FINISH**

HOUSING AND BUSHING: CRES 303; PASSIVATED  
 PIN AND CONTACT: BeCu; GOLD PLATE 50-100 MICROINCHES OVER NICKEL PLATE 50 MICROINCHES MIN.  
 DIELECTRICS: VIRGIN PTFE



RECOMMENDED MOUNTING HOLE



This drawing and any data contained herein is the property of Corning Gilbert Inc., and constitutes and contains proprietary and confidential information. Neither receipt nor possession of this drawing confers or transfers any right to duplicate, use or disclose any information contained herein except as expressly authorized by Corning Gilbert Inc.

GPPO MALE THREAD-IN TO STRIPLINE LAUNCH WITH .015 $\phi$ PIN (TAB DETENT)	IDENT CODE: 82316	<b>Corning Gilbert Inc.</b>
	REVISION: G	

SOURCE FILE: MECR# 2331	DWG. NO.: OL-B024-L3X-01	ASSY. PROC.: -
-------------------------	--------------------------	----------------