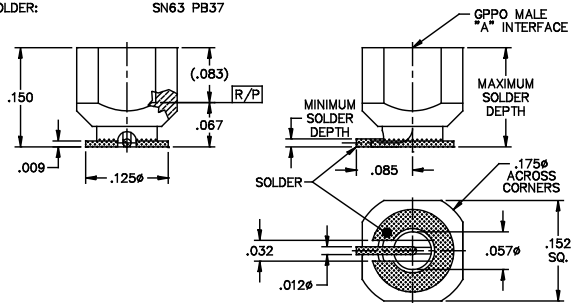
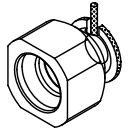


DATE REVISED: 2/17/11

CATALOG NUMBER	"A" INTERFACE
B112-P93-05-T	FULL DETENT
B112-P95-05-T	SMOOTH BORE

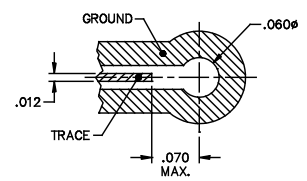
MATERIAL AND FINISH

CENTER CONTACT: BeCu; GOLD PLATE 75 MICROINCHES TYPICAL
 OVER NICKEL PLATE 100 MICROINCHES TYPICAL
 HOUSING: BRASS; GOLD PLATE 75 MICROINCHES TYPICAL
 OVER NICKEL PLATE 100 MICROINCHES TYPICAL
 DIELECTRIC: POLYAMIDE-IMIDE
 SOLDER: SN63 PB37



NOTES:
 1. TAPE AND REEL AVAILABLE UPON REQUEST.

RECOMMENDED FOOTPRINT



This drawing and any data contained herein is the property of Corning Gilbert Inc., and constitutes and contains proprietary and confidential information. Neither receipt nor possession of this drawing confers or transfers any right to duplicate, use or disclose any information contained herein except as expressly authorized by Corning Gilbert Inc.

GPPO MALE (TAB DETENT) SURFACE MOUNT SOLDER DIPPED		IDENT CODE: 82316	Corning Gilbert Inc.
		REVISION: A	
SOURCE FILE: SK-4056	DWG. NO.: OL-B112-P9X-05-T	ASSY. PROC.: —	