

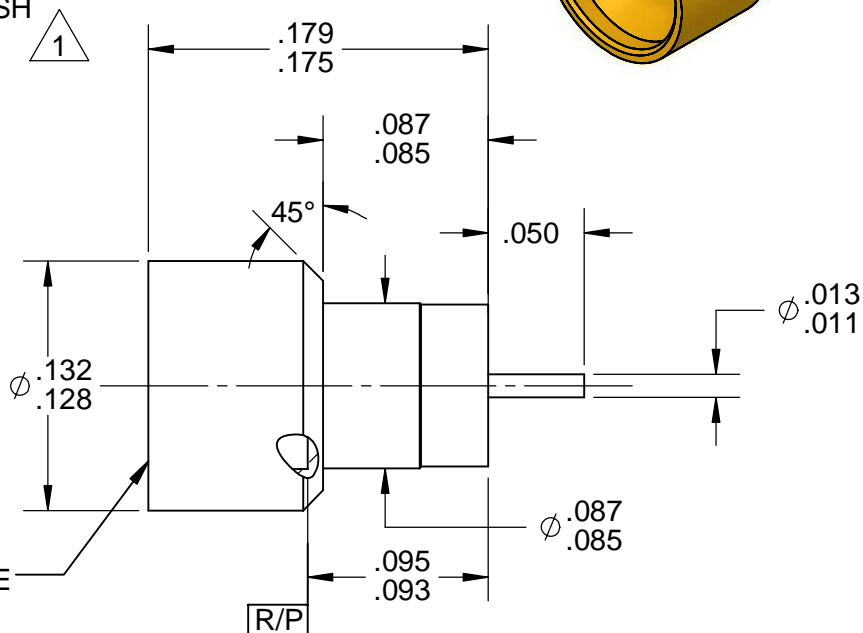
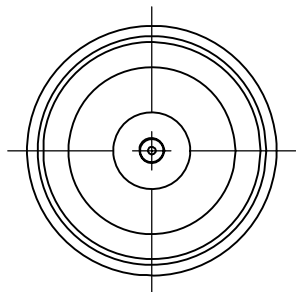
CATALOG NUMBER	"A" INTERFACE
B026-L93-01	FULL DETENT
B026-L95-01	SMOOTH BORE



MATERIAL AND FINISH

HOUSING, PIN, AND BUSHING: BeCu; GOLD PLATE 75 MICROINCHES TYPICAL OVER COPPER FLASH

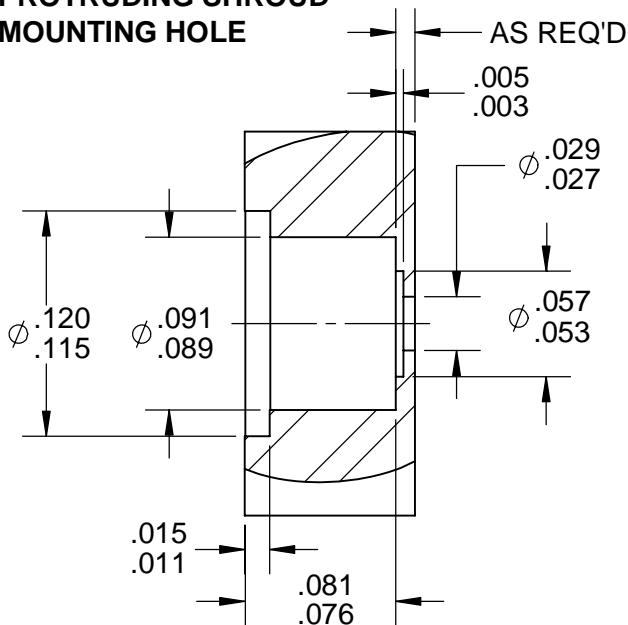
DIELECTRIC: VIRGIN PTFE



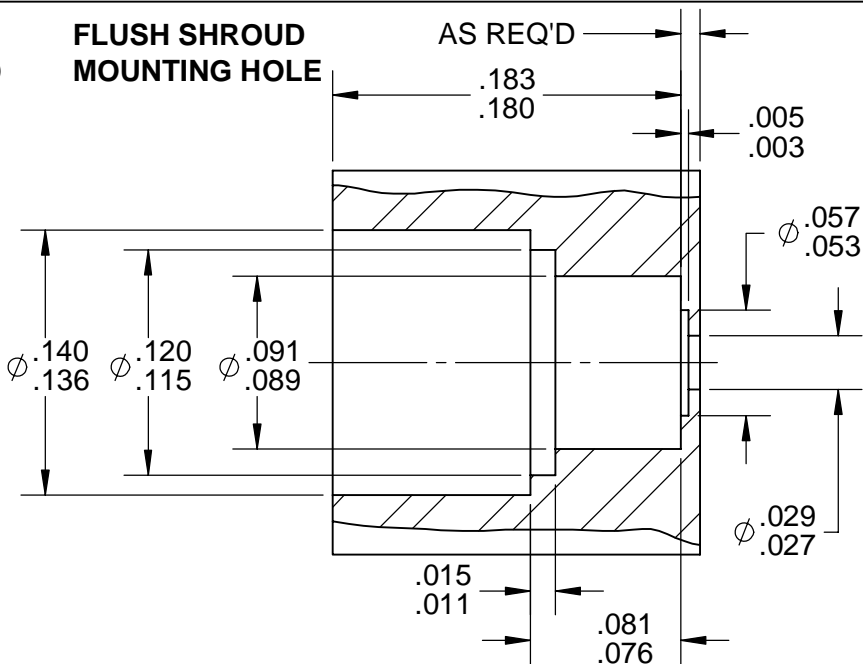
NOTES:

1 NON-MAGNETIC PLATING. THIS CONNECTOR IS NOT TO BE USED IN STANDARD APPLICATIONS.

PROTRUDING SHROUD MOUNTING HOLE



FLUSH SHROUD MOUNTING HOLE



CORNING RESTRICTED - This drawing and any data contained herein is the proprietary and confidential information of Corning. Neither receipt nor possession of this drawing provides any right to duplicate, use, or disclose any information contained herein except with the express written consent of Corning.
 EXPORT CONTROL - This document contains information within the purview of the Export Administration Regulations (EAR), 15 CFR 730-774, and may be export controlled.

APPROX. WEIGHT: 0.1310 grams	SIGNATURES	INIT	DATE:
TOLERANCE:	DRAWN: MV		06/10/16
.XX ±.010 .XXX ±.005 ANGULAR ±5°	CHECKED: DMG		
	APPROVED: TEF		

**GPPO MALE SOLDER-IN,
NON-MAGNETIC (TAB
DETENT)**

CAGE CODE: 82316
SCALE: 10:1
REVISION: 02

CORNING

PLANT OF ORIGIN
CORNING PHOENIX
PLANT: (623)245-1050
CUSTOMER SERVICE:
(800) 651-8869

SOURCE FILE: SK-5783	DWG. NO.: OL-B026-L9X-01	ASSY. PROC.: -
----------------------	--------------------------	----------------