

# JF SERIES CONFIGURATOR 1 5

REV	DESCRIPTION	BY DATE	APPD
R	REVISED SHEET 1 TABLE PER ER21332	01/21/10	V.B.H. PSM

SEE SHEET 3 FOR NOTES

FOR SELECTIVE LOADING AND OTHER VARIATIONS  
THE LAST FOUR POSITIONS ARE REPLACED BY  
A FACTORY ASSIGNED DEVIATION NUMBER AS REQUIRED.

**STEP 1** SERIES CODE  
JF SERIES MINIATURE SIDE MOUNT CONNECTORS

**STEP 2** PRIMARY CONTACTS

* CODE	DESCRIPTION
1	Primary Contact Loaded Per <b>STEP 7</b>
2	Primary Contacts Loaded Per <b>STEP 7</b>
3	Primary Contacts Loaded Per <b>STEP 7</b>
4	Primary Contacts Loaded Per <b>STEP 7</b> (4 Position IN-LINE configuration only)

**STEP 3** PRIMARY CONTACT AND MOLDING TYPE

CODE	CONTACT AND MOLD DESCRIPTION
P	Pin
S	Socket

**STEP 4** SECONDARY CONTACTS

CODE	DESCRIPTION
1	Secondary Contact Loaded Per <b>STEP 7</b>
2	Secondary Contacts Loaded Per <b>STEP 7</b>
3	Secondary Contacts Loaded Per <b>STEP 7</b>
NONE	Secondary Contacts Loaded Per <b>STEP 7</b>

**STEP 5** SECONDARY CONTACT TYPE DESIGNATION

CODE	DESCRIPTION
P	Pin See <b>STEP 7</b> For Location
S	Socket See <b>STEP 7</b> For Location
NONE	See <b>STEP 7</b> For Location Applicable to JF4 Type only. For JF4P Secondary Type = Socket For JF4S Secondary Type = Pin


**STEP 9** DIP SOLDER CONTACT DESIGNATION (SEE SHEET 2)

**STEP 8** VARIATIONS (SEE SHEET 2)

**STEP 7** PRIMARY CONTACT DESIGNATION (SEE SHEET 2)  
(PRIMARY AND SECONDARY CONTACT LOCATIONS)

**STEP 6** CONTACT & PLATING DESIGNATION

CODE TYPES		DIP SOLDER TAIL FINISHES SEE <b>STEP 9</b>	SOLDER CUP & DIP SOLDER CONTACT MATERIAL		SOLDER CUP TERMINATION		
JF2P JF2P2P JF4P	JF*P*S JF*S*P JF*S		SOCKET	PIN	FINISH	SOLDER CUP TERMINATION	SOCKET CONTACT ENTRY OPTION
NONE	NONE	N/A	Phos Bronze C54400	Brass C36000	8μ In. Gold over NI.	Not Filled	Open
N/A	10	N/A	Phos Bronze C51000		50μ In. Gold over NI.	Filled	Closed
11	11	N/A	Phos Bronze C54400		50μ In. Gold over NI.	Filled	Open
N/A	12	N/A	Berylium Cu C17300		50μ In. Gold over NI.	Not Filled	Closed
N/A	27	N/A	Berylium Cu C17300		8μ In. Gold over NI.	Not Filled	Closed
30	30	N/A	Phos Bronze C51000		30μ In. Gold over NI.	Not Filled	Open
N/A	32	8μ In. Gold over NI.	Phos Bronze C51000		8μ In. Gold over NI.	Not Filled	Closed
34	34	100μ In. Gold over NI.	Phos Bronze C51000		100μ In. Gold over NI.	Not Filled	Closed
N/A	45	50μ In. Gold over NI.	Phos Bronze C51000		50μ In. Gold over NI.	Not Filled	Closed
81	81	N/A	Phos Bronze C54400		100μ In. Gold over NI.	Not Filled	Open
95	95	N/A	Phos Bronze C54400		50μ In. Gold over NI.	Not Filled	Open
N/A	112	N/A	Phos Bronze C54400		30μ In. Gold over NI.	Not Filled	Open
N/A	113	N/A	Phos Bronze C54400	Brass C36000	50μ In. Gold over NI.	Not Filled	Open

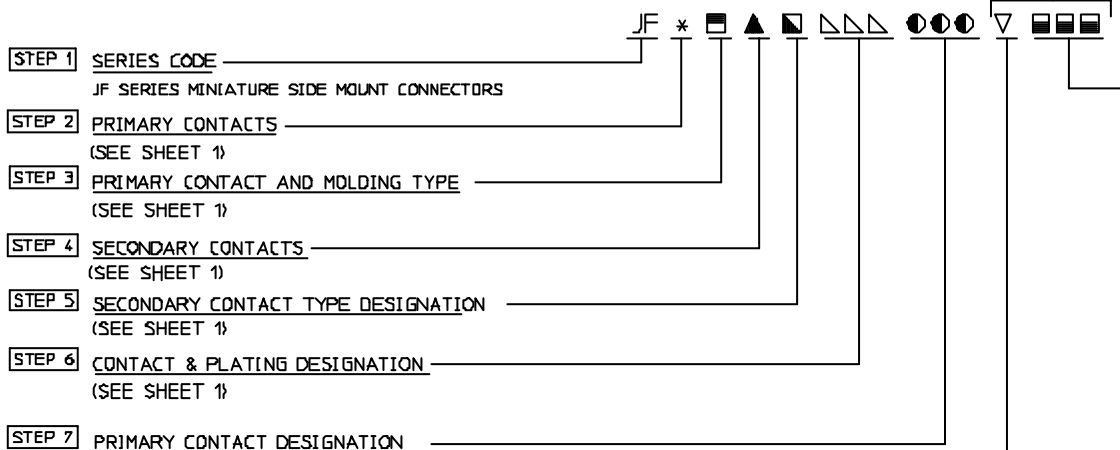
UNLESS OTHERWISE SPECIFIED: DIMENSIONS ARE IN INCHES, OR INCHES / MM		 <b>WINCHESTER ELECTRONICS</b> Winchester Electronics Corporation 62 Barnes Industrial Road North Wallingford, Connecticut 06492	
TOLERANCES	MM		
DECIMALS	.xx ±02/0.5 .xxx ±07/0.18	ANGLES :	SCALE: N/A
<b>CUSTOMER DRAWING</b>		<b>TITLE</b> JF SERIES, SIDE MOUNTING, 4 POS. RECTANGULAR, 30/4 IROS. IN-LINE & 2 POS IN-LINE	
DRAWN	DATE CHECKED	DATE	
BONESSI 01/09/95	R.M. BRADLEY 2/21/95		
APPROVED	DATE APPROVED	DATE	
V.B. HARRIS 2/21/95	D. REMILLARD 3/1/95		
©		19560	SHT. 1 OF 5

REV	DESCRIPTION	DATE	APPD
R	REVISED PER ER21332	01/21/95	PSM

# JF SERIES CONFIGURATOR 1 5

SEE SHEET 3 FOR NOTES

FOR SELECTIVE LOADING AND OTHER VARIATIONS THE LAST FOUR POSITIONS ARE REPLACED BY A FACTORY ASSIGNED DEVIATION NUMBER AS REQUIRED



- STEP 1** SERIES CODE \_\_\_\_\_  
JF SERIES MINIATURE SIDE MOUNT CONNECTORS
- STEP 2** PRIMARY CONTACTS \_\_\_\_\_  
(SEE SHEET 1)
- STEP 3** PRIMARY CONTACT AND MOLDING TYPE \_\_\_\_\_  
(SEE SHEET 1)
- STEP 4** SECONDARY CONTACTS \_\_\_\_\_  
(SEE SHEET 1)
- STEP 5** SECONDARY CONTACT TYPE DESIGNATION \_\_\_\_\_  
(SEE SHEET 1)
- STEP 6** CONTACT & PLATING DESIGNATION \_\_\_\_\_  
(SEE SHEET 1)
- STEP 7** PRIMARY CONTACT DESIGNATION \_\_\_\_\_  
(PRIMARY AND SECONDARY CONTACT LOCATIONS)

**STEP 9** DIP SOLDER CONTACT DESIGNATION  
FOR PLATING CODES & MATERIAL, SEE **STEP 6**

DIP SOLDER CODE	DIP SOLDER LENGTH D
D2	2/32
D3	3/32
D4	4/32
D5	5/32
D6	6/32
D11	11/32
D12	12/32
D13	13/32

**STEP 8** VARIATIONS

▽ CODE	DESCRIPTION
D	No Contact ID Required on Molding Replace Standard Molding with Molding Without Contact ID.
R	"Reverse Molding". Replace Standard Molding Required with "Reverse" Molding.

CODE PRIMARY CONTACT LOCATION DESIGNATION	QUANTITY OF PRIMARY CONTACTS	LOCATION OF SECONDARY CONTACTS	QUANTITY OF SECONDARY CONTACTS	LOADING OPTIONS USED ON
Blank (No Designation Used) All Positions Loaded	4	None	0	JF4P or JF4S, 4 Position In-Line, And JF2P2P or JF2S2S 4 Position Rectangular
A	1	B	1	2 Position In-Line Only
B	1	A	1	
A	1	BCD	3	JF*P▲S△D△D○○○○ or JF*S▲P△D△D○○○○ 4 Position Rectangular and JF4P△D△D○○○○ or JF4S△D△D○○○○ 4 Position In-Line
B	1	ACD	3	
C	1	ABD	3	
D	1	ABC	3	
AB	2	CD	2	
AC	2	BD	2	
AD	2	BC	2	
BC	2	AD	2	
BD	2	AC	2	
CD	2	AB	2	
ABC	3	D	1	
ABD	3	C	1	
BCD	3	A	1	
ACD	3	B	1	

UNLESS OTHERWISE SPECIFIED DIMENSIONS ARE IN INCHES OR DECIMALS / MM		<p>Winchester Electronics Corporation 62 Barnes Industrial Road North Wallingford, Connecticut 06492</p>
ORIGINALS: XX 202/05 ANGLES: XXX 207/0 18 SCALE: N/A	<b>CUSTOMER DRAWING</b>	
BUSINESS: 01/08/95 RM BRADLEY 2/21/95 APPROVED: 2/21/95 D RENOILLARD 3/1/95		TITLE: JF SERIES, SIDE MOUNTING, 4 PDS RECTANGULAR, 4 PGS. IN-LINE & 2 PDS IN-LINE
REFORMATTED BY FEH 01/08/95		19560 of 2 of 5 REV R

REV	DESCRIPTION	BY	APPD
R	REVISED PER ER21332	PSM 01/22/10	VJB

### SPECIFICATIONS

#### MATERIALS

Moldings (Pin & Socket) ——— Diallyl Orthophthalate  
Color: Grey

Pin contacts ——— Brass

Socket contacts ——— See Configurator

#### PERFORMANCE CHARACTERISTICS

Dielectric withstanding voltage (at sea level) ——— 1500 VAC

Current rating ——— 7.5 AMPS

Operating temperature range ——— -55°C to +125°C

Termination Type ——— .048 solder cup to accept #20 AWG stranded wire

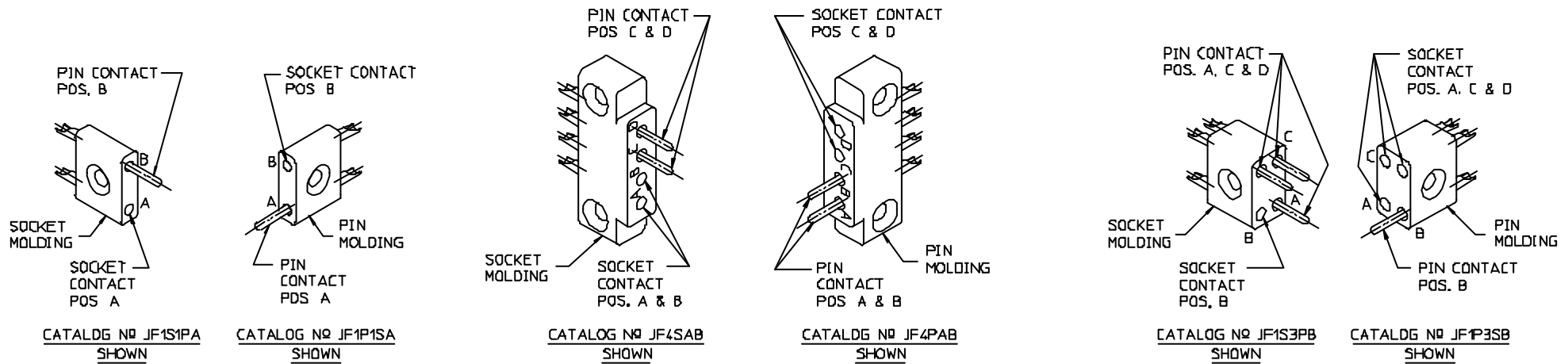
.0025 dia solder pin

### NOTES: UNLESS OTHERWISE SPECIFIED

- 1 CATALOG NUMBER CODE: **5**
- 2 FOR THE 4 POSITION RECTANGULAR CONNECTOR STYLE FULLY LOADED WITH ONE CONTACT TYPE, BOTH PRIMARY AND SECONDARY CONTACT TYPE DESIGNATIONS ARE FILLED IN (JF2P2P1111 OR JF2S2S1111) AND NO PRIMARY AND SECONDARY CONTACT LOCATION CODE **000** **STEP 7** IS REQUIRED.
- 3 JF4P OR JF4S DENOTES ONLY THE 4 POSITION IN-LINE CONNECTOR STYLE LOADED PER **STEP 7** THIS DESIGNATION IS NOT TO BE USED FOR THE 4 POSITION RECTANGULAR STYLE.
- 4 THIS DESIGNATION DETERMINES THE TYPE OF MOLDING USED AND THE TYPE OF PRIMARY CONTACTS TO BE INSTALLED.
- 5 CONSULT SALES FOR CONNECTOR VARIATIONS NOT LISTED

### TYPICAL CONNECTOR ASSEMBLIES

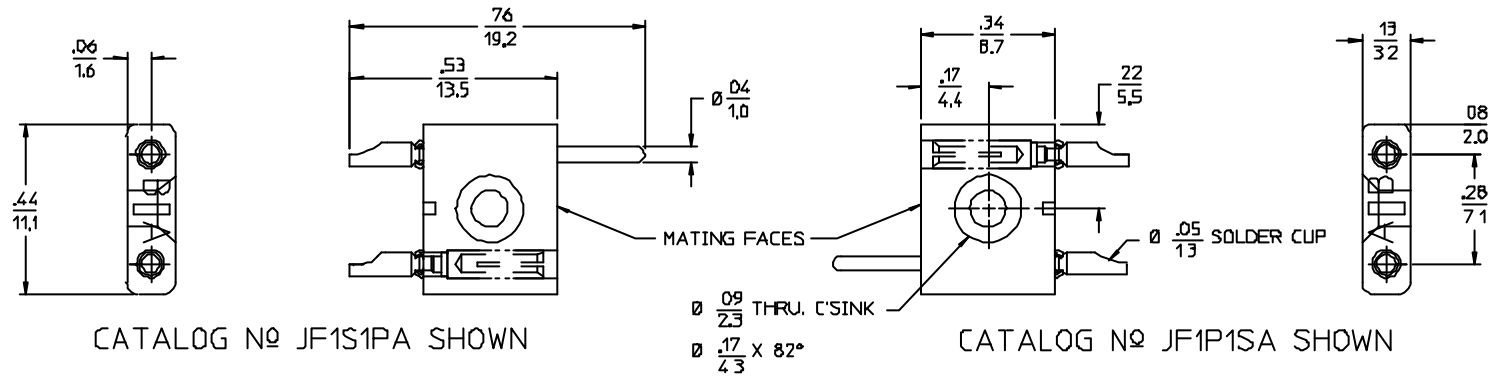
FOR OTHER VARIATIONS, SEE CONFIGURATOR, SHEETS 1 & 2



UNLESS OTHERWISE SPECIFIED DIMENSIONS ARE IN INCHES OR INCHES / MM		 <b>WINCHESTER ELECTRONICS</b> Winchester Electronics Corporation 62 Barnes Industrial Road North Wallingford, Connecticut 06492
DECIMALS	xx ± 0.2/0.5 xxx ± 0.07/0.18	
TOLERANCES	MM	<b>CUSTOMER DRAWING</b>  TITLE <b>JF SERIES, SIDE MOUNTING, 4 POS RECTANGULAR, 4 POS, IN-LINE &amp; 2 POS, IN-LINE</b>
ANGLES	SCALE: 2:1	
DRAWN	DATE	DATE
BONESSI	01/08/93	RM BRADLEY
APPROVED	DATE	DATE
V.J.B. HARRIS	2/21/95	D. REHILLARD
19560		REV 3 of 5
R		R

REFORMATTED BY PEH 06/06/18

REV	DESCRIPTION	BY	APPD
R	REVISED PER ER21332	PSM 01/27/10	V.B.H.

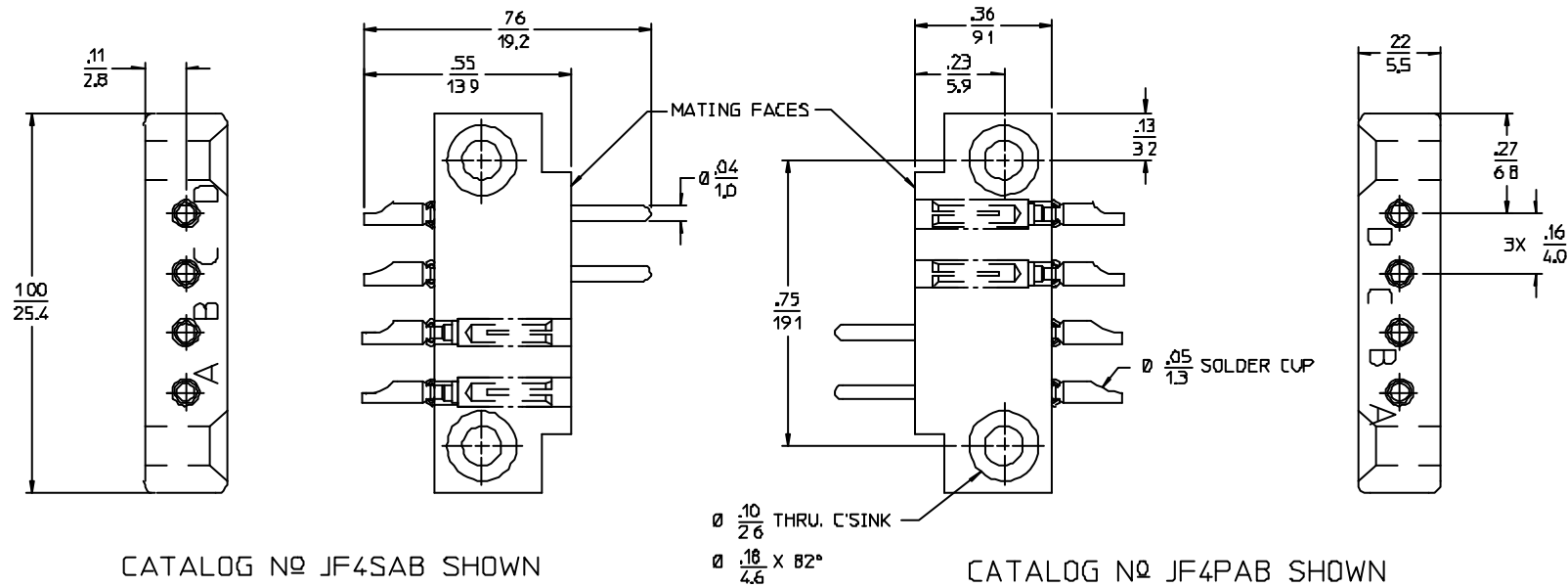


CATALOG NO JF1S1PA SHOWN

CATALOG NO JF1P1SA SHOWN

JF SERIES, PIN AND SOCKET, 2 POSITION IN-LINE CONNECTORS

FOR OTHER VARIATIONS, SEE CONFIGURATOR, SHEETS 1 & 2 [5]  
 DIMENSIONS SHOWN ARE TYPICAL FOR ALL STANDARD 2 POS. IN-LINE CONNECTORS



CATALOG NO JF4SAB SHOWN

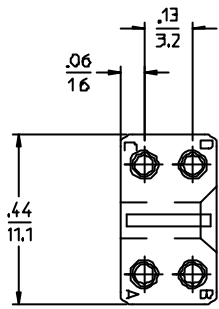
CATALOG NO JF4PAB SHOWN

JF SERIES, PIN AND SOCKET, 4 POSITION IN-LINE CONNECTORS

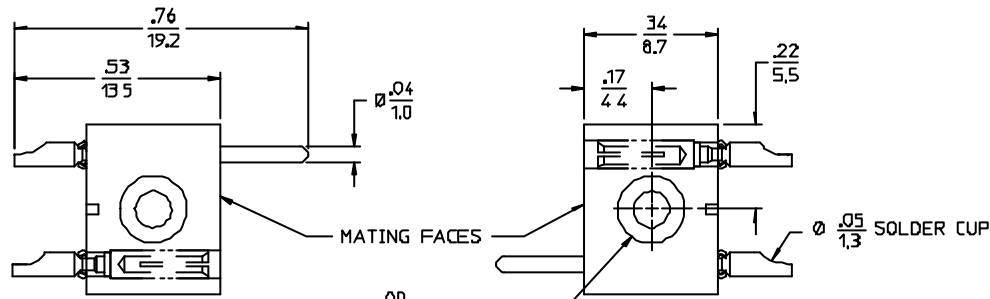
FOR OTHER VARIATIONS, SEE CONFIGURATOR, SHEETS 1 & 2 [5]  
 DIMENSIONS SHOWN ARE TYPICAL FOR ALL STANDARD 4 POS IN-LINE CONNECTORS

PER ANSI Y14.5M-1982 UNLESS OTHERWISE SPECIFIED DIMENSIONS ARE IN INCHES OR MILLIMETERS TOLERANCES: DECIMALS: .XX ± 0.02 / 0.5; .XXX ± 0.007 / 0.18 ANGLES: °; DECIMALS: .XX ± 0.015; .XXX ± 0.007 / 0.18 UNLESS OTHERWISE SPECIFIED		<p>Winchester Electronics Corporation          62 Barnes Industrial Road North          Wallingford, Connecticut 06492</p>
<b>CUSTOMER DRAWING</b>		
DRAWN: BONASSE 01/09/95 APPROVED: V.B. HARRIS 2/21/95	CHECKED: RM BRADLEY 2/21/95 APPROVED: D. RENVILLARD 3/1/05	TITLE: JF SERIES, SIDE MOUNTING, 4 POS RECTANGULAR, 4 POS. IN-LINE & 2 POS IN-LINE PART NO: 19560 REV: 4 OF 5

REV	DESCRIPTION	BY	DATE	APPRO
R	REVISED PER ER21332	PSM	01/21/90	V.B.H.

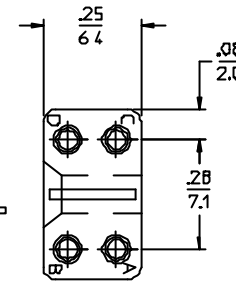


CATALOG NO JF2S2PAB SHOWN



Ø .09 / 2.3 THRU, C'SINK  
Ø .17 x 82° / 4.3

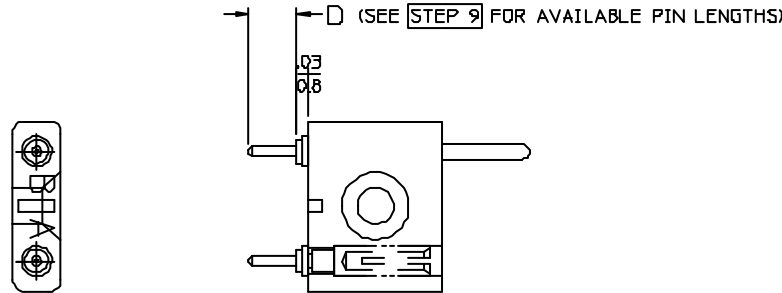
CATALOG NO JF2P2SAB SHOWN



### JF SERIES, PIN AND SOCKET, 4 POSITION RECTANGULAR CONNECTORS

FOR OTHER VARIATIONS, SEE CONFIGURATOR, SHEETS 1 & 2 [5]

DIMENSIONS SHOWN ARE TYPICAL FOR ALL STANDARD 4 POS RECTANGULAR CONNECTORS



CATALOG NO JF1S1PD4 SHOWN

### TYPICAL JF SERIES CONNECTOR WITH DIP SOLDER TERMINATION

FOR OTHER VARIATIONS, SEE CONFIGURATOR, SHEETS 1 & 2 [5]

DIMENSIONS FOR ALL JF SERIES CONNECTORS WITH DIP SOLDER TERMINATIONS ARE IDENTICAL TO JF SERIES CONNECTORS WITH SOLDER CUP TERMINATIONS EXCEPT FOR DIMENSION SHOWN.

PER ANSI Y14.5M-1982 UNLESS OTHERWISE SPECIFIED DIMENSIONS ARE IN INCHES OR INCHES / MM TOLERANCES DECIMALS xx ± 0.2 / 0.5 ANGLES xxx ± 0.07 / 0.18 ANGLES c SCALB 41		<p>Winchester Electronics Corporation 62 Barnes Industrial Road North Wallingford, Connecticut 06492</p>
<b>CUSTOMER DRAWING</b>		
DRAWN BONESS 01/09/95	DATE CHECKED RM BRADLEY 2/21/95	TITLE JF SERIES, SIDE MOUNTING, 4 POS RECTANGULAR, 4 POS, IN-LINE & 2 POS, IN-LINE
APPROVED V.B. HARRIS 2/21/95	DATE APPROVED D. REMILLARD 3/1/95	19560 OF 5 OF 5 REV R