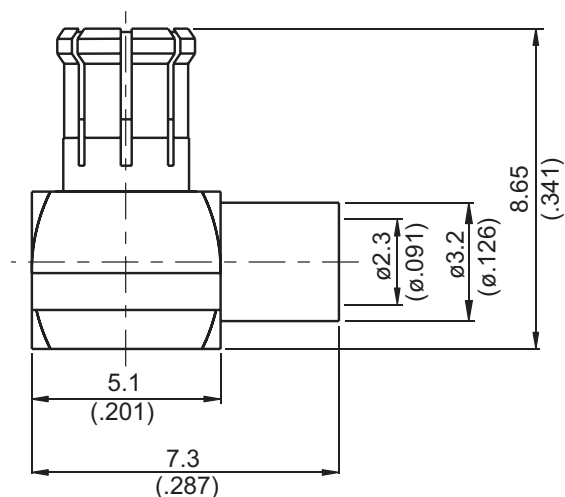


MCX3300-9085

MCX Plug Solder Right Angle 50Ω



| Parts | Material | Plating (Micro-inch) |
|-------------|-----------------|---------------------------------------|
| Contact Pin | Brass | Gold 20 Over Nickel 50 Over Copper 50 |
| Cover | Brass | Gold 5 Over Nickel 50 Over Copper 50 |
| Insulator | Teflon | |
| Body | Phosphor Bronze | Gold 5 Over Nickel 50 Over Copper 50 |

Weight: 0.88 g

Suitable Cables: Semi-rigid.085

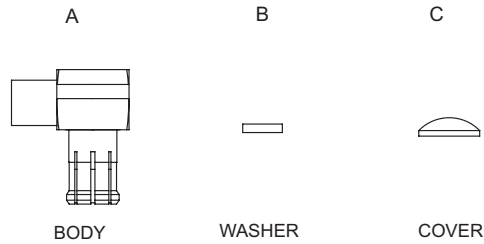
This part number complies with RoHS.

Notice: JYEBAO reserves the right to make modifications deemed appropriate.

CABLE ASSEMBLY INSTRUCTION

MCX3300-9085

JYE BAO CO., LTD.



*TOOLS AND FIXTURES ARE REFERENCE ON
PAGE 306 OF JYEBAO'S 2005 CATALOG.

| DIAGRAM | ASSEMBLY INSTRUCTION |
|---------|--|
| | <p>Step1: STRIP AS SHOWN.</p> |
| | <p>Step2: SLIDE CENTER CONDUCTOR ON THE CONTACT PIN OF CONNECTOR "A", AND SOLDER IN "Y".</p> |
| | <p>Step3: INSERT PREPARED CABLE INTO CONNECTOR BODY "A" AND USE SOLDERING FIXTURE "ST-008", INSERT TOOL "ST-009" AND LOCATOR TOOL "ST-011M" TO FIX THE CONNECTOR. SOLDER IN "X".</p> |
| | <p>Step4: PRESS ON THE TOP OF "B" AND "C" WITH JIGS.</p> |

This part number complies with RoHS.

Notice: JYEBAO reserves the right to make modifications deemed appropriate.