

# ENVELOPE / ASSEMBLY DRAWING

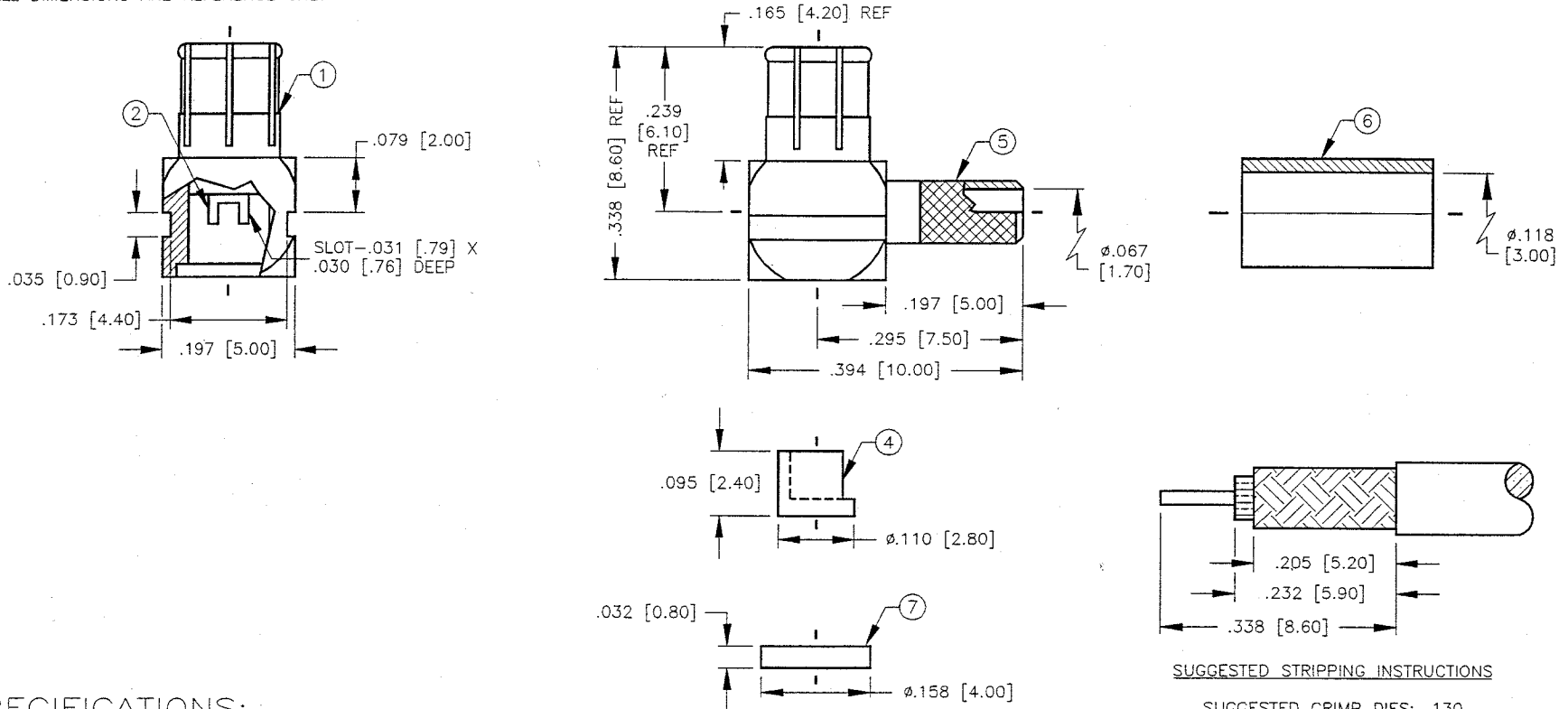
008974

## SPECIFICATION CONTROL DRAWING

THIS DRAWING CONTAINS INFORMATION PROPRIETARY TO RF INDUSTRIES, LTD. ANY UNAUTHORIZED USE OF THIS DRAWING IS EXPRESSLY PROHIBITED. ANY VIOLATION IS PUNISHABLE UNDER U.S. COPYRIGHT LAWS.

REV	DESCRIPTION	DWN	DATE	APPROVED
A	ENGINEERING RELEASE	CZS	11/11/97	R. RICE
B	WAS RFX-8010-1B	CZS	6/3/99	R. RICE

ALL DIMENSIONS ARE REFERENCE ONLY



### SPECIFICATIONS:

IMPEDANCE: 50 OHMS  
 WORKING VOLTAGE: 335 VRMS @ SEA LEVEL  
 FREQUENCY RANGE: 0-6 GHz  
 INSERTION LOSS: ≤ .1 dB MAX/1 GHz  
 VSWR: 1.5 MAX @ 6 GHz  
 FOR RG-174, 188, 188A, 316/U, ALPHA 9174, 9316,  
 BELDEN 8216, 83269, 83284, 84316 & TIMES LMR-100A CABLE

DIMENSIONS ARE IN INCHES AND [MILLIMETERS]

UNLESS OTHERWISE NOTED TOLERANCES ARE:  
 DECIMALS DIAMETER

DRAWN  
 C. ZUNIGA 6/3/99  
 CHECKED  
*[Signature]* 6/7/99  
 ORN DRAWN  
 C. ZUNIGA 11/11/97

**RFconnectors**  
 DIVISION OF RF INDUSTRIES, LTD.

7610 MIRAMAR RD  
 SAN DIEGO, CA 92126  
 (619)549-6340  
 (619)549-6345 FAX

## RMX-8010-1B

MCX R/A CRIMP PLUG

ITEM	DESCRIPTION	QTY	MATERIAL	FINISH
7	COVER	1	BRASS	GOLD
6	FERRULE	1	COPPER	GOLD
5	HOUSING	1	BRASS	GOLD
4	DIELECTRIC	1	DELTRIN	NONE
3	DIELECTRIC	1	TEFLON	NONE
2	PIN	1	BRASS	GOLD
1	BODY	1	BeCu	GOLD

SIZE	CABLE GROUP	DWG NO.	REV
A	B	8797	B

APPROVALS	DATE	SCALE:	CAD FILE	SHEET
		4:1	13ARC B	1 OF 1