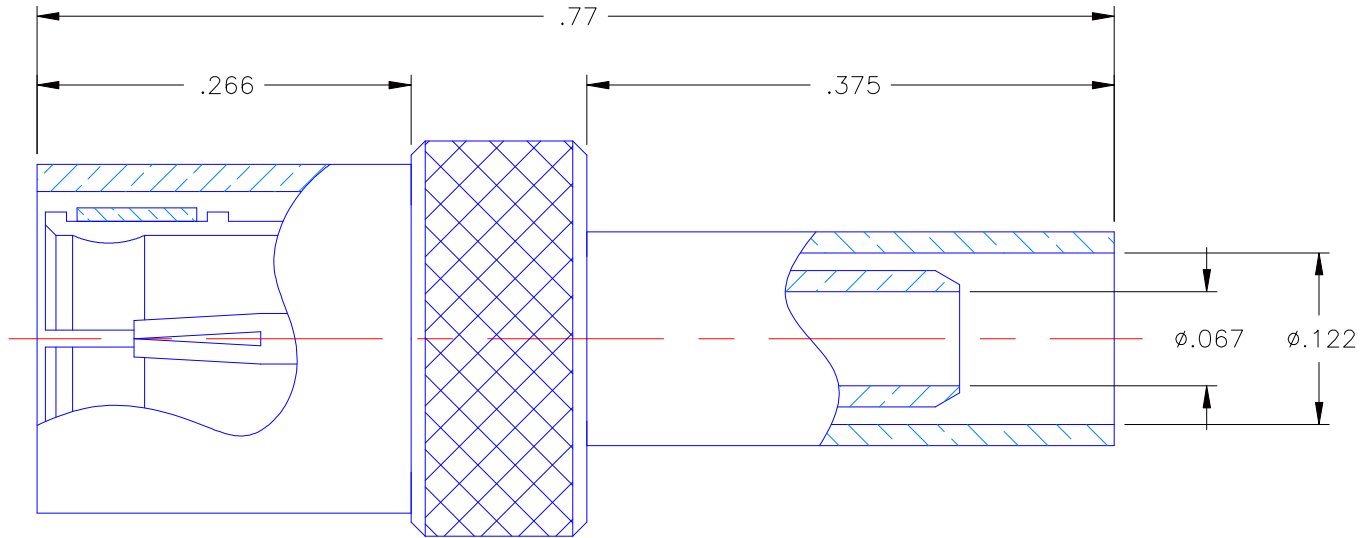


PROPRIETARY INFORMATION
 NOT TO BE RELEASED
 WITHOUT WRITTEN PERMISSION
 FROM AN AUTHORIZED
 REPRESENTATIVE OF
 APPLIED ENGINEERING PRODUCTS

REVISIONS			
REV	DESCRIPTION	DATE	APPROVED
-	INITIAL RELEASE	08/16/00	A.M.
A	ECO #4090	04/24/01	A.D.M.
B	ECO #4102	05/03/01	A.D.M.



NOTES:


CONTACTS CAN BE SOLDERED IF DESIRED.

MATERIALS:

1. BODY & SLEEVE = BRASS PER ASTM B16, ALLOY C36000, TEMPER H02.
2. INSULATOR = VIRGIN WHITE TEFLON PER ASTM D1710, GRADE 1, TYPE I, CLASS "A".
3. CONTACT & SPRING = BERYLLIUM COPPER PER ASTM B196, ALLOY C17300, TEMPER TD04.
4. CRIMP SLEEVE = SEAMLESS COPPER TUBE PER ASTM B75, TYPE C12000, TEMPER: LIGHT ANNEAL O50 EXCEPT YIELD STRENGTH.

FINISHES:

1. CONTACT = GOLD PLATE PER MIL-G-45204, TYPE II, CLASS 1, GRADE C, OVER .00010 TO .00020 STRESS FREE SULFAMATE NICKEL PER QQ-N-290.
2. ALL OTHER METAL PARTS = NICKEL PLATE PER QQ-N-290, CLASS 1, GRADE G, EXCEPT .0001 TO .0002 THICK OVER .00005 TO .0001 THICK COPPER PER MIL-C-14550.

UNLESS OTHERWISE SPECIFIED DIMENSIONS ARE IN INCHES TOLERANCES ON	DWN:	DATE		APPLIED ENGINEERING PRODUCTS			
	A.M.	08/16/00		104 John W. Murphy Dr. New Haven, CT 06513			
DECIMAL	ANGLE	CHKD:	DATE	MINI 75 OHM SMB FEMALE PLUG AIR DIELECTRIC CRIMP/CRIMP FOR RG-179			
		D.N.	08/16/00				
		APVD:	DATE	SIZE	FSCM NO.	DWG NO.	REV
		D.J.C.	08/16/00	A	19505	8802-7721-079	B
REFERENCE:	MATERIALS & FINISHES:		SCALE 7:1		SHEET 1 OF 1		
ORIGINATOR: A.M. DATE: 08/16/00	SEE NOTES						

8802-7721-079