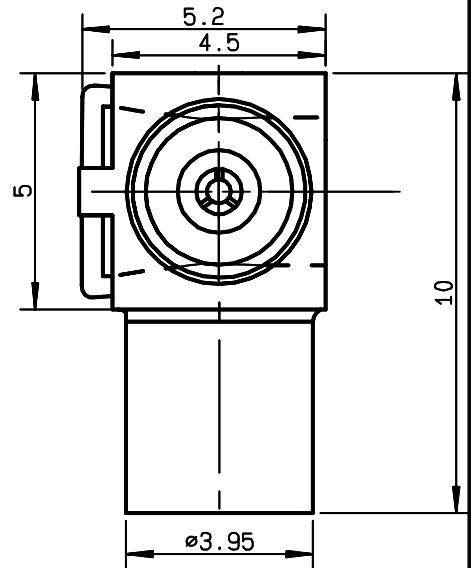
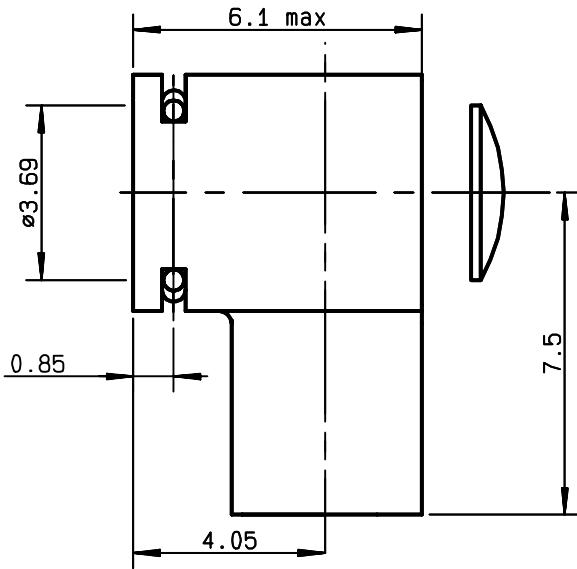


**FEMALE RIGHT ANGLE CABLE PLUG-CRIMP TYPE
CABLE 2.6/50 S**

R210.157.000
SERIES MMT



NOMINAL IMPEDANCE	50 Ω
FREQUENCY RANGE	0-8 GHz
TEMPERATURE RATING	-55/+100 °C
V.S.W.R	1.10 + .05 x F(GHz)Maxi
RF INSERTION LOSS	0.20 √F(GHz) dB Maxi
VOLTAGE RATING	170 Veff Maxi
DIELECTRIC WITHSTANDING VOLTAGE	500 Veff Mini
INSULATION RESISTANCE	5000 MΩMini
HERMETIC SEAL	NA Atm.cm ³ /s
LEAKAGE (pressurized only)	NA
MECHANICAL DURABILITY	500 Cycles
WEIGHT	3.26 gr
SPECIFICATION	

CABLES : **KX 22A**
RG 188
RG 316

OTHERS CHARACTERISTICS

accouplt : 18Nmax / desacc. : 7Nmin

CABLE RETENTION	40 N Mini
CENTER CONTACT RETENTION	
Axial force - mating end	8 N Mini
Axial force - opposite end	NA N Mini
Torque	NA cm.N Mini
RECOMMENDED TORQUES	
Mating	NA cm.N
Panel nut	NA cm.N
Clamp nut	NA cm.N

CONNECTOR PARTS. MATERIALS

BODY	ZAMAK
OUTER CONTACT	ZAMAK
CENTER CONTACT	BERYLLIUM COPPER
INSULATOR	PTFE
GASKET	
OTHERS PIECES	BRASS

FINISH

(all values are given)
in micrometers

NICKEL 2 OVER COPPER	10
NICKEL 2 OVER COPPER	10
GOLD 0.5 OVER NICKEL	2
-	
-	
NICKEL	.

GONZALES

ISSUE 9914B00	CREATION DATE 10/05/1996	FILE PART-NUMBER
-------------------------	------------------------------------	------------------



RADIALL®

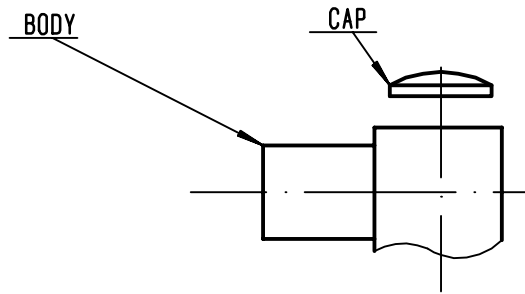
The information given here is subject to change without notice.
Design changes may be in order to improve the product .

Connect to the future



R210.157.000

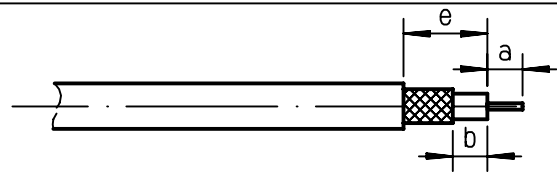
ISSUE **9914B00** SERIES **MMT**



①

Strip the cable .

-
-



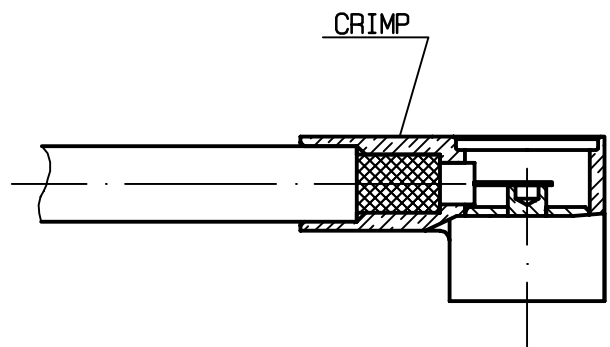
Stripping	a	b	c	d	e
inch	0.098	0.079	0	0	0.177
mm	2.5	2			4.5

②

Introduce the cable into the connector body until contact with the body shoulder.

Crimp body on the cable .

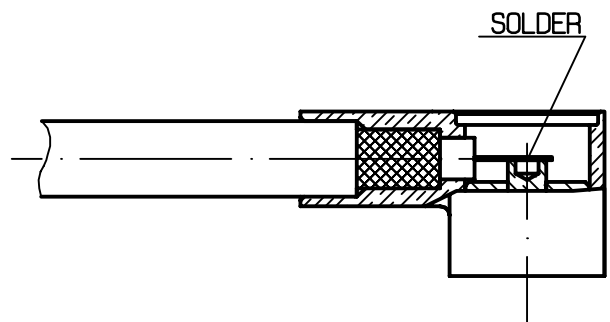
Hex :0.128 (3.25)



③

Solder inner conductor onto the pin .

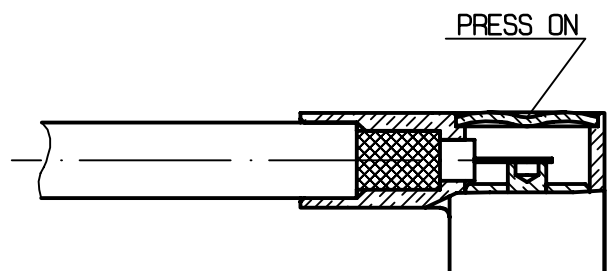
-



④

Place the cap and press it .

-
-
-





R210.157.000

ISSUE 9914B00 SERIES MMT

A SPECIAL TOOL MUST BE USED TO REMOVE THE RIGHT ANGLE MMT PLUG FROM THE SMT RECEPTACLE.

- 1- INSERT THE TOOL UNDER THE RIGHT ANGLE MMT PLUG AS SHOWN.
- 2- PULL OFF IN THE VERTICAL DIRECTION TO EXTRACT THE RIGHT ANGLE MMT PLUG.

