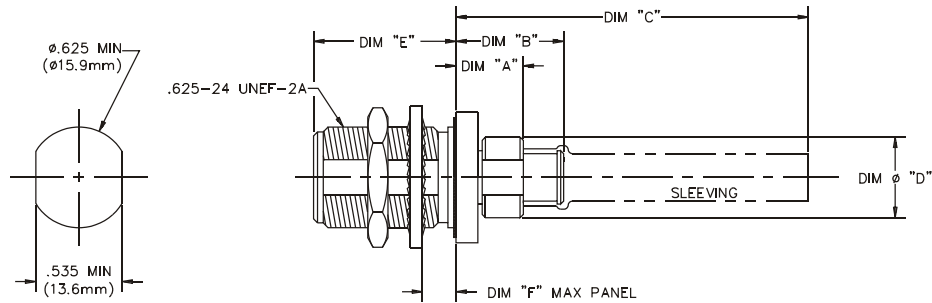
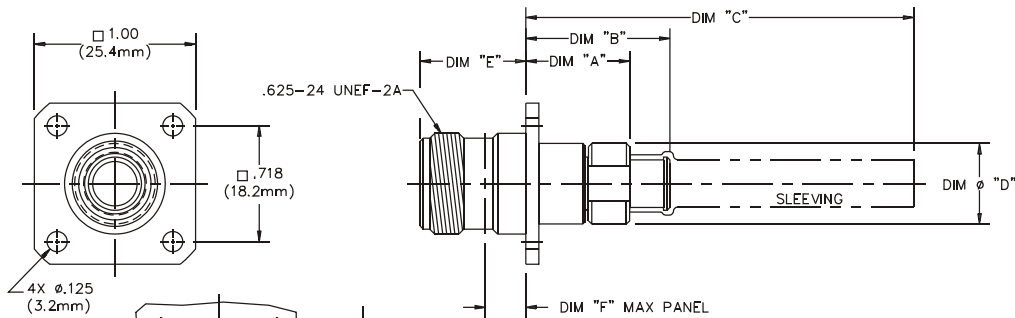


#### HPI GROUP CONNECTORS (N Type)

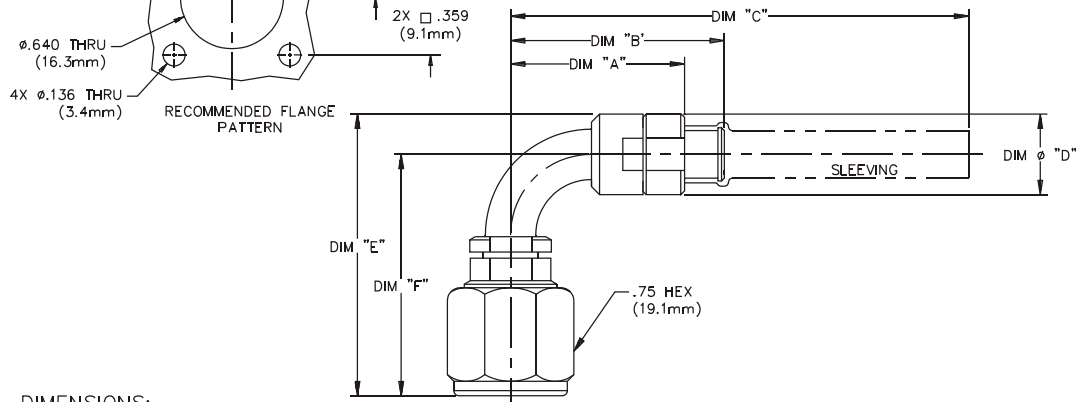
N4 N TYPE BHD FEMALE



N5 N TYPE 4FM FEMALE



N6 N TYPE RAT MALE



DIMENSIONS:

| CABLE | CONNECTOR NUMBER | TYPE | DIM "A" |      | DIM "B" |      | DIM "C" |       | DIM $\phi$ "D" |      | DIM "E" |      | DIM "F" |      |
|-------|------------------|------|---------|------|---------|------|---------|-------|----------------|------|---------|------|---------|------|
|       |                  |      | INCHES  | mm   | INCHES  | mm   | INCHES  | mm    | INCHES         | mm   | INCHES  | mm   | INCHES  | mm   |
| HP190 | 20514-111        | N4   | .42     | 10.7 | .67     | 17.0 | 2.19    | 55.6  | .50            | 12.7 | .884    | 22.4 | .25     | 6.4  |
|       | 20515-110        | N5   | .64     | 16.3 | .89     | 22.6 | 2.41    | 61.2  | .50            | 12.7 | .900    | 22.9 | .25     | 6.4  |
|       | 20516-111        | N6   | 1.08    | 27.4 | 1.33    | 33.8 | 2.84    | 72.1  | .50            | 12.7 | .884    | 22.4 | 1.50    | 38.1 |
| HP305 | 20698-111        | N4   | .38     | 9.7  | .79     | 20.1 | 2.38    | 60.5  | .60            | 15.2 | .656    | 16.7 | .25     | 6.4  |
|       | 20699-110        | N5   | .62     | 15.7 | 1.03    | 33.0 | 2.57    | 65.3  | .60            | 15.2 | .656    | 16.7 | .25     | 6.4  |
|       | 20700-111        | N6   | 1.33    | 33.8 | 1.75    | 44.5 | 3.29    | 83.6  | .60            | 15.2 | .730    | 18.5 | 2.03    | 51.6 |
| HP450 | 20575-111        | N4   | .65     | 16.5 | 1.06    | 26.9 | 2.68    | 68.1  | .812           | 20.6 | 1.75    | 44.5 | .25     | 6.4  |
|       | 20576-110        | N5   | .81     | 20.6 | 1.21    | 30.7 | 2.83    | 71.9  | .812           | 20.6 | 2.33    | 59.2 | .25     | 6.4  |
|       | 20577-111        | N6   | 1.97    | 50.0 | 2.37    | 60.2 | 3.98    | 101.1 | .812           | 20.6 | 1.93    | 49.0 | 1.52    | 38.6 |

