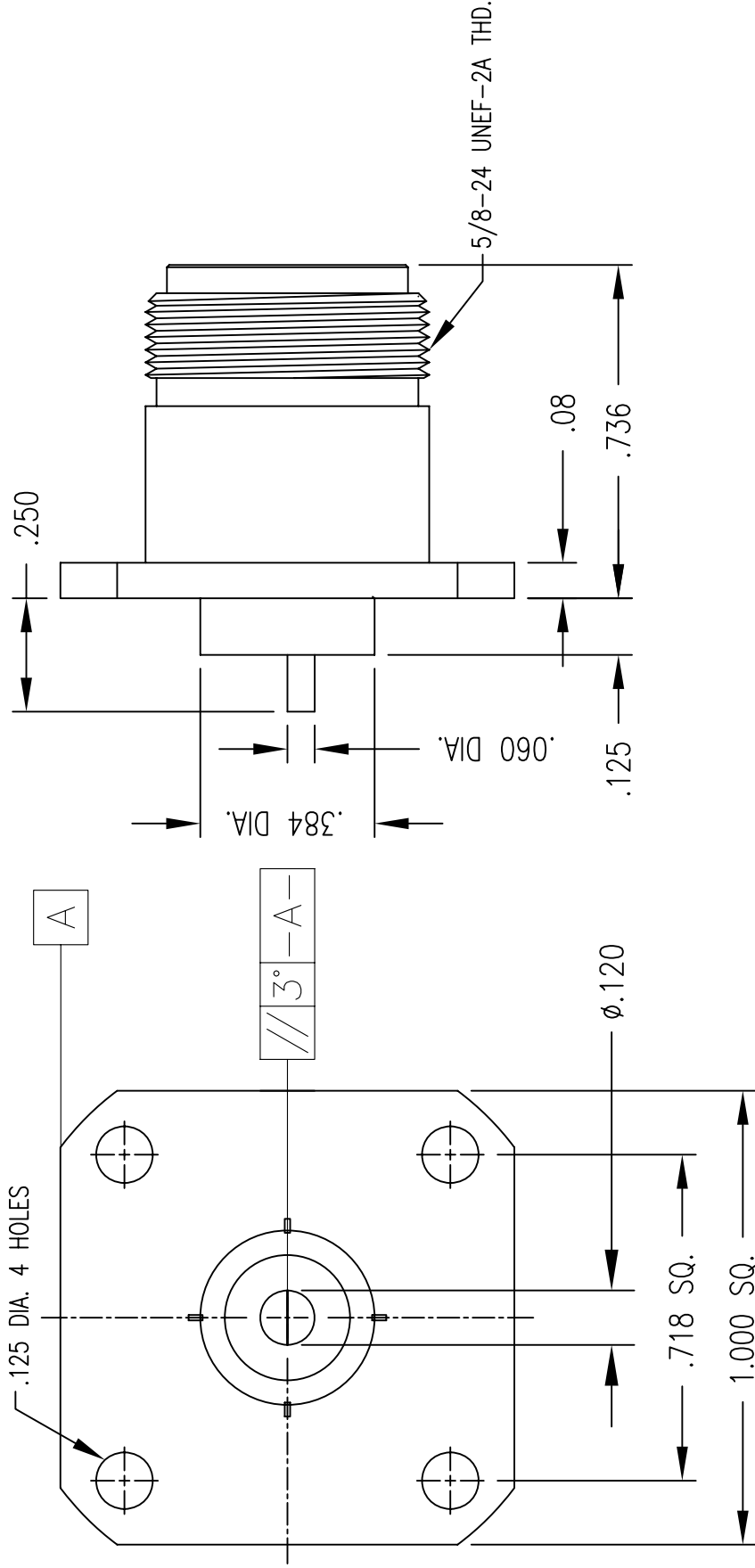


DWG NO.	OL-0406-317-1	REV.	A
PART NUMBER	BODY	CONTACT	
0406-317-NG	NICKEL	GOLD	

PLATING PER SAN-TRON SPEC. 7.3.1-8

- 2.2 CONTACT: BERYLLIUM COPPER
- 2.3 ALL OTHER METAL PARTS: BRASS
- 3.0 FINISHES : SEE TABLE
- 4.0 MECHANICAL
- 4.1 INTERFACE IN ACCORDANCE WITH MIL-STD-348

- 1.0 PERFORMANCE
- 1.1 FREQUENCY RANGE: DC-11GHZ
- 1.2 VOLTAGE RATING: 1000V RMS (sea level)
- 1.3 NOMINAL IMPEDANCE: 50 OHMS
- 1.4 DWV: 2500 V RMS @ 60 Hz (sea level)
- 1.5 TEMPERATURE RANGE: -65°C TO +165°C
- 2.0 MATERIALS
- 2.1 DIELECTRIC: PTFE



SAN-TRON, INC.
 4 NEWBURYPORT TPK. IPSWICH MA USA 01938
 TEL: 978 - 356 -1585 FAX: 978 - 356 -1573
 WWW.santron.com E MAIL: santron@santron.com

TITLE N PANEL RECEPTACLE, F, EXTENDED
 PROBE & DIELECTRIC

MATERIAL:	SEE NOTES	FINISH:	SEE TABLE
CAGE CODE:	50896	DWG NO.	OL-0406-317-1
SCALE	X:X	REV.	A

THIS DRAWING CONTAINS CONFIDENTIAL INFORMATION PROPRIETARY TO SAN-TRON, INC. IT MUST NOT BE REPRODUCED OR DISCLOSED TO OTHERS OR USED IN ANY OTHER WAY, IN WHOLE OR PART EXCEPT AS AUTHORIZED IN WRITING BY SAN-TRON, INC.

UNLESS OTHERWISE SPECIFIED:
 ALL DIMENSIONS ARE IN INCHES.
 ALL DIMENSIONS ARE AFTER PLATING.
 .XXX= ±.005 ALL MACHINED SURFACES 64 MAX.
 .XX= ±.01 ANG.±1/2' FRACTIONAL= ±1/64

⑩ .004 MAX. TIR.	⊥	AXIS	.001
DWN	RUG	10/01/10	
CHKD	SJS	/	
APPR			

Rev.	Revisions	Ref.:	SK-
A1	ADD GEO TOL	10/04/10	RUG SJS
A	ORIGINAL	10/01/10	
	Disp.	Date	Dwn. Appd.
	REMOVE ALL BURRS AND SHARP EDGES .005 MAX.		INTERPRET PER ASME Y14.5M-1994

D O N O T S C A L E D R A W I N G