

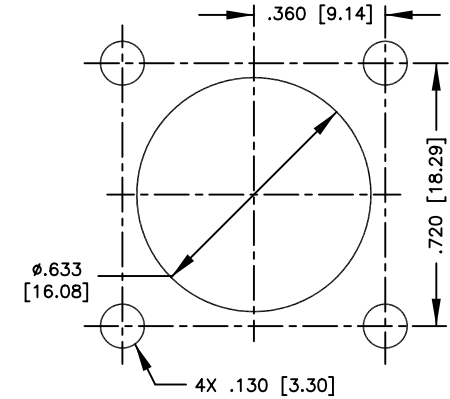
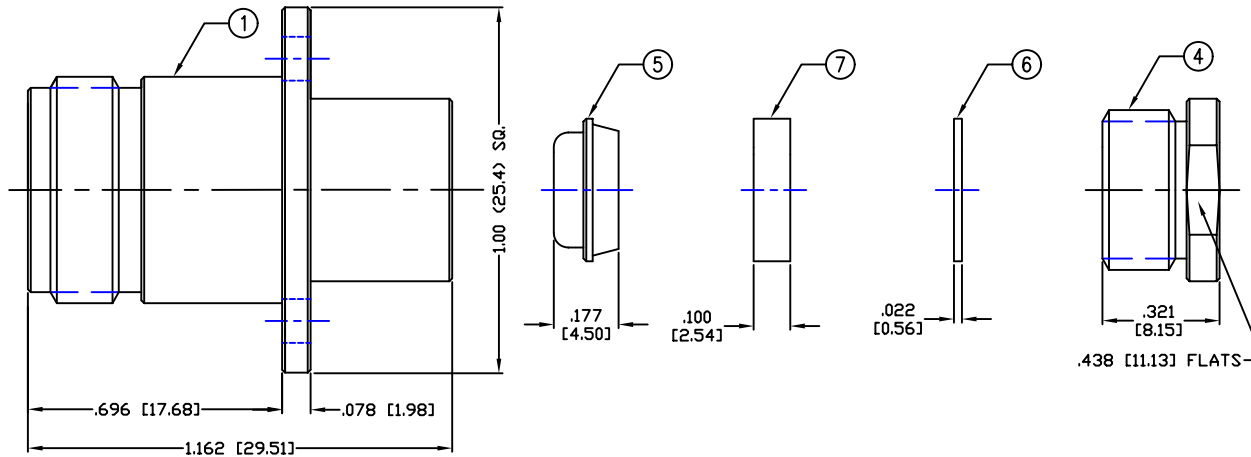
THIS DRAWING CONTAINS INFORMATION PROPRIETARY TO RF INDUSTRIES,
 ANY UNAUTHORIZED USE OF THIS DRAWING IS EXPRESSLY PROHIBITED
 WITHOUT WRITTEN PERMISSION FROM RF INDUSTRIES.
 ANY VIOLATION IS PUNISHABLE UNDER U.S. COPYRIGHT LAWS.

ALL DIMENSIONS ARE REFERENCE ONLY

PART NO.

RFN-1021-6

REV	DESCRIPTION	DWN	DATE	APPROVED
B	CREATE SECTION DRAWING	KMM	5/18/94	R. RICE
C	CHG DIMS THROUGHOUT TO STANDARDIZE/CON NOW P. BRONZE	CZS	9/9/99	R. RICE
D	CHANGE CON MATERIAL, BODY ID & CLAMP OD & LENGTH	CZS	10/26/99	R. RICE
E	CHANGE FORMAT, SPECS & DWG # 8352	GGG	8/27/01	JDMc

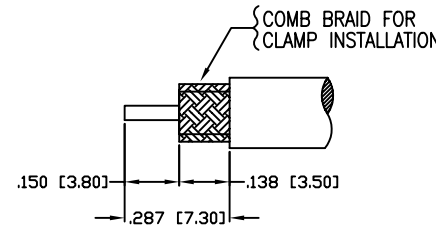


SUGGESTED MOUNTING CONFIGURATION

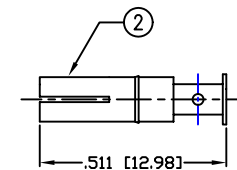
SPECIFICATIONS:

IMPEDANCE: 50 Ohms
 FREQUENCY RANGE: 0-11 GHz
 VSWR: 1.3 Max. @ 9 GHz
 INSERTION LOSS: .06 dB Max. X \sqrt{f} GHz
 WORKING VOLTAGE: 1k V rms @ sea level
 TEMPERATURE RANGE: -65°C TO 165°C
 INSULATION RESISTANCE: 5k M Ohms min.

(C) FOR RG-58, 58A, 58C, 141, 141A, BELDEN 8240,
 8262, 9201, 9203, 9310, 9311 & COMM/SCOPE 0268
 (C1) FOR RG-55, 55A, 55B, 142, 142A, 142B, 223/U & 400/U,
 ALPHA 9055, 9055B, 9223, BELDEN 8219, 83242, 84142, & 9907



RECOMMENDED STRIPING DIMS



RECOMMENDED CRIPING DIE: .068

1	BODY	1	BRASS	SILVER, 80μ"	000486
2	PIN	1	BRASS	GOLD, 3μ"	
3	DIELECTRIC	1	PTFE	---	
4	BACK NUT	1	BRASS	SILVER, 80μ"	
5	CLAMP	1	BRASS	SILVER, 80μ"	
6	WASHER	1	BRASS	SILVER, 80μ"	
7	GASKET	1	S.I.RUBBER	---	
8	GROUND RING	1	BRASS	SILVER, 80μ"	
9					
10					
11					
12					
13					
14					

UNLESS OTHERWISE SPECIFIED:
 1. REMOVE ALL BURRS
 2. BREAK ALL CORNERS & EDGES .005 R. MAX.
 3. CHAMFER 1ST & LAST THREADS 45°
 4. SURFACE ROUGHNESS 63 FINISH MIL-STD-10
 5. DIAMETERS ON COMMON CENTERS TO BE CONCENTRIC WITHIN .002 T.I.R.
 6. ALL DIMENSIONS ARE AFTER PLATING.

DIMENSIONS ARE IN INCHES AND [MILLIMETERS]
 UNLESS OTHERWISE NOTED TOLERANCES ARE:
 DECIMALS .XXX±.003 [.08]
 .XX±.005 [.13]
 DIAMETER .XXX±.001 [.03]
 .XX±.003 [.08]

RF connectors
 DIVISION OF RF INDUSTRIES, LTD.

7610 MIRAMAR RD
 SAN DIEGO, CA 92126
 (858) 549-6340
 (858) 549-6345 FAX

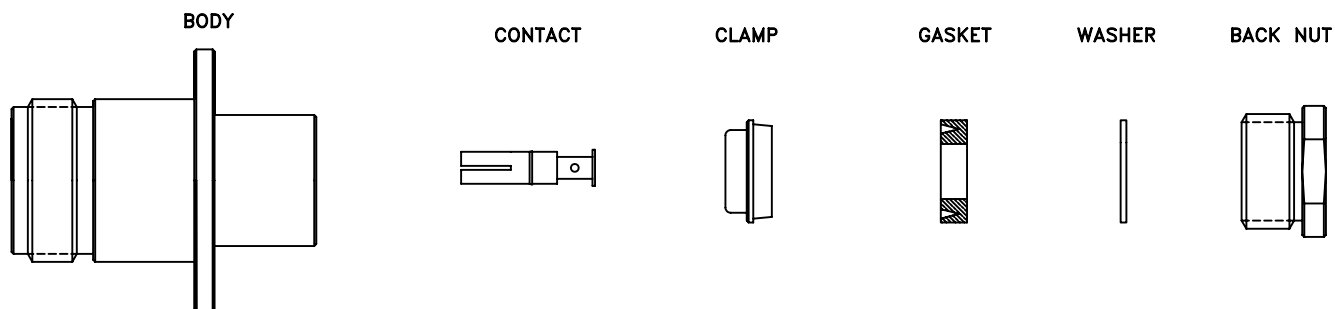
N JACK, CLAMP

4 HOLE FLANGE

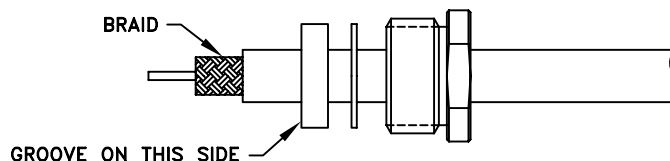
SIZE	CABLE GROUP	DWG NO.	REV
A	C, C1	RFN-1021-6	E
SCALE:	NTS	CAD FILE OUTLINE	SHEET 1 OF 1

CABLE ASSEMBLY INSTRUCTIONS

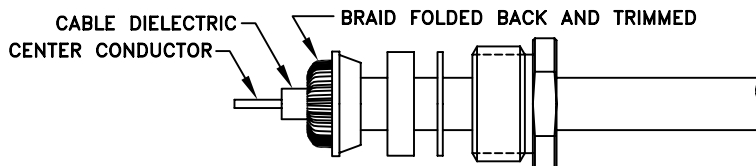
RFN-1021-6



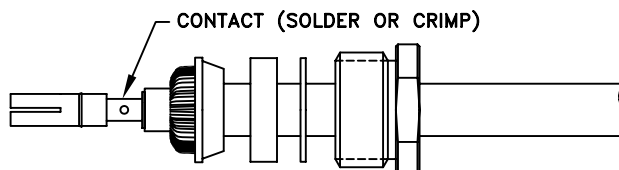
STEP 1



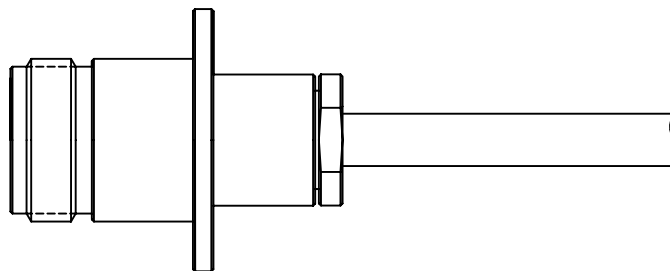
STEP 2



STEP 3



STEP 4



Step 1: Cut end of cable evenly. Strip cable to dimensions shown on envelope/outline drawing. All cuts are to be clean and square. Do not nick braid, dielectric or center conductor. Slide back nut, washer and gasket onto cable. Braid must be combed for assembly of clamp.

Step 2: Place the clamp over braid and push clamp back against cable jacket. Fold back braid wire and form over the clamp evenly. Trim extra braid if needed.

Step 3: Slide pin onto center conductor until it yields against the cable dielectric. Pre tin cable conductor if using stranded cable (if needed). Solder or crimp pin in place. If soldering use minimum amount of heat.

Step 4: Properly seat groove of gasket onto clamp. Insert pin, cable and hardware into the body. Tighten back nut while holding body stationary.

RFN-1021-6 AP.DWG

RF CONNECTORS

5/3/06

7610 Miramar Road, San Diego, CA 92126-4202 - (858) 549-6340
(800) 233-1728 - Fax (858) 549-6345 E-mail: rfi@rfindustries.com - www.rfindustries.com

CZ