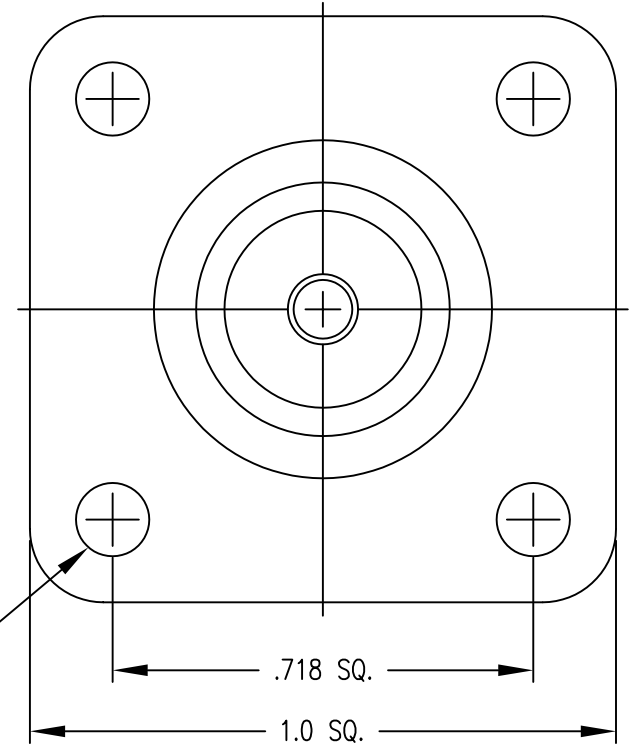
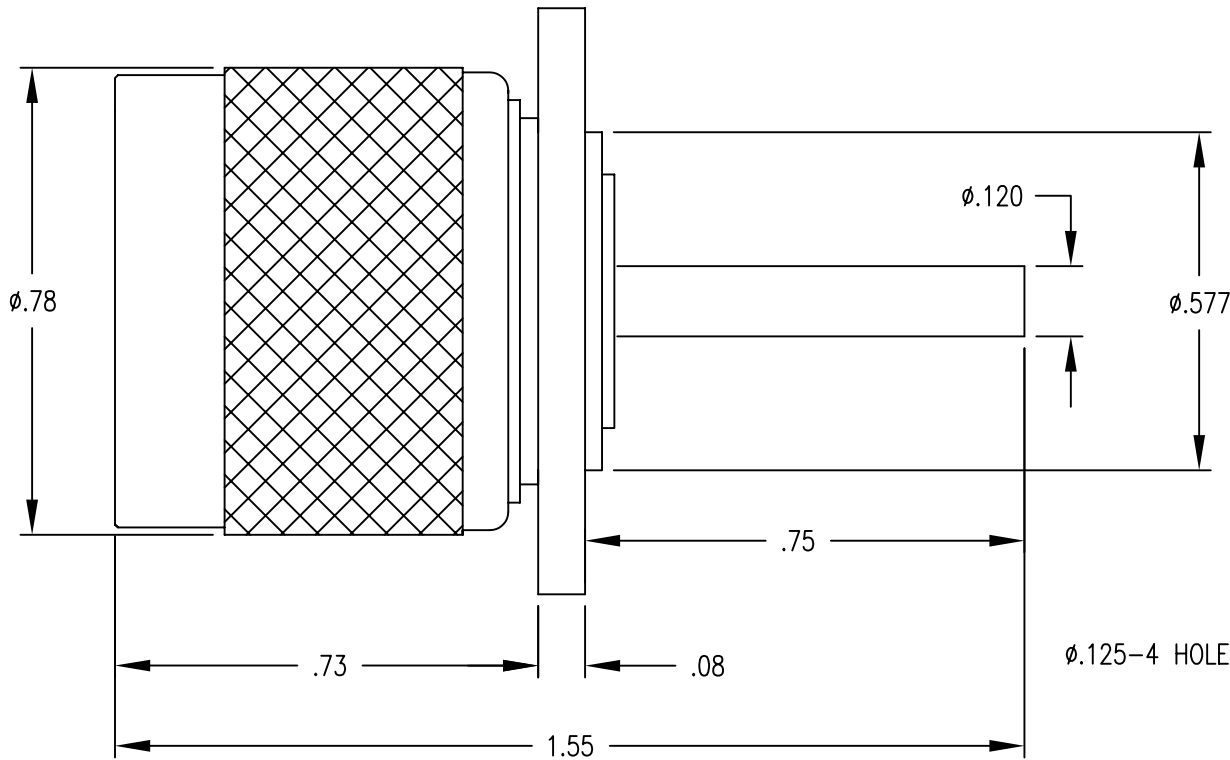


- 1.0 PERFORMANCE
- 1.1 FREQUENCY RANGE: DC-11GHz
- 1.2 VOLTAGE RATING: 1000V RMS (sea level)
- 1.3 NOMINAL IMPEDANCE: 50 OHMS
- 1.4 DWV: 2500 V RMS @ 60 Hz (sea level)
- 1.5 TEMPERATURE RANGE: -65°C TO +165°C
- 2.0 MATERIALS:
- 2.1 DIELECTRIC: TEFLON, ASTM-D-1710

- 2.2 CENTER CONTACT: BRASS PER ASTM-B-16
- 2.3 LOCKING RING: PHOSPHOR BRONZE, ASTM-B-159, ALLOY 510
- 2.4 OTHER METAL PARTS: BRASS, ASTM-B-16
- 2.5 GASKET: SILICONE RUBBER, ZZ-R-765, GR. 50, RED
- 3.0 FINISHES
- 3.1 CENTER CONTACT: GOLD PLATED
- 3.2 ALL OTHER METAL PARTS: SILVER PLATED
- 4.0 MECHANICAL:
- 4.1 INTERFACES IN ACCORDANCE WITH MIL-STD-348

DWG NO. OL-0406-124-1	REV. A
--------------------------	-----------



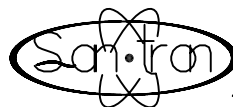
A	ORIGINAL	7/10/02	<input checked="" type="checkbox"/>	<input checked="" type="checkbox"/>	
Rev.	Revisions	Date	Dwn.	Appd.	

PROPRIETARY
THIS DRAWING CONTAINS CONFIDENTIAL INFORMATION
PROPRIETARY TO SAN*TRON INC. IT MUST NOT BE
REPRODUCED OR DISCLOSED TO OTHERS OR USED IN
ANY OTHER WAY, IN WHOLE OR PART EXCEPT AS
AUTHORIZED IN WRITING BY SAN*TRON INCORPORATED.

REMOVE ALL BURRS AND SHARP
EDGES .005 MAX.
UNLESS OTHERWISE STATED
ALL DIMENSIONS ARE IN INCHES
AND APPLY AFTER PLATING

UNSPECIFIED TOL.	DWN	JMB	7/9/02
.XX ± .010	CHKD	FH	7/10/02
.XXX ± .005			
FRAC. ± 1/64	APPR	FH	7/10/02

CONCENTRICITY .004 TIR ⁶³/_✓
ALL MACHINED SURFACES



SAN • TRON, INC.
4 NEWBURYPORT TPK, IPSWICH, MA 01938

TITLE N MALE, PANEL RECEPTACLE
STRAIGHT, EXTENDED POST

MATERIAL: SEE NOTE 2.0	FINISH: SEE NOTE 3.0
---------------------------	-------------------------

FSCM NO. 50896	DWG NO. OL-0406-124-1	REV. A
SCALE 3:1		