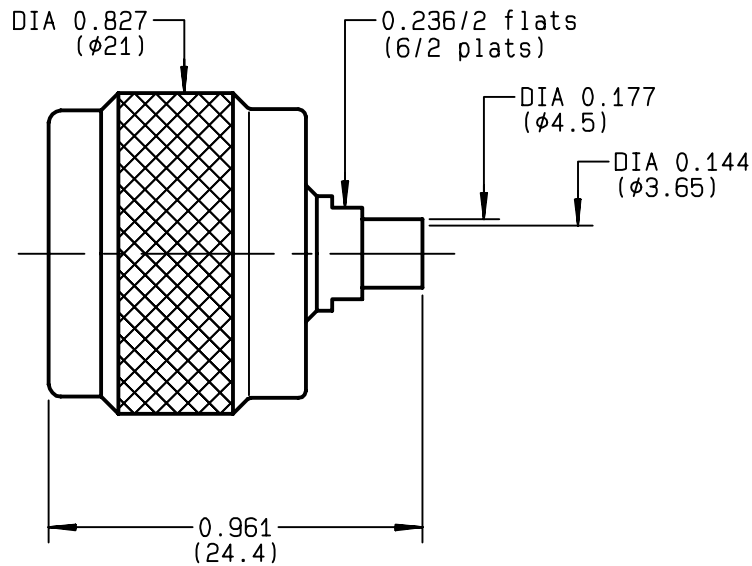


**STRAIGHT PLUG SOLDER TYPE
CABLE .141**

R161.051.000
SERIES N



NOMINAL IMPEDANCE	50 Ω	CABLES : KS 2
FREQUENCY RANGE	0-11 GHz	RG 402
TEMPERATURE RATING	-55/+105 °C	
V.S.W.R	1.15 + x F(GHz)Maxi	
RF INSERTION LOSS	0.048 √F(GHz) dB Maxi	
VOLTAGE RATING	335 Veff Maxi	
DIELECTRIC WITHSTANDING VOLTAGE	1000 Veff Mini	
INSULATION RESISTANCE	5000 MΩMini	OTHERS CHARACTERISTICS
HERMETIC SEAL	NA Atm.cm ³ /s	CABLE RETENTION 500 N Mini
LEAKAGE (pressurized only)	NA	CENTER CONTACT RETENTION
MECHANICAL DURABILITY	500 Cycles	Axial force - mating end NA N Mini
WEIGHT	24.86 gr	Axial force - opposite end NA N Mini
SPECIFICATION		Torque NA cm.N Mini
		RECOMMENDED TORQUES
		Mating 130 cm.N
		Panel nut NA cm.N
		Clamp nut NA cm.N

CONNECTOR PARTS	MATERIALS	FINISH
BODY	BRASS	GOLD 0.2 OVER NICKEL 2
OUTER CONTACT		
CENTER CONTACT	BRASS	GOLD 0.5 OVER NICKEL 2
INSULATOR	PTFE	-
GASKET	SILICONE RUBBER	-
OTHERS PIECES	BRASS	BBR 2

(all values are given in micrometers)

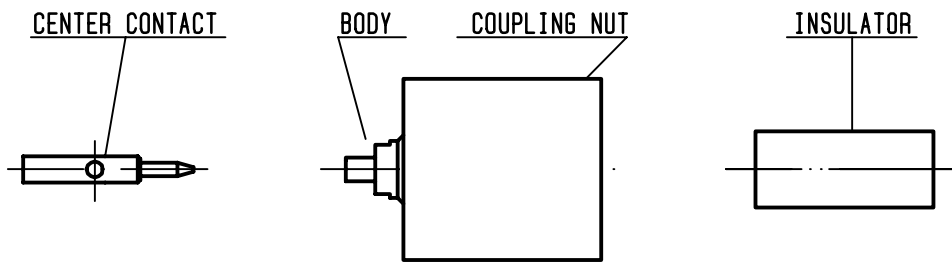
BONOMINI	ISSUE	CREATION DATE	FILE PART-NUMBER	
	0248K01	08/02/1993	EPC 96-07	

The information given here is subject to change without notice. Design changes may be in order to improve the product.



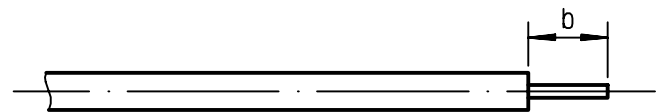
R161.051.000

ISSUE **0248K01** SERIES **N**



①

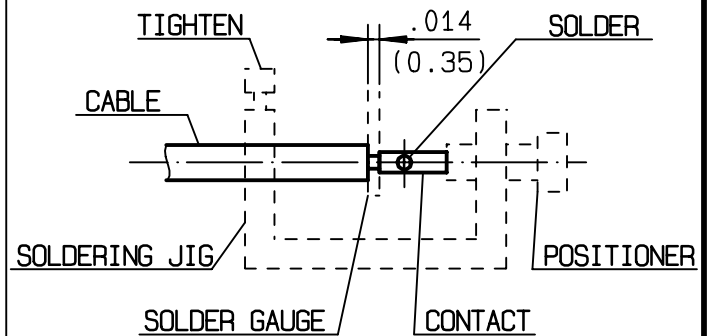
Take the tool kit : R 282 125 010 .
Strip the dielectric of the cable .
Stripping tool cable : R 282 053 .
Trimmer : R 282 066 010 .
Clean the cable .
-



Stripping	a	b	c	d	e
inch	0	0.177 0	0	0	0
mm		4.5			

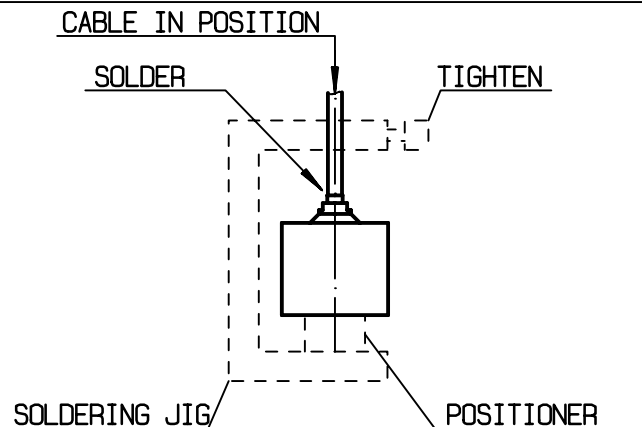
②

Screw the positioner R 282 744 261 onto the soldering jig R 282 740 030 .
Slide contact into positioner .
Insert solder gauge R 282 862 070 between contact and cable .
Tighten and solder the contact .



③

After cooling remove cable assembly from the jig .
Screw positioner R 282 744 340 into the connector .
Slide cable into the connector until it bottoms againsts positioner R 282 744 340 .
Tighten .
Put 3 rings of solder around the cable and solder .



④

After cooling remove cable assembly from the jig .
Screw female dielectric insert tool onto connector and cut the excess of dielectric with the dielectric recess tool R282 915 030 .
Insert insulator with the dielectric plunger .
Dielectric insert tool and dielectric plunger : R282 730 161 .

