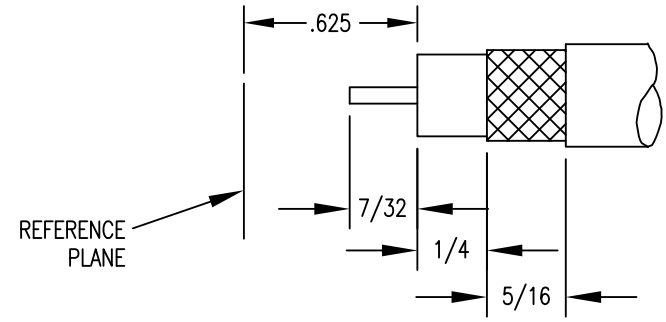
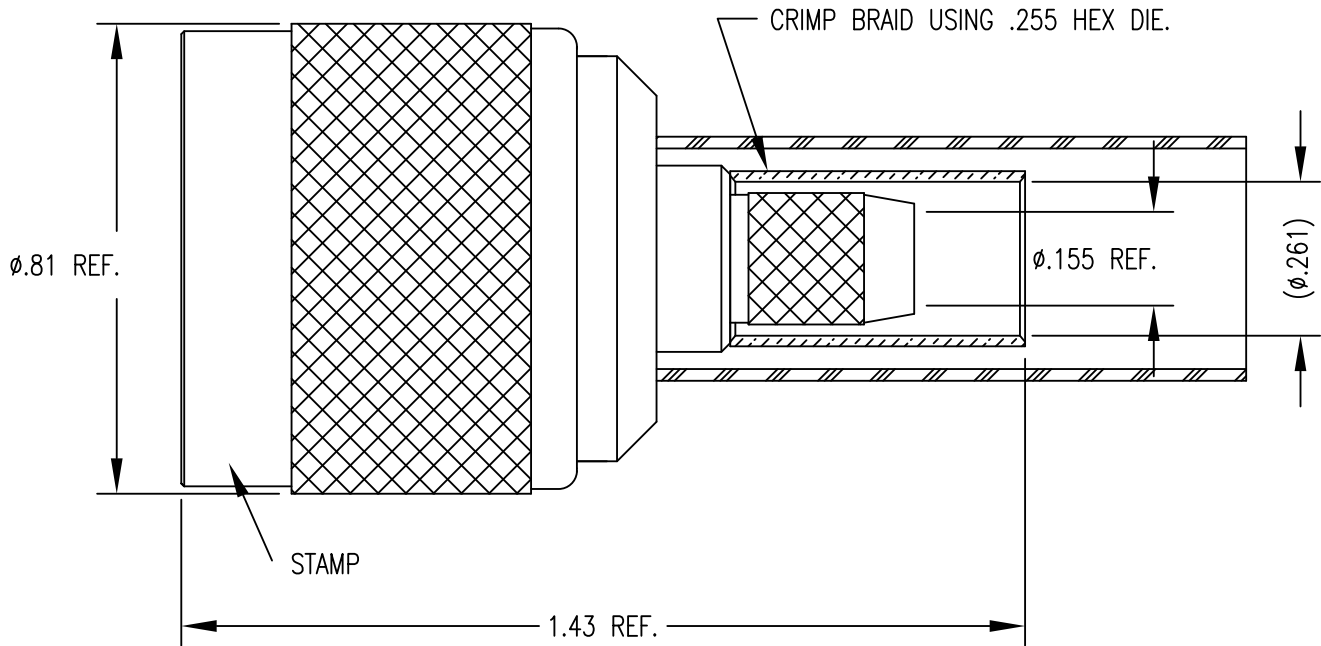


- 1.0 PERFORMANCE
- 1.1 FREQUENCY RANGE: DC-6GHz
- 1.2 VOLTAGE RANGE: 1000V RMS (sea level)
- 1.3 NOMINAL IMPEDANCE: 50 OHMS
- 1.4 DWV: 2500V RMS @ 60Hz (sea level)
- 1.5 TEMPERATURE RANGE: -65°C TO +165°C
- 2.0 MATERIALS
- 2.1 DIELECTRIC: TEFLON, ASTM-D-1710
- 2.2 CONTACTS: BRASS, ASTM-B-16
- 2.3 CRIMP FERRULE: DHP SOFT COPPER CDA 122, SOFT TEMPER

- 2.4 LOCKING RING: PHOSPHOR BRONZE, ASTM-B-159, ALLOY 510
- 2.5 OTHER METAL PARTS: BRASS, ASTM-B-16
- 2.6 GASKET: SILICON RUBBER, ZZ-R-765, GR. 50, RED
- 2.7 SHRINK SLEEVE: THICK WALL POLYOLEFIN, MIL-I-25053/4, CLASS 3, BLACK
- 3.0 FINISHES
- 3.1 CENTER CONTACT: GOLD PLATED
- 3.2 ALL OTHER METAL PARTS: NICKEL PLATED
- 4.0 MECHANICAL
- 4.1 INTERFACE IN ACCORDANCE WITH MIL-STD-348

DO NOT SCALE DRAWING



CABLE PREPARATION DETAIL: D04 (NOT TO SCALE)

Rev.	Revisions	Disp.	Date	Dwn.	Appd.
C	CRIMP FERRULE $\phi$ .261 WAS $\phi$ .272	IMP	11/18/13	FSH	FSH
B	C-NUT KNURL WAS $\phi$ .78 REF	MIX	4/23/08	SJS	FSH
A	ORIGINAL	NEW	03/25/03		

RECOM. STOCK SIZE	FT/M PCS	Ref.: SK	REMOVE ALL BURRS AND SHARP EDGES .005 MAX.	INTERPRET PER ASME Y14.5M-1994
-------------------	----------	----------	--	--------------------------------

THIS DRAWING CONTAINS CONFIDENTIAL INFORMATION PROPRIETARY TO SAN-TRON INC. IT MUST NOT BE REPRODUCED OR DISCLOSED TO OTHERS OR USED IN ANY OTHER WAY, IN WHOLE OR PART EXCEPT AS AUTHORIZED IN WRITING BY SAN-TRON INCORPORATED.

UNLESS OTHERWISE SPECIFIED:  
 ALL DIMENSIONS ARE IN INCHES.  
 ALL DIMENSIONS ARE AFTER PLATING.  
 .XXX=  $\pm$ .005 ALL MACHINED SURFACES  $\sqrt{63}$  MAX.  
 .XX=  $\pm$ .01 ANG. $\pm$ 1/2' FRACTIONAL=  $\pm$ 1/64  
 ◎.004 MAX. TIR. ⊥ AXIS .001

THIRD ANGLE PROJECTION

DWN	LAP	03/24/03
CHKD	SJS	03/24/03
APPR	FSH	03/25/03

**SAN-TRON, INC.**  
 4 NEWBURYPORT TPK. IPSWICH MA USA 01938  
 TEL: 978 - 356 -1585 FAX: 978 - 356 -1573  
 WWW.santron.com E MAIL: santron@santron.com

**San-tron**

TITLE: N PLUG, STRAIGHT, CRIMP - FOR HUBER & SUHNER S04172D CABLE

MATERIAL: SEE NOTE 2.0 FINISH: SEE NOTE 3.0

CAGE CODE: 50896 DWG NO. OL-0401-94-1 REV. C

SCALE: 3:1