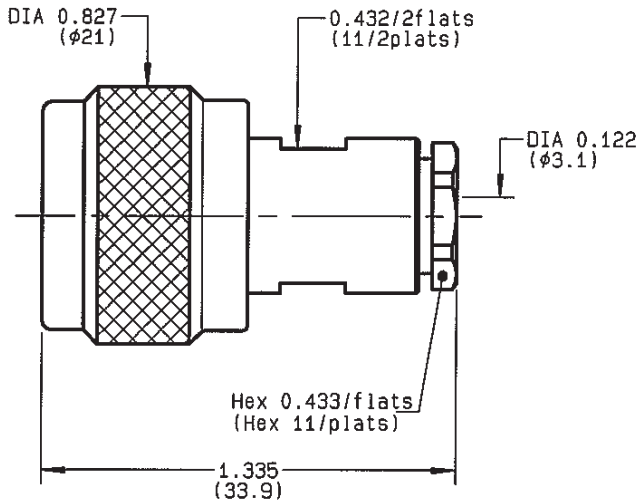


STRAIGHT PLUG CLAMP TYPE CABLE 2.6/50+75	R161.004.000 SERIES N
---	--



<p>NOMINAL IMPEDANCE 50 Ω</p> <p>FREQUENCY RANGE 0-11 GHz</p> <p>TEMPERATURE RATING -55/+155 °C</p> <p>V.S.W.R 1.40 + x F(GHz)Maxi</p> <p>RF INSERTION LOSS 0.048 √F(GHz) dB Maxi</p> <p>VOLTAGE RATING 250 Veff Maxi</p> <p>DIELECTRIC WITHSTANDING VOLTAGE 750 Veff Mini</p> <p>INSULATION RESISTANCE 5000 MΩMini</p> <p>HERMETIC SEAL NA Atm.cm³/s</p> <p>LEAKAGE (pressurized only) NA</p> <p>MECHANICAL DURABILITY 500 Cycles</p> <p>WEIGHT 36.40 gr</p> <p>SPECIFICATION</p>	<p>CABLES : K02252D K02252D SPL KX 22A RD 316 RG 179 RG 187 RG 188 RG 316</p> <p>OTHERS CHARACTERISTICS</p> <p>CABLE RETENTION 40 N Mini</p> <p>CENTER CONTACT RETENTION</p> <p>Axial force - mating end 27 N Mini</p> <p>Axial force - opposite end 27 N Mini</p> <p>Torque NA cm.N Mini</p> <p>RECOMMENDED TORQUES</p> <p>Mating 130 cm.N</p> <p>Panel nut NA cm.N</p> <p>Clamp nut 150 cm.N</p>
---	---

CONNECTOR PARTS	MATERIALS	FINISH	(all values are given in micrometers)
BODY	BRASS	BBR 2	
OUTER CONTACT	BRASS	BBR 2	
CENTER CONTACT	BRASS	GOLD 0.5 OVER NICKEL 2	
INSULATOR	PTFE	-	
GASKET	SILICONE RUBBER	-	
OTHERS PIECES	BRASS	BBR 2	

BONDIMINT

ISSUE 0523D01	CREATION DATE 12/10/1992	FILE PART-NUMBER EPC 96-07	 RADIALL®
-------------------------	------------------------------------	--------------------------------------	--

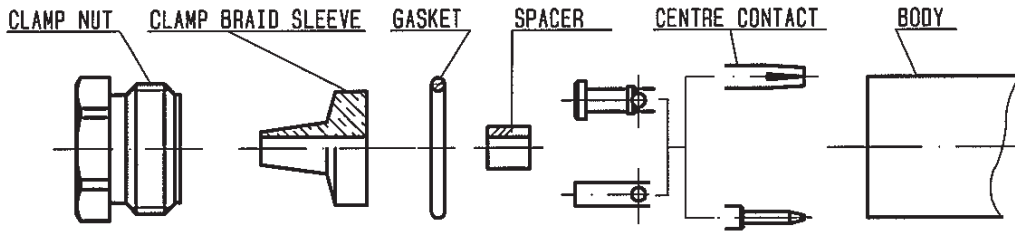
The information given here is subject to change without notice.
Design changes may be in order to improve the product.

Connect to the future

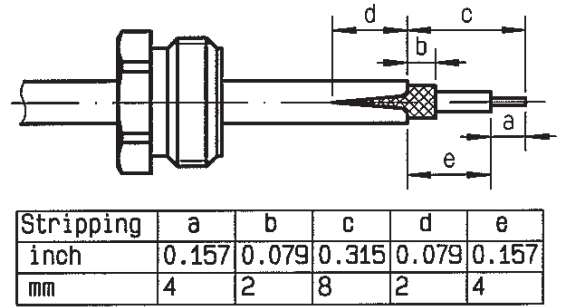


R161.004.000

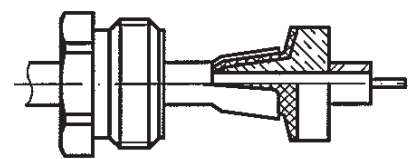
ISSUE 0523 D01 SERIES N



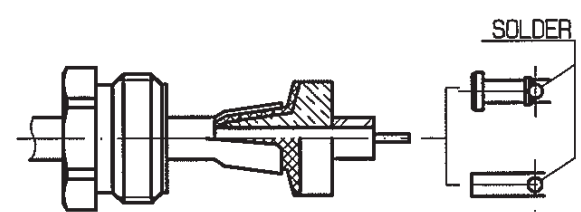
①
 Slide clamp nut onto cable .
 Strip the cable .
 Cut the jacket (2 slots)
 appart if necessary .
 -



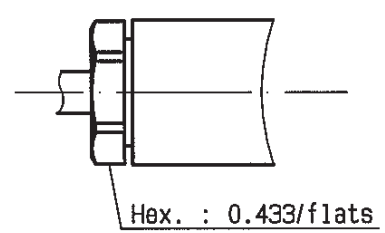
②
 Slide the clamp braid sleeve between
 cable dielectric and braid .
 Cut the braid flush with the clamp
 braid sleeve .
 Slide the spacer .
 -
 -
 -



③
 Solder the cable inner conductor into
 centre contact .
 Slide the back nut over the clamp
 assembly .
 -
 -
 -
 -



④
 Mount the gasket into the connector .
 Screw sub-assembly into the connector
 body .
 (recommended coupling torque 13.27 in.lb)
 -



BONMOMINI