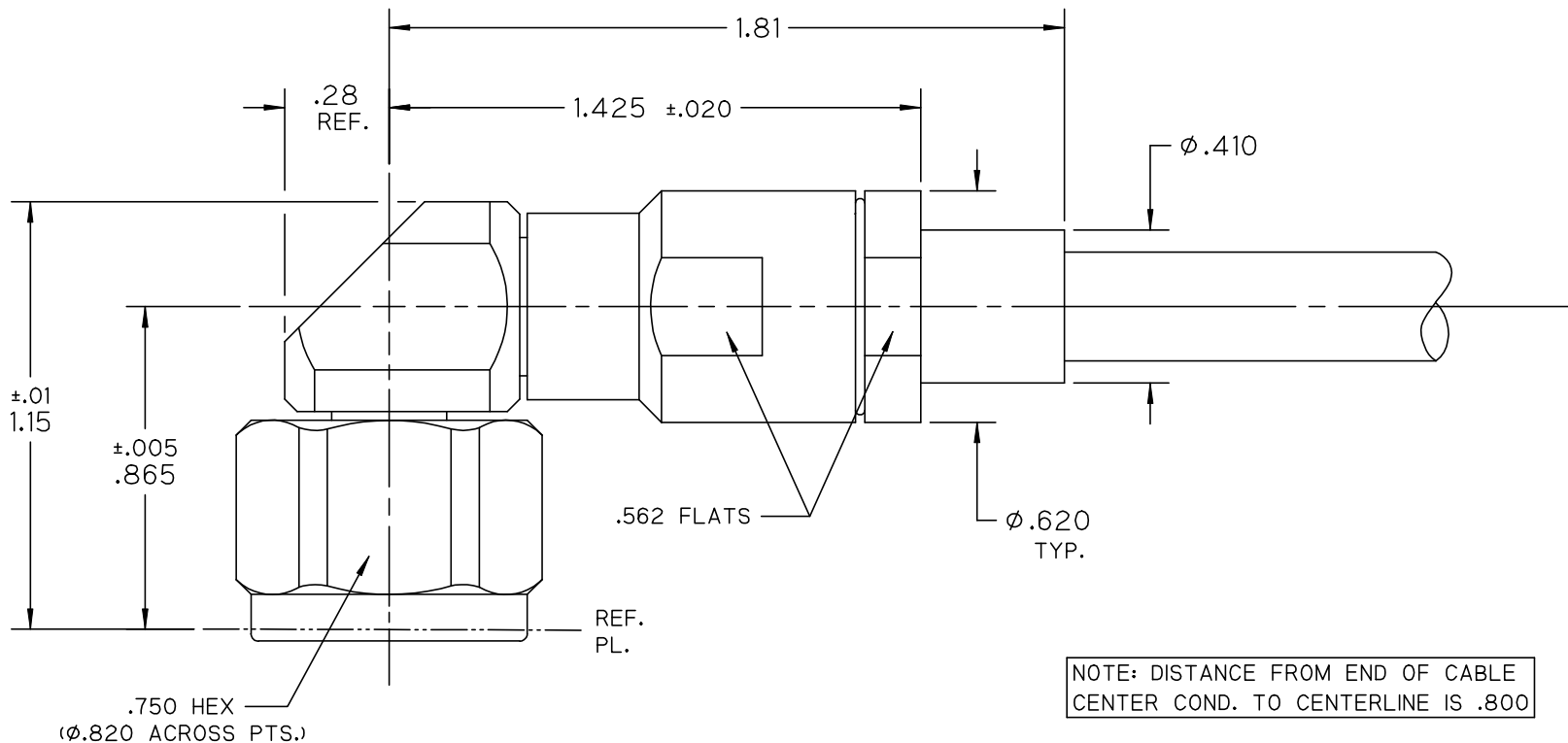


\*\*\*\*\* THIS DRAWING AND ITS CONTENTS ARE THE SOLE PROPERTY OF PRECISION CONNECTOR INC. AND ARE SUBJECT TO CHANGE WITHOUT NOTICE UNLESS OTHERWISE SPECIFIED \*\*\*\*\*

REV.	DESCRIPTION	DATE	BY	APPVD
A	INITIAL RELEASE	08/25/09	MJK	MJK
B	Ø.410 WAS Ø.445	09/11/09	MJK	MJK



NOTES :

1.0 MATERIALS:

- 1.1 BODY, COUPLING & CLAMP NUTS: STEEL, CORROSION RESISTANT PER ASTM-A582, UNS NO. S30300.
- 1.2 CENTER COND.: BERYLLIUM COPPER PER ASTM-B196, UNS C17300.
- 1.3 SOLDER FERRULE: BRASS PER ASTM-B16, UNS C36000.
- 1.5 GASKET & O-RING: SILICONE RUBBER PER A-A-59588.
- 1.6 INSULATOR(S): PTFE FLUOROCARBON PER ASTM-D1710.
- 1.7 DIEL. BEAD(S): POLYETHERIMIDE THERMOPLASTIC (ULTEM 1000) PER ASTM-D5205.

2.0 FINISHES:

- 2.1 CENTER CONTACT & SOLDER FERRULE: GOLD PLATE PER ASTM-B488, 50 MICROINCHES MIN. THK. OVER ELECTROLYTIC NICKEL PLATE PER ASTM-B689 50 MICROINCHES MIN. THK.
- 2.2 BODY, COUPLING & CLAMP NUTS: PASSIVATE PER SAE-AMS-2700.
- 2.3 GASKET, O-RING & DIELECTRICS: NONE.
- 3.0 INTERFACE: TYPE N PLUG PER PCI INTERFACE SPECIFICATION PCI-PNP-TL.



TOLERANCES UNLESS OTHERWISE SPECIFIED		DRAWN BY: MJK		DESC.: TYPE N RA PLUG, SOLDER CLAMP FOR SEMFLEX LA290 CABLE			
		DATE: 08/25/09					
.XX	± .02	CAGE CODE		SCALE	SHEET NO.	DRAWING NUMBER	
.XXX	± .005	4MJR5		2:1	1 OF 1	3288-0L	
.XXXX	± .0005						REV
ANGLES	± 2°						B