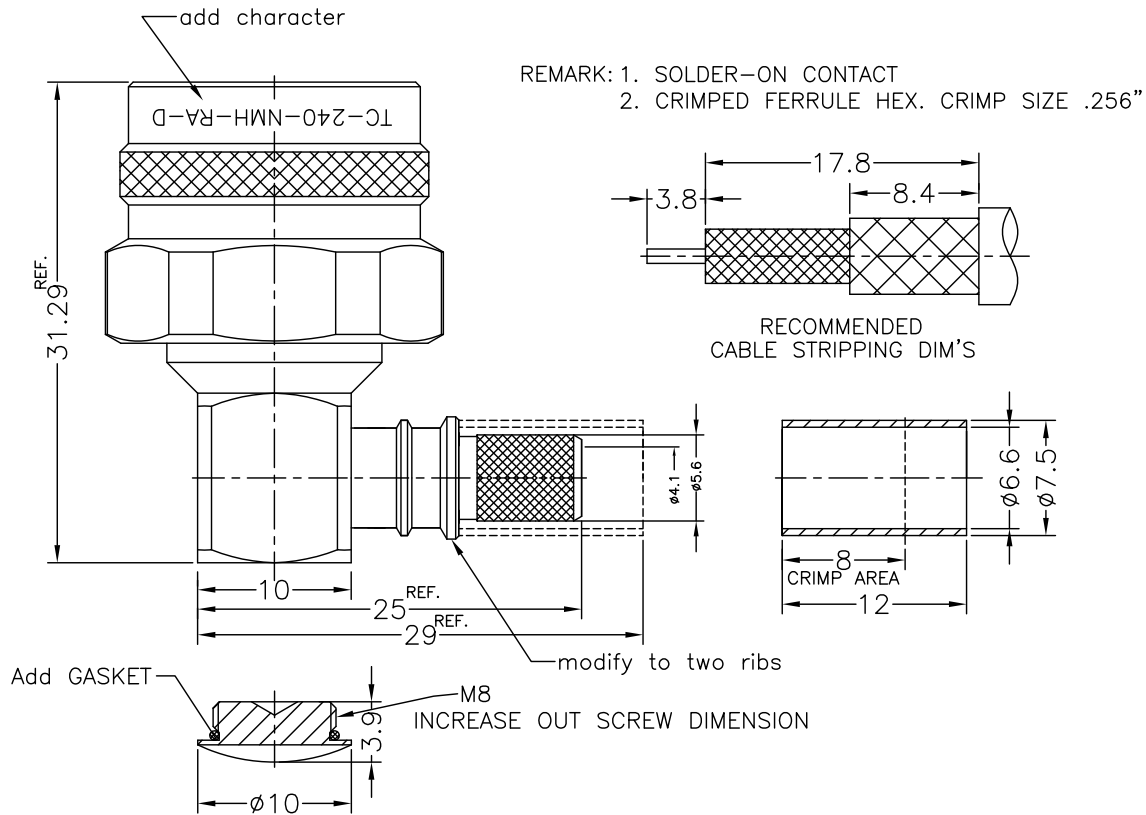


**NOTICE OF PROPRIETARY RIGHTS** THIS DOCUMENT CONTAINS CONFIDENTIAL TECHNICAL DATA, INCLUDING TRADE SECRETS, PROPRIETARY TO TIMES MICROWAVE SYSTEMS. DISCLOSURE OF THIS DATA IS EXPRESSLY CONDITIONED UPON YOUR ASSENT THAT ITS USE IS LIMITED TO USE WITHIN YOUR COMPANY ONLY. ANY OTHER USE IS STRICTLY PROHIBITED WITHOUT THE PRIOR WRITTEN CONSENT OF TIMES MICROWAVE SYSTEMS.

SYM	REVISION DESCRIPTION	DFTM	DATE	APPD	DATE
A	RELEASED FOR PRODUCTION	K.A.M.	5/17/10	J.D.B.	5/24/10



MATERIALS AND PLATING		UNIT: MICRO-INCHES
BODY,SHELL	BRASS C3604	ALBALOY PLATING THICK 80 MIN.
CONTACT PIN	BRASS C3604	GOLD PL. 50/COPPER
INSULATOR	TEFLON MIL-P-19468	
FERRULE	COPPER	ALBALOY PLATING THICK 80 MIN.
GASKET	SILICONE	RED OR BLACK

ELECTRICAL CHARACTERISTICS	
Impedance	50 Ω
Voltage rating	750V(rms)
Frequency range	0~6GHz
Dielectric withstanding voltage	1000V
resistance	Center contact: ≤3mΩ Outer contact≤2mΩ
Insulation resistance	≥5000MΩ
Insertion loss	According as the cable
RF- leakage	N/A
VSWR	≤1.2 (DC-2GHz) ≤1.3 (DC-6GHz)
3rd Intermodulation	---

MECHANICAL CHARACTERISTICS	
Force to engage and disengage	6 lbs MAX.
Center contact retention force	6 lbs MIN.
Coupling torque	30 in-lbs MIN.
Coupling nut retention force	100 lbs MIN.
Durability	≥ 500 cycles

ENVIRONMENTAL CHARACTERISTICS	
Temperature range	-55°C- +155°C
Thermal shock	US MIL- STD 202, Meth. 107, Cond. B
Vibration	US MIL- STD 202, Meth. 204, Cond. B
Shock	US MIL- STD 202, Meth. 213, Cond. I
Climatic class	IEC 60068 65/165/21

MATL:	UNLESS OTHERWISE SPECIFIED		DFTM: K. A. M.	TIMES MICROWAVE SYSTEMS
	ALL DIMENSIONS ARE IN mm		DATE: 5/17/10	
USED ON:	TOLERANCES ON DECIMALS		CHKD: J. D. B.	N MALE, RIGHT ANGLE FOR LMR-240 CABLE
	.X ± 0.2 .XX ± 0.1		DATE: 5/24/10	
SCALE: ~	ANGLES ± 3		APPD: J. D. B.	1 of 1
	SURFACE FINSH: 1.6μ		DATE: 5/24/10	
DWG. SIZE: A	DO NOT SCALE DRAWING	CODE IDENT: 68999	DATE: 5/24/10	SD3190-2426