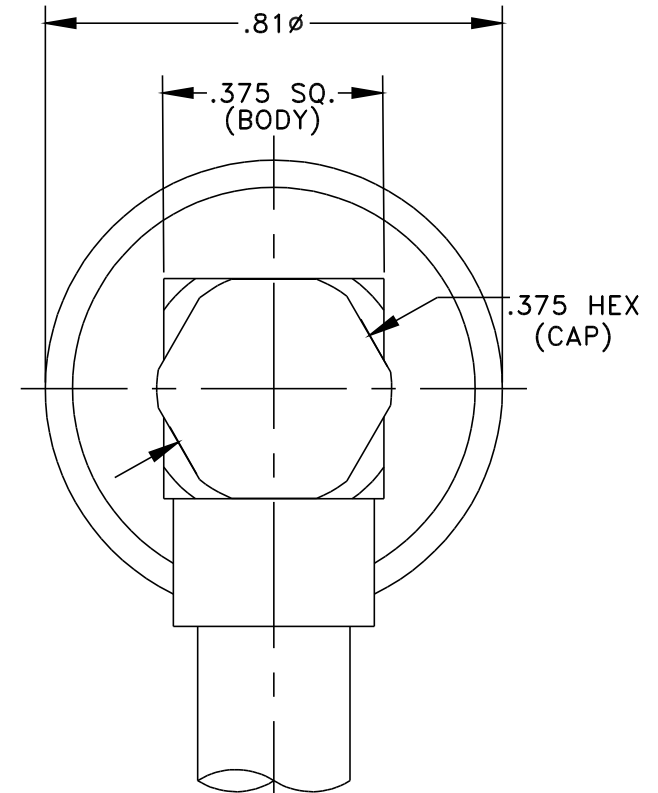
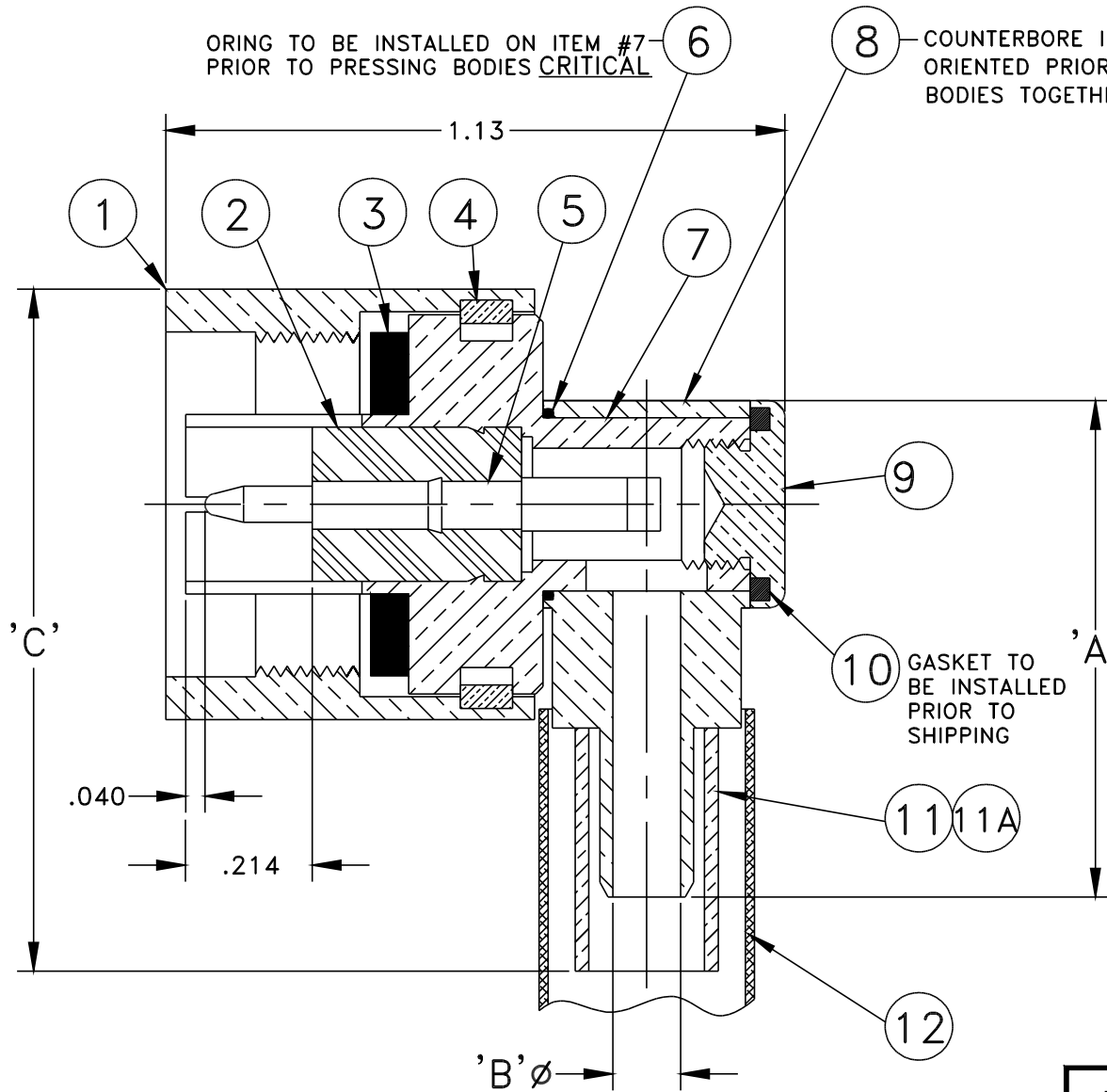


THIS DOCUMENT CONTAINS PROPRIETARY INFORMATION & MAY NOT BE REPRODUCED OR DISCLOSED TO OTHERS WITHOUT WRITTEN CONSENT FROM CONNECTRONICS, INC.

ORING TO BE INSTALLED ON ITEM #7 PRIOR TO PRESSING BODIES CRITICAL

8 COUNTERBORE IN CUBE MUST ORIENTED PRIOR TO PRESSING BODIES TOGETHER. CRITICAL



THIS VIEW SHOWN WITHOUT SHRINK TUBE

REVISIONS

ECN1030 ADDED -2, -3, & -4, JB 7/11/96	-A-
ECN1072 ADDED NOTES	-B-
ECN1077 ADDED ASSY. INSTRUCTIONS FOR -2 & -3	-C-
ECN1079 ADDED COLUMN FOR LOCKWIRE HOLES	-D-
ECN1456 -2 ITEM #9 OMITTED	-E-
ECN1723 ADDED SHEET #2	-F-
ECN2944 ADDED -5, -6, & -7	-G-
ECN2964 ADDED -8.	-H-
ECN3220 SEE SHEET 2.	-I-
ECN4255V ADDED SHRINK TUBING AND O-RING.	-K-
ECN4534 SEE SHEET 2.	-L-
ECN4544 SEE SHEET 2.	-M-
	2/2/07

CONNECTRONICS, INC.
EDINBURGH, INDIANA

FSCM 43608

TOLERANCES
UNLESS OTHERWISE SPECIFIED

DWG BY: JOHN B.

DATE: 12/2/94

APVD BY:

SCALE:

2 PL DEC ± .020

MATERIAL:

3 PL DEC ± .005

FINISH:

ANG. DIM ± 1/2°

DESCRIPTION: N
CABLE PLUG, RIGHT ANGLE
CRIMP, WEATHERPROOF

DRAWING NO.
46-305
SHT 1 OF 2

DASH #	BODY FINISH	CONTACT FINISH	'A'	'B'∅	'C'	ASSEMBLY INSTRUCTIONS	CABLE RG /U:	NOTES	L'WIRE HOLES
-1	NICKEL	GOLD	.901	.126 ±.003	1.31		RG/55, 142, 223, 400		NO

REVISIONS
ECN1723 -F- ADDED SHEET #2 ADDED -5, -6, & -7 KLR 09/17/98
ECN2944 -G- ADDED -8. -6 & -7 WERE ITEM #9 OMITTED. RLC 2/21/02
ECN2964 -H- -5 THRU -7, ASSY INSTR WERE EMTEQ ES-105-2. RLC 3/11/02
ECN3220 -J- UPDATED CABLE GROUP RLC 11/26/02
ECN4255V -K- SEE SHEET 1. DZ 1/6/06
ECN4534 -L- -7: UPDATED CABLE AND NOTES RLC 1/19/07
ECN4544 -M- REDESIGNED CAP, ADDED ORING BETWEEN BODIES TO MAKE WEATHERPROOF. REMOVE -4. RLC 2/2/07

THIS DOCUMENT CONTAINS PROPRIETARY INFORMATION & MAY NOT BE REPRODUCED OR DISCLOSED TO OTHERS WITHOUT WRITTEN CONSENT FROM CONNECTRONICS, INC.

		FSCM 43608
		TOLERANCES UNLESS OTHERWISE SPECIFIED
DWG BY: KLR	DATE: 09/17/98	2 PL DEC ± .020
APVD BY:	SCALE: _____	3 PL DEC ± .005
MATERIAL: _____		ANG. DIM ±1/2°
FINISH: _____		
DESCRIPTION: N CABLE PLUG, RIGHT ANGLE CRIMP, WEATHERPROOF		DRAWING NO. 46-305 SHT 2 OF 2