

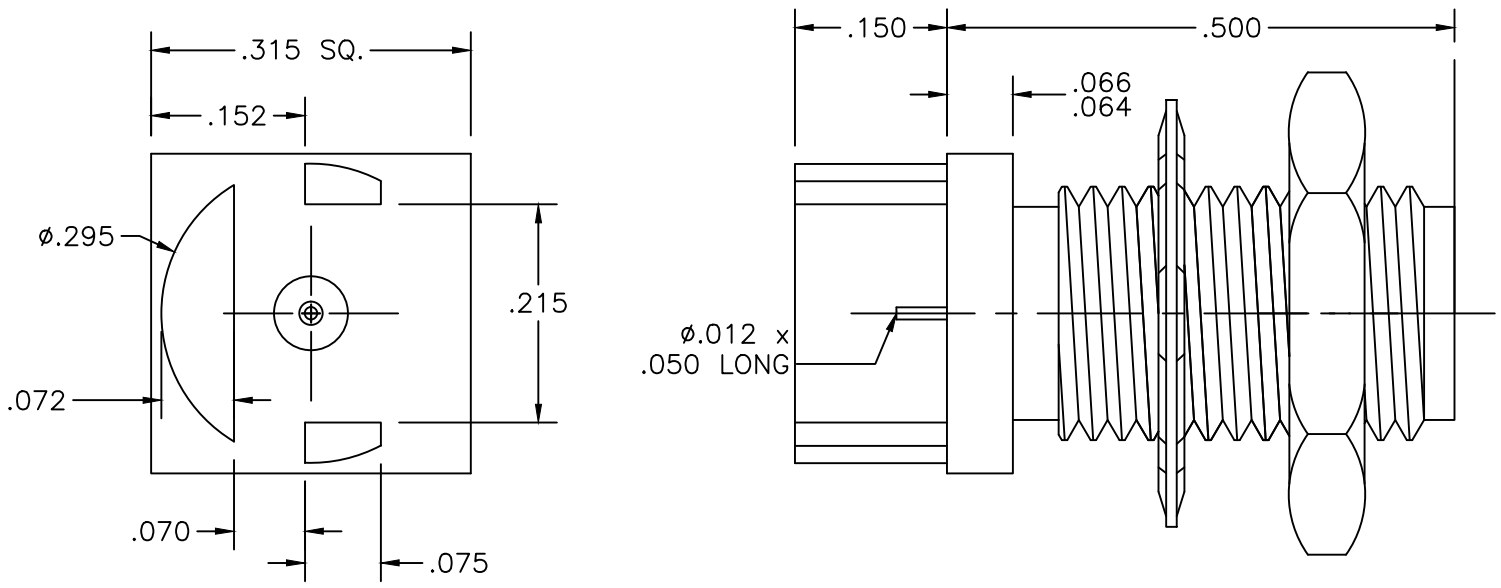
21-146-1000-17


NOTES:

Materials: Beryllium Copper per ASTM-B-196, QQ-C-530  
 PTFE Fluorocarbon per ASTM-D-1710 Type 1

Finish: Center Conductor shall be plated per MIL-G-45204  
 Type II, Class 1 over Nickel plate per QQ-N-290.  
 Body, Washer, Jam Nut shall be Nickel plate per QQ-N-290.

Frequency: DC-27 GHz  
 VSWR: 1.2 TO 27 GHz  
 Insertion Loss: .05(SQRT(F(GHz)))



LTR	DESCRIPTION	DATE	APPR.	DRAWN <b>DRP</b>	CHECKED	USED ON	 SRI CONNECTOR GAGE CO. 3950 DOW ROAD MELBOURNE FL 32934	
-	REL	3/12		APPR.	SCALE	21-146-1000-17		
				UNLESS OTHERWISE SPECIFIED: 1. REMOVE ALL BURRS 2. BREAK ALL CORNERS & EDGES .005 R. MAX 3. CHAMFER 1st & LAST THREADS 45° 4. SURFACE FINISHED 32√ UNLESS OTHERWISE SPECIFIED. 5. DIAMETERS ON COMMON CENTERS TO BE CONCENTRIC WITHIN .002 T.I.R. 6. ALL DIMENSIONS ARE AFTER PLATING.			TITLE	
				DIMENSIONS ARE IN INCHES TOLERANCES			SMA Jack to PCB SQUARE FLANGE NICKEL PLATED	
				DECIMALS .X ±.030 .XX ±.010 .XXX ±.005	FRACTIONAL ± 1/64	ANGULAR .X° ±1°0' .X'X' ±15'		FINISH
				SIZE <b>A</b>	FSCM NO. <b>OHMO1</b>	SHEET <b>1</b>		DWG. NO. <b>21-146-1000-17</b>