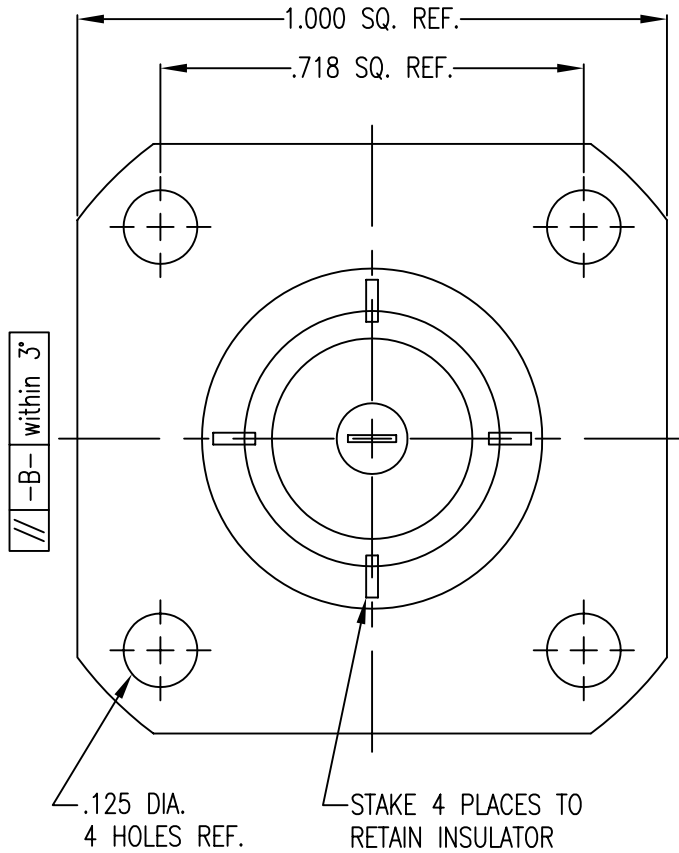


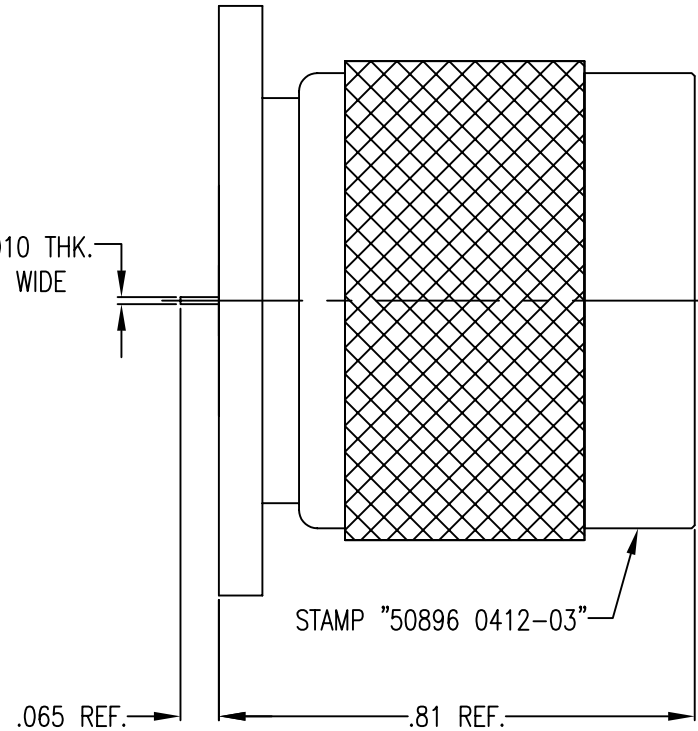
- 1.0 PERFORMANCE
- 1.1 FREQUENCY RANGE: DC-11GHz
- 1.2 VOLTAGE RATING: 1000V RMS (sea level)
- 1.3 NOMINAL IMPEDANCE: 50 OHMS
- 1.4 DWV: 2500 V RMS @ 60 Hz (sea level)

- 1.5 TEMPERATURE RANGE: -65°C TO +165°C
- 2.0 MATERIALS
- 2.1 DIELECTRICS: TEFLON, ASTM-D-1710
- 2.2 CONTACTS: BRASS PER ASTM-B-16
- 2.3 OTHER METAL PARTS: BRASS, ASTM-B-16
- 3.0 FINISHES:
- 3.1 CENTER CONTACTS: SILVER PLATED
- 3.2 ALL OTHER METAL PARTS: SILVER PLATED
- 4.0 MECHANICAL
- 4.1 INTERFACE IN ACCORDANCE WITH MIL-STD-348

DWG NO. OL-0412-03-1 REV. A



TAB .005/.010 THK.
.083 MAX. WIDE



PROPRIETARY
THIS DRAWING CONTAINS CONFIDENTIAL INFORMATION
PROPRIETARY TO SAN*TRON INC. IT MUST NOT BE
REPRODUCED OR DISCLOSED TO OTHERS OR USED IN
ANY OTHER WAY, IN WHOLE OR PART EXCEPT AS
AUTHORIZED IN WRITING BY SAN*TRON INCORPORATED.



SAN • TRON, INC.

4 NEWBURYPORT TPK, IPSWICH, MA 01938

REMOVE ALL BURRS AND SHARP
EDGES .005 MAX.
UNLESS OTHERWISE STATED
ALL DIMENSIONS ARE IN INCHES
AND APPLY AFTER PLATING

TITLE PANEL RECEPTACLE, STRAIGHT,
N, MALE, TABBED

Rev.	Revisions	Date	Dwn.	Appd.
A	ORIGINAL	4/3/98		

UNSPECIFIED TOL.	DWN	MM	4/3/98
DEC. ± .005	CHKD	SJS	4/3/98
FRAC. ± 1/64	APPR		
ANG. ± 1/2°			

MATERIAL: SEE NOTE 2.0	FINISH: SEE NOTE 3.0
---------------------------	-------------------------

RECOM. STOCK SIZE	FT/M PCS	QTY REQD
-------------------	----------	----------

CONCENTRICITY .004 TIR
ALL MACHINED SUFACES

FSCM NO. 50896	DWG NO. OL-0412-03-1	REV. A
SCALE 4:1		