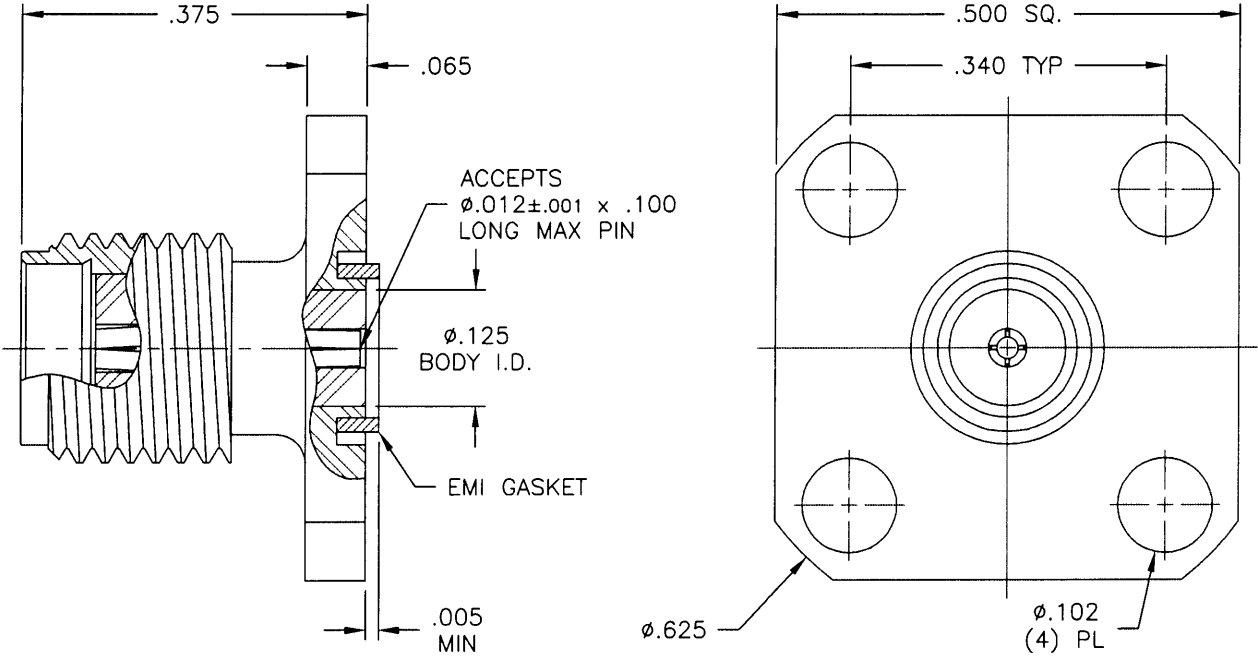


REVISIONS			
REV	DESCRIPTION	DATE	APPROVED
A	INITIAL RELEASE	04/12/10	A.D.M.



NOTES:

MATERIALS:

1. BODY = STAINLESS STEEL PER ASTM A582, ALLOY 303, CONDITION "A".
2. INSULATOR = VIRGIN WHITE TEFLON PER ASTM D1710, GRADE 1, TYPE I, CLASS "B".
3. CONTACT = BERYLLIUM COPPER PER ASTM B196, ALLOY C17300, TEMPER TD04.
4. EMI GASKET = CONDUCTIVE SILVER/SILICONE ELASTOMERS 70 DUROMETER.

FINISHES:

1. BODY = PASSIVATE PER QQ-P-35, TYPE VI.
2. CONTACT = GOLD PLATE PER MIL-G-45204, TYPE II, CLASS 1, GRADE C, OVER .00010 TO .00020 STRESS FREE SULFAMATE NICKEL PER QQ-N-290.

UNLESS OTHERWISE SPECIFIED DIMENSIONS ARE IN INCHES TOLERANCES ON	DWN:	DATE	
	A.D.M.	04/12/10	
	CHKD:	DATE	
DECIMAL	ANGLE	D.N.	04/12/10
		APVD:	DATE
		J.M.	04/12/10

Property of Radiall

This document cannot be reproduced or communicated to a third party without prior written permission of RADIALL.

**SMA STRAIGHT JACK
4 HOLE FLANGE MOUNT
HERMETIC SEAL LAUNCHERS**

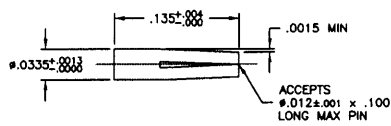
REFERENCE:	MATERIALS & FINISHES:
ORIGINATOR: R.A.R. DATE: 03/18/83	SEE NOTES

SIZE A	FSCM NO. 19505	DWG NO. 9X45-9513-000	REV A
SCALE 5:1	THIRD ANGLE PROJECTION		SHEET 1 OF 2

9X45-9513-000

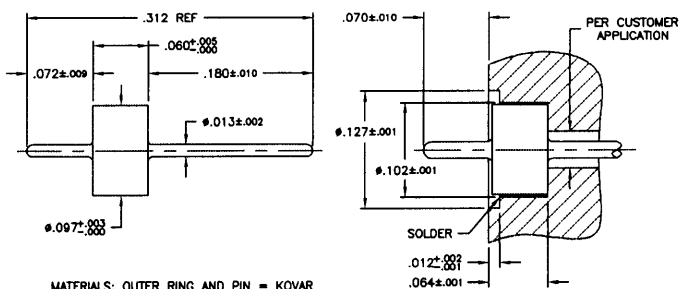
ORDERING INFORMATION

9045-9513-000 CONNECTOR ONLY, SUPPLIED TO DWG SHEET 1
 9145-9513-000 CONNECTOR SUPPLIED TO DWG WITH GLASS SEAL ONLY
 9245-9513-000 CONNECTOR SUPPLIED TO DWG WITH GLASS SEAL AND CONTACT
 9345-9513-000 CONNECTOR SUPPLIED TO DWG WITH CONTACT ONLY



MATERIAL: BERYLLIUM COPPER PER ASTM B196, ALLOY C17300, TEMPER TD04.
 FINISH: GOLD PLATE PER MIL-G-45204, TYPE II, CLASS 1, GRADE C, OVER .00010 TO .00020 STRESS FREE SULFAMATE NICKEL PER QQ-N-290.

RECOMMENDED MOUNTING



MATERIALS: OUTER RING AND PIN = KOVAR
 GLASS BEAD = CORNING 7072
 FINISHES: OUTER RING AND PIN = GOLD PLATE PER MIL-G-45204, TYPE II, GRADE C, CLASS I, OVER NICKEL PER MIL-G-26074, CLASS I, OVER COPPER PER MIL-C-14550.

UNLESS OTHERWISE SPECIFIED
 DIMENSIONS ARE IN INCHES
 TOLERANCES ON

REFERENCE



Property of Radiall
 This document cannot be reproduced or
 communicated to a third party without prior
 written permission of RADIALL.

DECIMAL	ANGLE

SIZE A	FORM NO. 19505	DWG NO. 9X45-9513-000	REV A
SCALE 10:1	THIRD ANGLE PROJECTION		SHEET 2 OF 2

9X45-9513-000