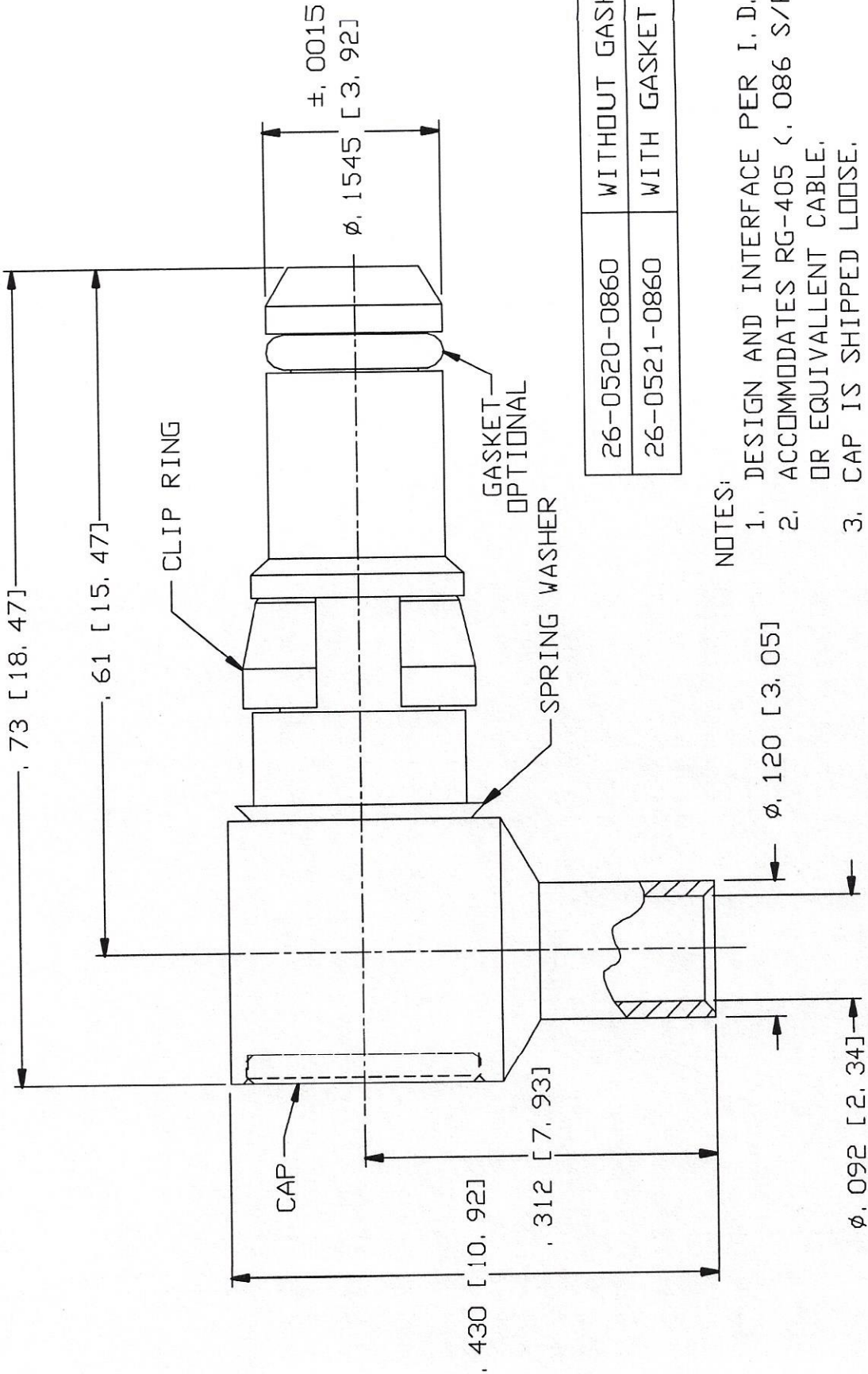


CAD DRAWING - NO MANUAL REVISIONS



| | |
|--------------|----------------|
| 26-0520-0860 | WITHOUT GASKET |
| 26-0521-0860 | WITH GASKET |

NOTES:

1. DESIGN AND INTERFACE PER I. D. S. -26.
2. ACCOMMODATES RG-405 (, 086 S/R) OR EQUIVALENT CABLE.
3. CAP IS SHIPPED LOOSE.

| | | | | | | | | | |
|---|---------------|-----------------------|--|--------------------------------|---------------------|--------------------|------------------|----------------------------------|--------------------|
| <p>PALCO ENGINEERING 22 GREAT HILL RD., NAUGATUCK, CT 06770 UNLESS OTHERWISE SPECIFIED, PALCO WORKMANSHIP STANDARDS APPLY TOLERANCES ON DECIMALS: XX ±.01 .XXX ±.005 ANGLES ±1/2° 32' DIMENSIONS IN INCHES OR (METRIC) DO NOT SCALE PRINTS</p> | | <p>DATE: 08/17/89</p> | <p>DESCRIPTION: RIGHT ANGLE PKZ PLUG FOR φ, 086 S/R CABLE (DIRECT SOLDER)</p> | <p>APPROVED: HN</p> | <p>ENGINEER: YT</p> | <p>CHECKED: HN</p> | <p>DRAWN: MY</p> | <p>DRAWING NO.: 26-052X-0860</p> | <p>FSCM: 58167</p> |
| REV. | DESCRIPTION | DATE | APPR. | <p>CATALOG ITEM</p> | | | | | |
| J | PER ECN 10225 | 03/09/10 | JEN | <p>PLATING OPT. A, B, C, D</p> | | | | | |
| H | PER ECN 5101 | 06/10/99 | HN | | | | | | |
| G | PER ECN 2685 | 12/07/94 | HN | | | | | | |

THE INFORMATION IN THIS DOCUMENT IS CONFIDENTIAL AND PROPRIETARY AND MAY NOT BE USED FOR ANY PURPOSE WITHOUT THE WRITTEN CONSENT OF PALCO.

| | | | | | | |
|--|----------------|--|---|---------------|----------|------|
| INTERFACE DESIGN STANDARD | |  | REV | DESCRIPTION | DATE | APPR |
| IDS-26 | | | H | PER ECN 12280 | 02/08/16 | RMB |
| PAGE 1 OF 1 | DATE: 02/28/94 | | I | PER ECN 12843 | 04/12/18 | JEM |
| DRAWN: JEM | APPROVED: HN | | J | PER ECN 13033 | 07/23/18 | JEM |
| 22 GREAT HILL ROAD, NAUGATUCK, CT. 06770 | | | PHONE: (800) 323-9562 FAX: (630) 206-1801 | | | |

DESCRIPTION: 26 SERIES, SIZE 8 PkZ ®

MATERIALS

BODIES:

PLUG BODIES - BRASS PER ASTM B 16.
RECEPTACLE BODIES - BRASS PER ASTM B 16.

INSULATORS - VIRGIN TEFLON (PTFE) PER ASTM D 1710 AND ASTM D 1457.
RETAINING RING - BERYLLIUM COPPER PER ASTM B 196.
MALE CONTACT - BERYLLIUM COPPER PER ASTM B 197.
FEMALE CONTACTS - BERYLLIUM COPPER PER ASTM B 197.
WEATHER SEAL GASKET (OPTIONAL) - SILICONE RUBBER PER ZZ-R-765.
EMI GASKET - BERYLLIUM COPPER ASTM B 196.

PLATING:

GOLD PER MIL-DTL-45204.
COPPER PER MIL-C-14550.
NICKEL PER QQ-N-290.

FINISHES (ADD LETTER TO END OF PART NUMBER)

"A" - .000050 MIN. GOLD OVER NICKEL
"B" - .000030 MIN. GOLD OVER NICKEL
"C" - .000050 MIN. GOLD OVER COPPER
"D" - .000030 MIN. GOLD OVER COPPER

MATING CHARACTERISTICS

OUTER BODIES _____ 48 OZ. (3 LBS) MAX. INSERTION.
2 OZ. (0.125 LBS) MIN. WITHDRAWAL.
CENTER CONTACTS _____ 32 OZ. (2 LBS) MAX. INSERTION.
.5 OZ. (0.031 LBS) MIN. WITHDRAWAL.
HOUSING RETENTION _____ 192 OZ. (12 LBS.) MIN.
AXIAL MATING TOLERANCE _____ .090

ELECTRICALS

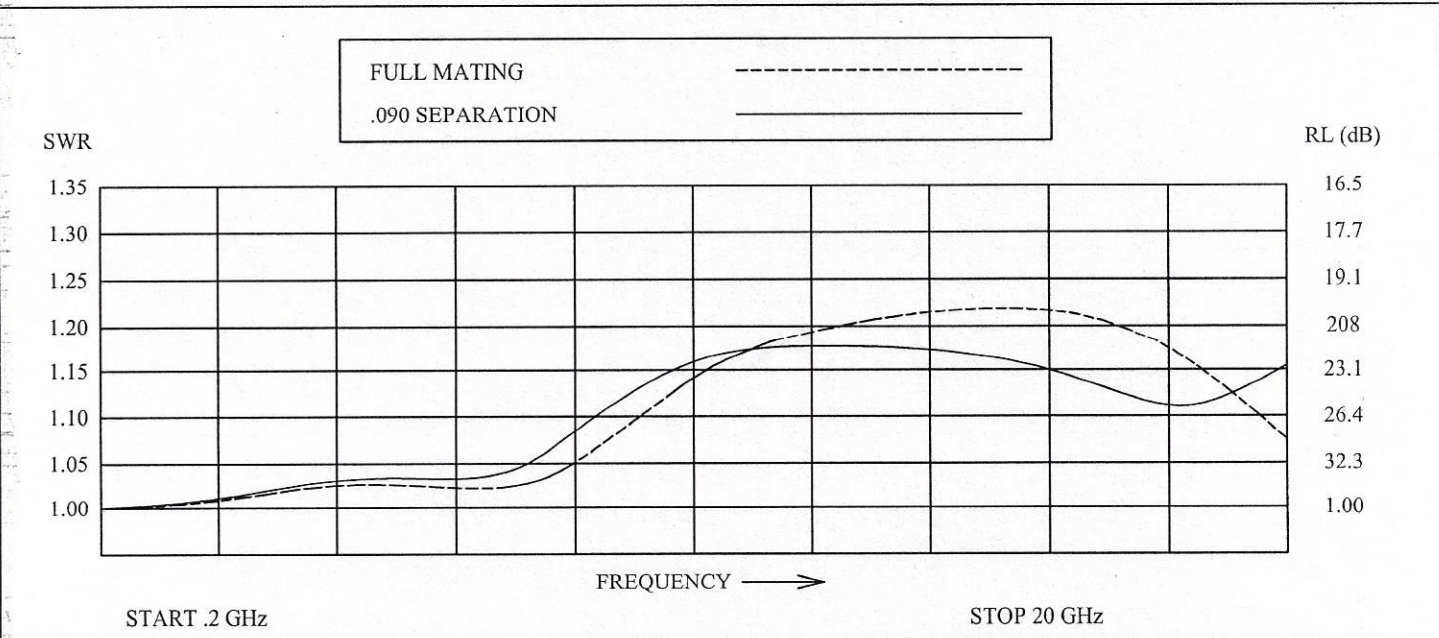
FREQUENCY RANGE: DC TO 32 GHz.
VOLTAGE RATING STRAIGHT: 1000 VRMS.
VOLTAGE RATING ANGLED: 800 VRMS.
CURRENT RATING: 5 AMPS.
INSULATION RESISTANCE: 2000 MEGOHMS MIN.
INSERTION LOSS: $.06\sqrt{f(\text{GHz})}$ dB

CONTACT RESISTANCE: CENTER CONTACT 5 MILLIOHMS
CONTACT RESISTANCE: OUTER CONTACT 3 MILLIOHMS
VSWR: $1.08 + .009*f(\text{GHz.})$, RG-402 CABLE.
 $1.15 + .020*f(\text{GHz.})$, RG-174 & RG-316 CABLES.
 $1.15 + .010*f(\text{GHz.})$, RG-142, 223, 303 & 400 CABLES.

ENVIRONMENTAL

OPERATING TEMPERATURE: -65°C to +165°C
VIBRATION: MIL-STD-202, METHOD 204, TEST CONDITION D.
SHOCK: MIL-STD-202, METHOD 213, TEST CONDITION I.
SALT SPRAY: MIL-STD-1344, METHOD 1001, CONDITION B.
DURABILITY: 500 CYCLES.

THERMAL SHOCK: MIL-STD-202, METHOD 107, TEST CONDITION B, EXCEPT HIGH TEMPERATURE SHALL BE +85°C.
MOISTURE RESISTANCE: MIL-STD-202, METHOD 106.
INSULATION RESISTANCE 2000 MEGOHMS POST HUMIDITY.

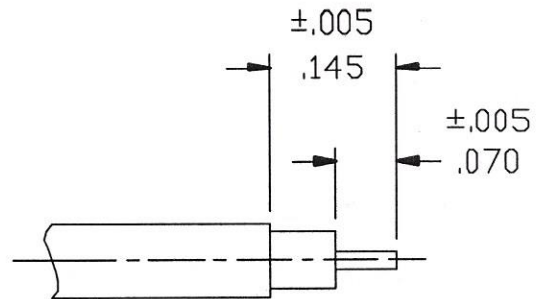


***NOTES:**

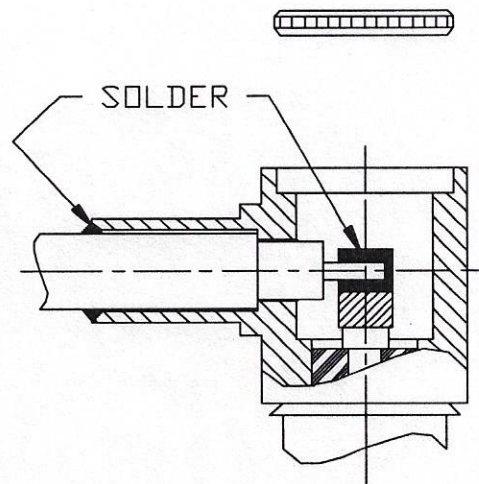
- 1) DIMENSIONS ARE IN INCHES UNLESS OTHERWISE SPECIFIED [METRIC].
- 2) DIMENSIONS ARE SHOWN FOR REFERENCE PURPOSES ONLY.

| | | | | | | |
|---------------------------|----------------|---|-----|---------------|----------|------|
| CABLE ASSEMBLY PROCEDURE | | PALEO CONNECTOR 22 GREAT HILL ROAD, NAUGATUCK, CT. 06770 PHONE: (203) 729-9090 FAX: (203) 723-1794 | REV | DESCRIPTION | DATE | APPR |
| P/N | 26-052X-0860 | | H | PER ECN 5101 | 06/10/99 | HN |
| PAGE 1 OF 1 | DATE: 07/22/96 | | J | PER ECN 10225 | 03/09/10 | JEM |
| DRAWN: MY | APPROVED: HN | | | | | |
| FOR USE WITH RG-405 CABLE | | | | | | |

STEP 1
 TRIM CABLE TO DIMENSIONS SHOWN.
 TIN CENTER CONDUCTOR.



STEP 2
 INSERT CABLE INTO BODY UNTIL
 CABLE BOTTOMS IN BODY. SOLDER
 CABLE JACKET INTO BODY, THEN
 SOLDER CENTER CONDUCTOR TO
 CENTER CONTACT OF CONNECTOR.



STEP 3
 CLEAN AND INSPECT THE SOLDER
 JOINTS. FIXTURE BODY INTO A
 SMALL ARBOR PRESS, BEING CAREFUL
 NOT TO DAMAGE CONNECTOR AND
 PRESS CAP INTO BODY.

