

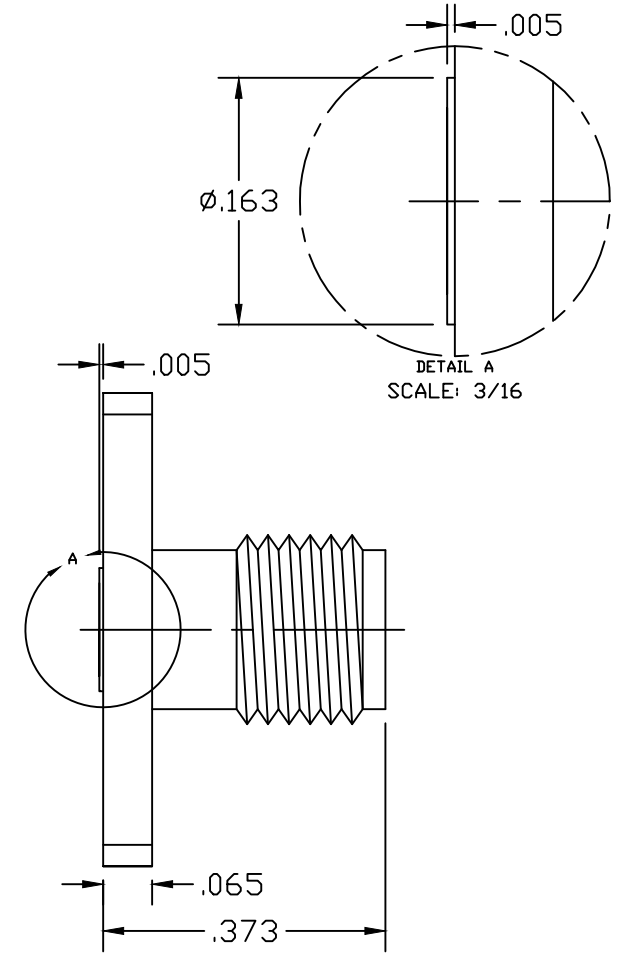
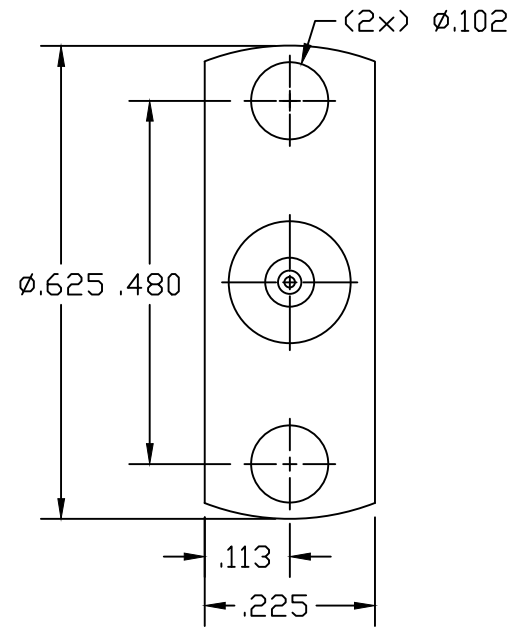
NOTES:

Materials: SST. corrosion-resistant, Non Magnetic 303, per ASTM A484 and A582. Beryllium Copper per ASTM-B-196, QQ-C-530
 PTFE Fluorocarbon per ASTM-D-1710 Type 1
 Oxide-Noryl (tm), MIL-P-46129


Finish: Center Conductors and solder components shall be plated per MIL-G-45204 Type II, Class 1 over Nickel plate per QQ-N-290.
 Body and Body components shall be passivated per ASTM A380.

Frequency: DC-18 GHz
VSWR: 1.15 TO 18 GHz
Insertion Loss: $.05\sqrt{\text{Frequency}}$

21-130-1500-90



, CEEGRVU'ÓQ234'RIP

LTR	DESCRIPTION	DATE	APPR.	DRAWN LMW	CHECKED	USED ON	 SRI CONNECTOR GAGE CO. 751 NORTH DRIVE MELBOURNE FL. 32934	
-	REL	06/03		APPR.	SCALE	21-130-1500-90		
				UNLESS OTHERWISE SPECIFIED: 1. REMOVE ALL BURRS 2. BREAK ALL CORNERS & EDGES .005 R. MAX 3. CHAMFER 1st & LAST THREADS 45° 4. SURFACE FINISHED 32√ UNLESS OTHERWISE SPECIFIED. 5. DIAMETERS ON COMMON CENTERS TO BE CONCENTRIC WITHIN .002 T.I.R. 6. ALL DIMENSIONS ARE AFTER PLATING.			TITLE	
				DIMENSIONS ARE IN INCHES TOLERANCES			SMA JACK RECEPTACLE (2 HOLE FLANGE)	
				DECIMALS	FRACTIONAL	ANGULAR		SIZE
				.X ±.030 .XX ±.010 .XXX +.005	± 1/64	.X° ±1°0' .X'X' ±15'		FSCM NO. OHMO1
							SHEET 1	
							DWG. NO. 21-130-1500-90	