

DWG NO. OL-1206-117-1		REV. A
PART NUMBER 1206-117-PJ	BODY PASSIVATE	CONTACT Au/Ni

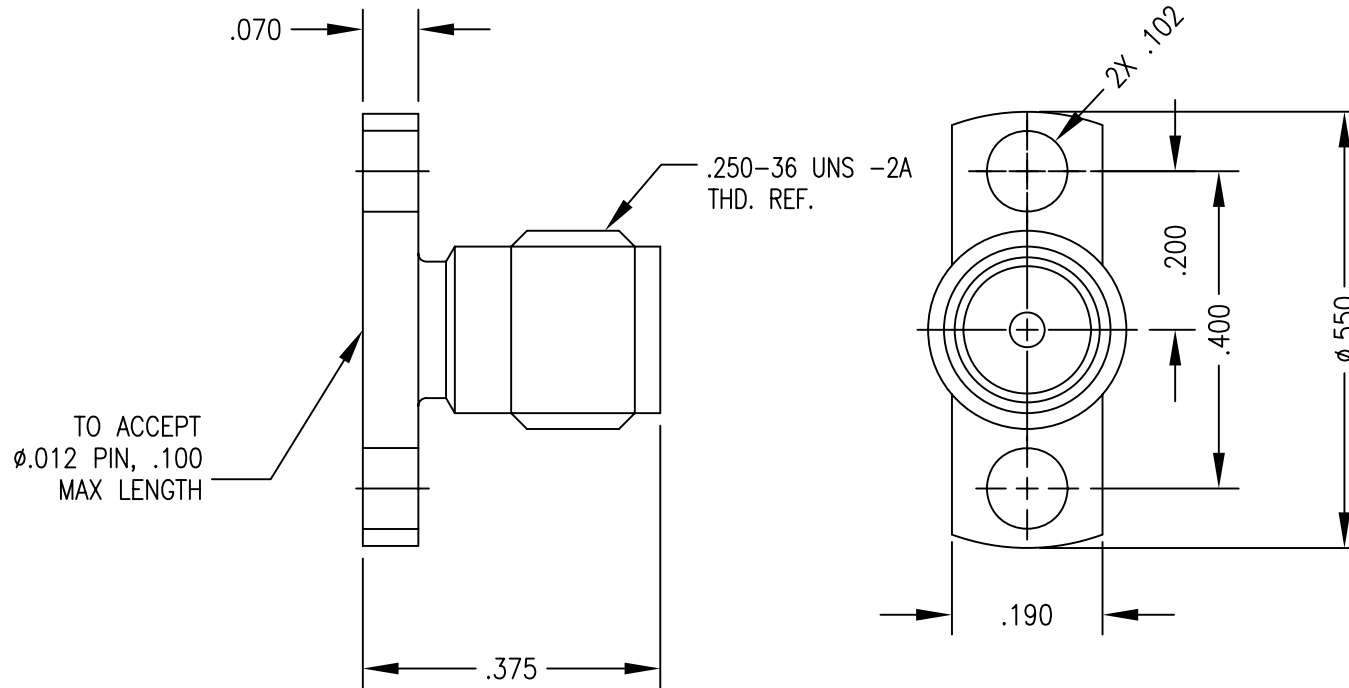
PLATING PER SAN-TRON SPEC. 7.3.1-8

- 1.0 PERFORMANCE:
 1.1 FREQUENCY RANGE DC-18 GHz
 1.2 SYSTEM IMPEDANCE 50 OHMS
 1.3 DWV: 1000 Vrms @ 60 Hz (SEA LEVEL)
 1.4 VOLTAGE RATING: 335 Vrms (SEA LEVEL)
 1.5 TEMP RANGE: -65 / +165 °C

- 2.0 MATERIALS
 2.1 SOCKET CONTACT: BeCu
 2.2 BODY: SS 303
 2.3 INSULATOR: PTFE
 3.0 FINISHES
 3.1 CONTACTS: MINIMUM PLATE OF .000050 GOLD OVER .000080 NICKEL
 3.2 BODY: PASSIVATED

- 4.0 MECHANICAL
 4.1 INTERFACES PER MIL-STD-348
 4.2 SOCKET MATING CHARACTERISTICS:
 INSERTION FORCE: ϕ .013, 20 OZ TYP, 30 OZ MAX
 WITHDRAWAL FORCE: ϕ .011, 0.5 OZ MIN
 4.4 CONTACT RETENTION: 4 LBS MIN
 4.5 DURABILITY: 500 CYCLES

DO NOT SCALE DRAWING

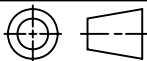


TO ACCEPT
 ϕ .012 PIN, .100
 MAX LENGTH

A	PRODUCTION RELEASE	NEW	9/8/08	JTH	FSH		
1	PRELIMINARY: DO NOT MFG	NEW	9/5/08				
Rev.	Revisions	Disp.	Date	Dwn.	Appd.		
	Ref.: SK-	REMOVE ALL BURRS AND SHARP EDGES .005 MAX.	INTERPRET PER ASME Y14.5M-1994				

THIS DRAWING CONTAINS CONFIDENTIAL INFORMATION PROPRIETARY TO SAN-TRON, INC. IT MUST NOT BE REPRODUCED OR DISCLOSED TO OTHERS OR USED IN ANY OTHER WAY, IN WHOLE OR PART EXCEPT AS AUTHORIZED IN WRITING BY SAN-TRON, INC.

UNLESS OTHERWISE SPECIFIED:
 ALL DIMENSIONS ARE IN INCHES.
 ALL DIMENSIONS ARE AFTER PLATING.
 .XXX = \pm .005 ALL MACHINED SURFACES ϕ MAX.
 .XX = \pm .01 ANG. \pm 1/2' FRACTIONAL = \pm 1/64
 $\text{\textcircled{C}}$.004 MAX. TIR $\text{\textcircled{L}}$ AXIS .001



THIRD ANGLE PROJECTION

DWN	JTH	9/5/08
CHKD	SJS	9/8/08
APPR	FSH	9/8/08



SAN-TRON, INC.

4 NEWBURYPORT TPK. IPSWICH MA USA 01938
 TEL: 978-356-1585 FAX: 978-356-1573
 WWW.santron.com E MAIL: santron@santron.com

TITLE SMA PANEL RECEPTACLE, F, STRAIGHT
 2 HOLE, FR .012 PIN

MATERIAL: SEE NOTES FINISH: SEE TABLE

CAGE CODE: 50896	DWG NO. OL-1206-117-1	REV. A
SCALE X:X		