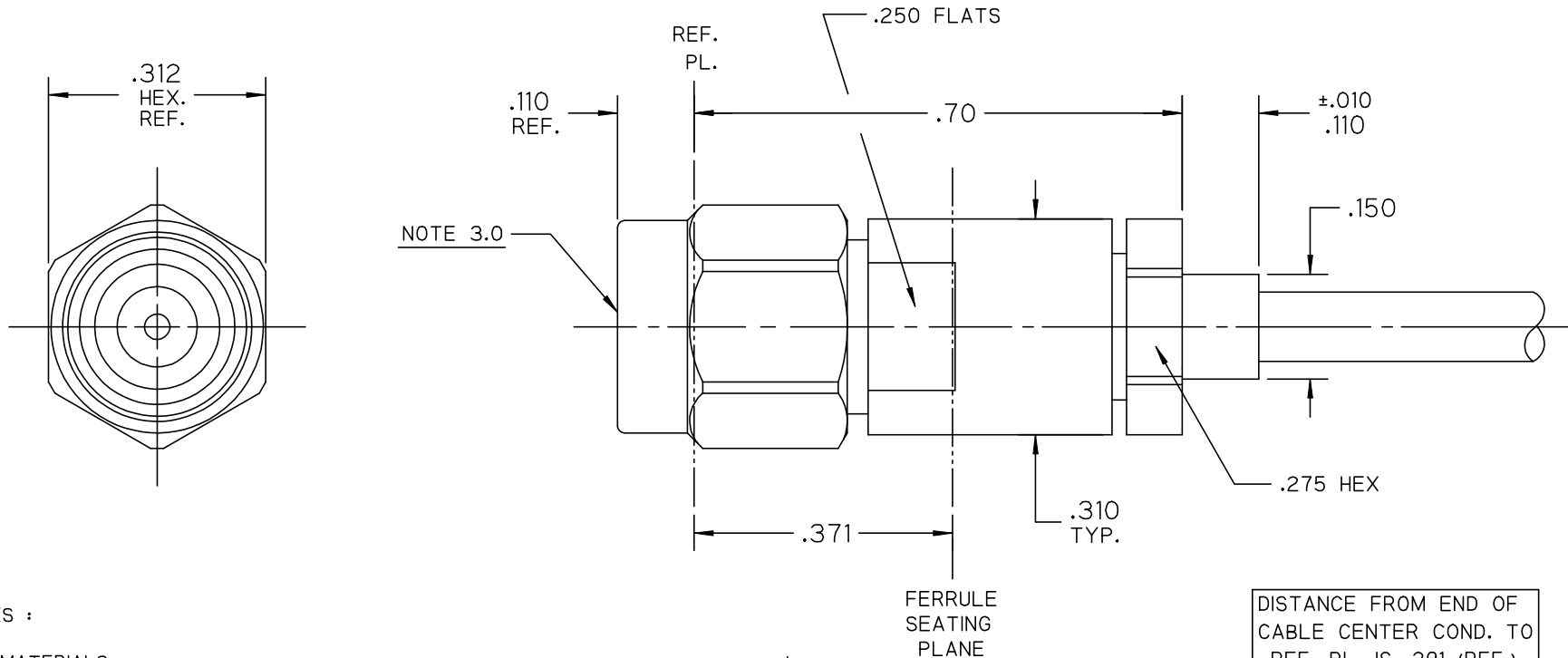


\*\*\*\*\* THIS DRAWING AND ITS CONTENTS ARE THE SOLE PROPERTY OF PRECISION CONNECTOR INC. AND ARE SUBJECT TO CHANGE WITHOUT NOTICE UNLESS OTHERWISE SPECIFIED \*\*\*\*\*

REV.	DESCRIPTION	DATE	BY	APPVD
A	INITIAL RELEASE	03/21/16	KBH	MJK



NOTES :

1.0 MATERIALS:

- 1.1 BODY, COUPLING & CLAMP NUTS: STEEL, CORROSION RESISTANT PER ASTM-A582, UNS NO. S30300.
- 1.2 CENTER COND.: BERYLLIUM COPPER PER ASTM-B196, UNS C17300.
- 1.3 SOLDER FERRULE: BRASS PER ASTM-B16, UNS C36000.
- 1.4 LOCK RING: BERYLLIUM COPPER PER ASTM-B197, UNS C17200.
- 1.5 GASKET & O-RING: SILICONE RUBBER PER A-A-59588.
- 1.6 DIELECTRIC BEAD : POLYCHLOROTRIFLUOROETHYLENE (PCTFE) PER ASTM-D1430-95.

2.0 FINISHES:

- 2.1 CENTER CONTACT & SOLDER FERRULE: GOLD PLATE PER ASTM-B488, 50 MICROINCHES MIN. THK. OVER ELECTROLYTIC NICKEL PLATE PER ASTM-B689 50 MICROINCHES MIN. THK.
- 2.2 BODY, COUPLING & CLAMP NUTS: PASSIVATE PER SAE-AMS-2700.
- 2.3 GASKET, O-RING, LOCK RING & DIELECTRICS: NONE.

3.0 INTERFACE PER PCI-2.92mm-PIN.



TOLERANCES UNLESS OTHERWISE SPECIFIED	DRAWN BY: KBH	DESC.: 2.92mm PLUG, SOLDER CLAMP FOR .085-LL FLEX CABLE			
	DATE: 03/21/16	SCALE	SHEET NO.	DRAWING NUMBER	REV
.XX ± .02	CAGE CODE	5:1	1 OF 1	4079-0L	A
.XXX ± .005	<b>4MJR5</b>				
.XXXX ± .0005					
ANGLES ± 2°					