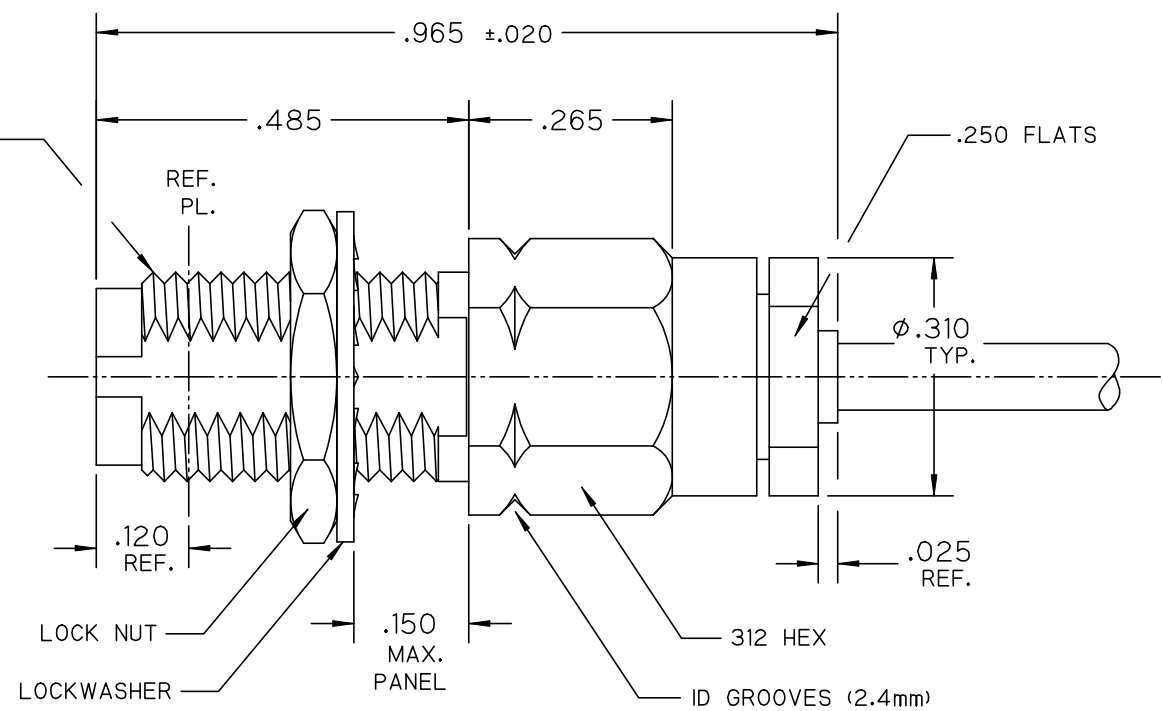
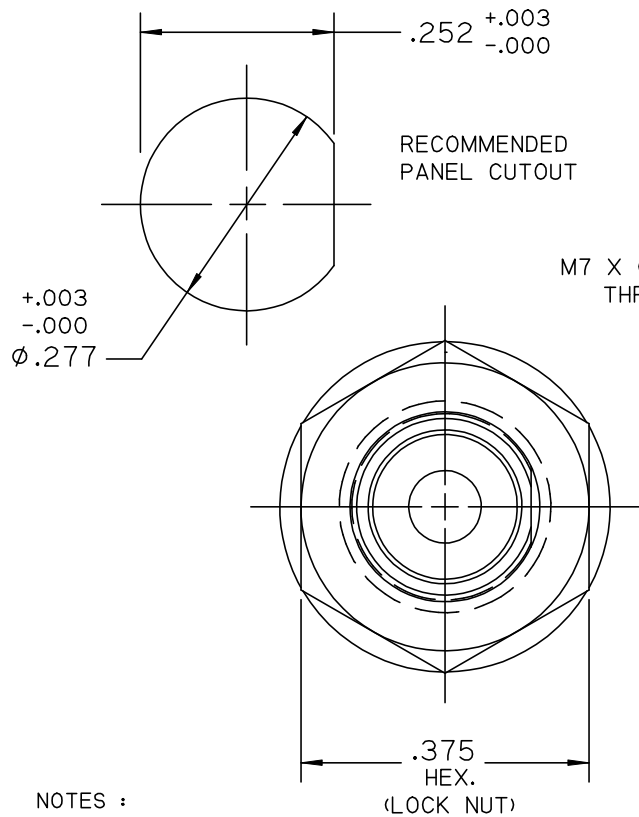


\*\*\*\*\* THIS DRAWING AND ITS CONTENTS ARE THE SOLE PROPERTY OF PRECISION CONNECTOR INC. AND ARE SUBJECT TO CHANGE WITHOUT NOTICE UNLESS OTHERWISE SPECIFIED \*\*\*\*\*

REV.	DESCRIPTION	DATE	BY	APPVD
A	INITIAL RELEASE	12/13/07	MJK	MJK



NOTES :

1.0 MATERIALS:

- 1.1 BODY, BUSHING, CLAMP & LOCK NUTS: STEEL, CORROSION RESISTANT PER ASTM-A582, UNS NO. S30300.
- 1.2 LOCKWASHER: STEEL, CORROSION RESISTANT PER ASTM-A313, UNS NO. S30200.
- 1.3 CENTER COND.: BERYLLIUM COPPER PER ASTM-B196, UNS C17300.
- 1.4 SOLDER FERRULE: BRASS PER ASTM-B16, UNS C36000.
- 1.5 O-RING: SILICONE RUBBER PER A-A-59588.
- 1.6 DIELECTRIC BEAD: POLYETHERIMIDE THERMOPLASTIC (ULTEM 1000) PER ASTM-D5205.

2.0 FINISHES:

- 2.1 BODY, BUSHING, LOCKWASHER, CLAMP & LOCK NUTS: PASSIVATE PER SAE-AMS-2700.
  - 2.2 CENTER CONTACT & SOLDER FERRULE: GOLD PLATE PER ASTM-B488, 50 MICROINCHES MIN. THK. OVER ELECTROLYTIC NICKEL PLATE PER ASTM-B689, 50 MICROINCHES MIN. THK.
  - 2.3 O-RING & DIELECTRIC BEAD: NONE.
- 3.0 INTERFACE PER PCI-2.4mm-SOCKET (MEETS IEEE-STD-P287, FIGURE H.4 EXCEPT CONDUCTOR TOLERANCES AND CONTACT RESSION).



TOLERANCES UNLESS OTHERWISE SPECIFIED	DRAWN BY: MJK	TITLE : OUTLINE DRAWING. 2.4mm BULKHEAD JACK. SOLDER CLAMP FOR RG405 CABLE			
	DATE: 12/13/07	CAGE CODE	SCALE	SHEET NO.	DRAWING NUMBER
.XX ± .02	<b>4MJR5</b>	<b>4:1</b>	1 OF 1	3222-0L	A
.XXX ± .005					
.XXXX ± .0005					
ANGLES ± 2°					