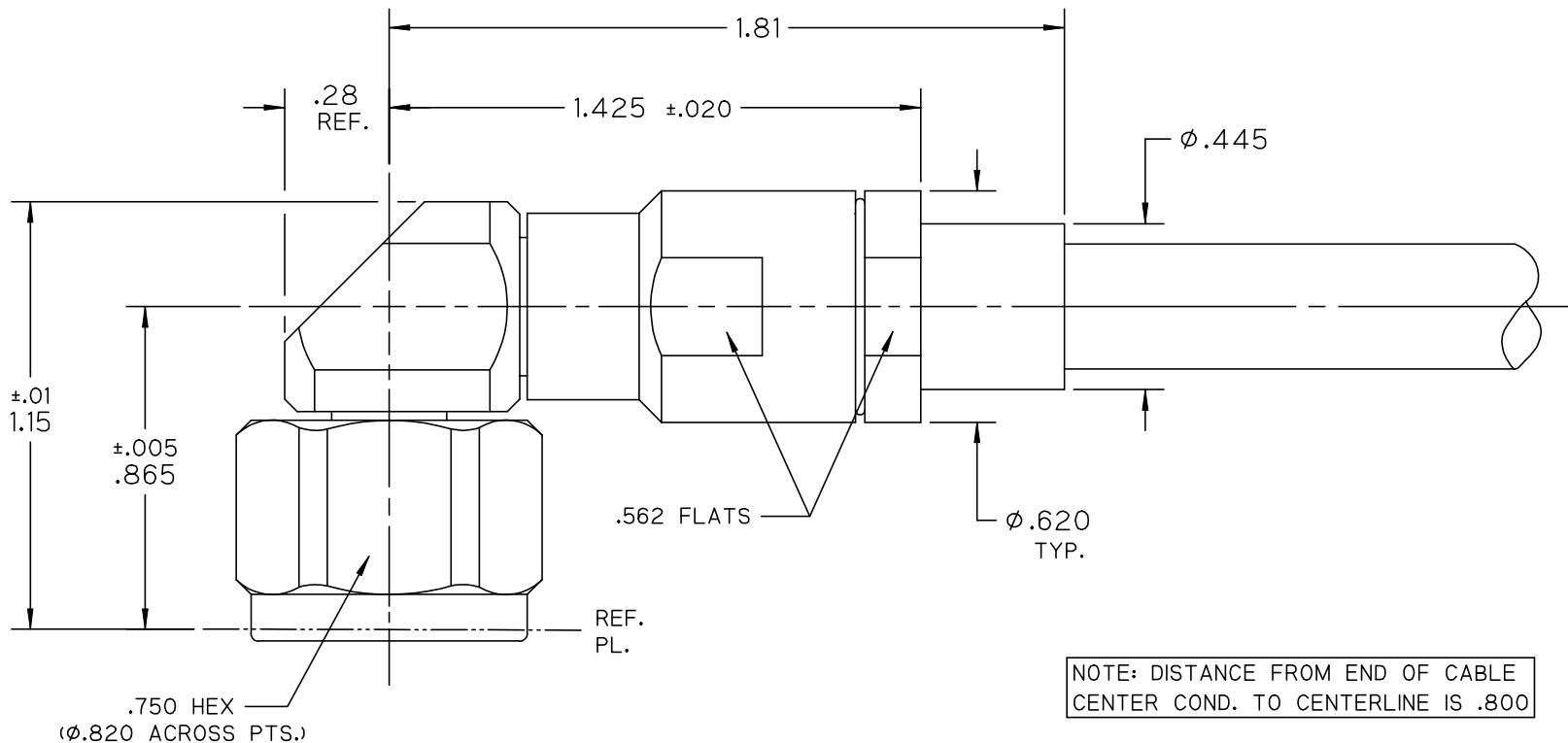


***** THIS DRAWING AND ITS CONTENTS ARE THE SOLE PROPERTY OF PRECISION CONNECTOR INC. AND ARE SUBJECT TO CHANGE WITHOUT NOTICE UNLESS OTHERWISE SPECIFIED *****

REV.	DESCRIPTION	DATE	BY	APPVD
A	INITIAL RELEASE	08/28/08	MJK	MJK



NOTE: DISTANCE FROM END OF CABLE CENTER COND. TO CENTERLINE IS .800

NOTES :

.750 HEX (Ø.820 ACROSS PTS.)

1.0 MATERIALS:

- 1.1 BODY, COUPLING & CLAMP NUTS: STEEL, CORROSION RESISTANT PER ASTM-A582, UNS NO. S30300.
- 1.2 CENTER COND.: BERYLLIUM COPPER PER ASTM-B196, UNS C17300.
- 1.3 SOLDER FERRULE: BRASS PER ASTM-B16, UNS C36000.
- 1.5 GASKET & O-RING: SILICONE RUBBER PER A-A-59588.
- 1.6 INSULATOR(S): PTFE FLUOROCARBON PER ASTM-D1710.
- 1.7 DIEL. BEAD(S): POLYETHERIMIDE THERMOPLASTIC (ULTEM 1000) PER ASTM-D5205.

2.0 FINISHES:

- 2.1 CENTER CONTACT & SOLDER FERRULE: GOLD PLATE PER ASTM-B488, 50 MICROINCHES MIN. THK. OVER ELECTROLYTIC NICKEL PLATE PER ASTM-B689 50 MICROINCHES MIN. THK.
 - 2.2 BODY, COUPLING & CLAMP NUTS: PASSIVATE PER SAE-AMS-2700.
 - 2.3 GASKET, O-RING & DIELECTRICS: NONE.
- 3.0 INTERFACE: TYPE N PLUG PER PCI INTERFACE SPECIFICATION PCI-PNP-TL.



TOLERANCES UNLESS OTHERWISE SPECIFIED	DRAWN BY: MJK	DESC.: TYPE N RA PLUG, SOLDER CLAMP FOR HARBOUR LL335 CABLE			
	DATE: 08/28/08				
.XX ± .02	CAGE CODE	SCALE	SHEET NO.	DRAWING NUMBER	REV
.XXX ± .005	4MJR5	2:1	1 OF 1	3270-0L	A
.XXXX ± .0005					
ANGLES ± 2°					