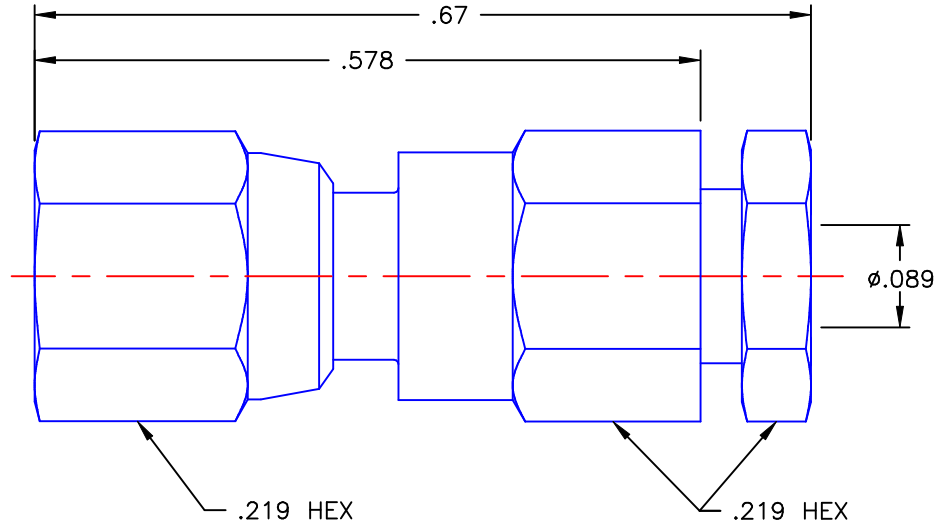


REVISIONS			
REV	DESCRIPTION	DATE	APPROVED
A	INITIAL RELEASE	12/02/10	D.N.





NOTES: CONFORMS TO MIL-C-39012/73-0103

MATERIALS:

1. INSULATORS = VIRGIN WHITE TEFLON PER ASTM D1710, GRADE 1, TYPE I, CLASS "B".
2. CONTACT = BERYLLIUM COPPER PER ASTM B196, ALLOY C17300, TEMPER TD04.
3. ALL OTHER METAL PARTS = BRASS PER ASTM B16, ALLOY C36000, TEMPER H02.

FINISHES:

1. CONTACT = GOLD PLATE PER MIL-G-45204, TYPE II, CLASS 1, GRADE C, OVER .00010 TO .00020 STRESS FREE SULFAMATE NICKEL PER QQ-N-290.
2. ALL OTHER METAL PARTS = SILVER PLATE PER QQ-S-365, TYPE III, GRADE A, .0002 TO .0003 THICK OVER COPPER FLASH PER MIL-C-14550, .000010 TO .000030 THICK.

UNLESS OTHERWISE SPECIFIED DIMENSIONS ARE IN INCHES TOLERANCES ON	DWN:	DATE	 Property of Radial This document cannot be reproduced or communicated to a third party without prior written permission of RADIAL.	SMC STRAIGHT FEMALE PLUG CLAMP TYPE FOR RG-178 & SIMILAR CABLES	
	D.N.	12/02/10			
CHKD:	DATE				
DECIMAL	ANGLE	A.D.M.	12/02/10	SIZE A FSCM NO. 19505 DWG. NO. 1002-6551-902 REV A	
		APVD:	DATE		
		J.M.	12/02/10	SCALE 6:1	THIRD ANGLE PROJECTION 
REFERENCE:	MATERIALS & FINISHES:		SHEET 1 OF 1		
ORIGINATOR: D.N. DATE: 12/02/10	SEE NOTES				

1002-6551-902