

NOTES:

21-146-1000-20

**Materials:**

Beryllium Copper per ASTM-B-196, QQ-C-530  
PTFE Fluorocarbon per ASTM-D-1710 Type 1

**Finish:**

Center Conductors, body and solder components shall be plated per MIL-G-45204 Type II, Class 1 over Nickel plate per QQ-N-290.

**Frequency:**

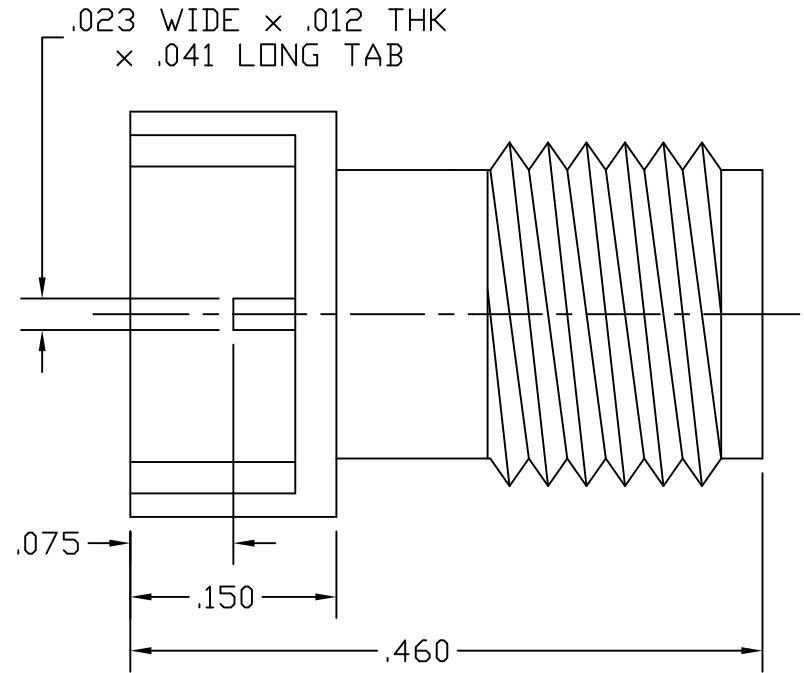
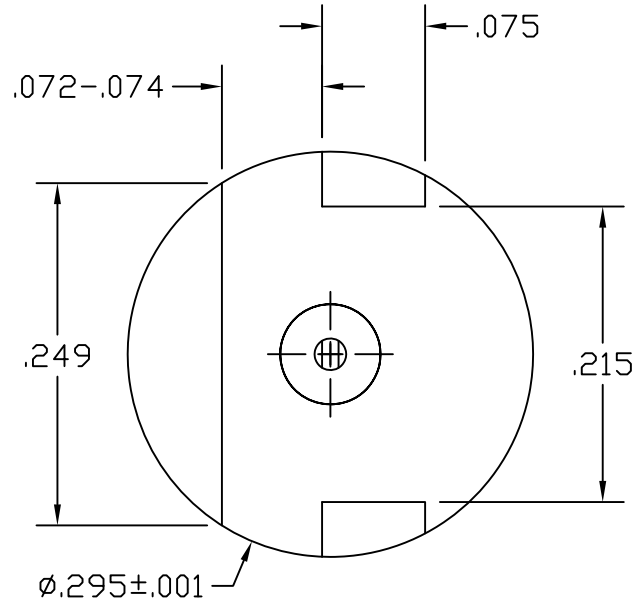
DC-27 GHz


**VSWR:**

1.2 TO 27 GHz

**Insertion Loss:**

$.05\sqrt{\text{Frequency}}$



LTR	DESCRIPTION	DATE	APPR.	DRAWN <b>BF</b>	CHECKED	USED ON	 SRI CONNECTOR GAGE CO. 3950 DOW ROAD MELBOURNE FL. 32934		
-	REL	02/13		APPR.	SCALE	21-146-1000-20			
				UNLESS OTHERWISE SPECIFIED: 1. REMOVE ALL BURRS 2. BREAK ALL CORNERS & EDGES .005 R. MAX 3. CHAMFER 1st & LAST THREADS 45° 4. SURFACE FINISHED 32/ UNLESS OTHERWISE SPECIFIED. 5. DIAMETERS ON COMMON CENTERS TO BE CONCENTRIC WITHIN .002 T.I.R. 6. ALL DIMENSIONS ARE AFTER PLATING.			TITLE		
				DIMENSIONS ARE IN INCHES TOLERANCES			SMA JACK PCB EDGE MOUNT		
				DECIMALS .X ±.030 .XX ±.010 .XXX +.005	FRACTIONAL ± 1/64	ANGULAR .X° ±1°0' .X°X' ±15'		MATERIAL	
								FINISH	
						SIZE A	FSCM NO. OHMO1	SHEET 1	DWG. NO. 21-146-1000-20