

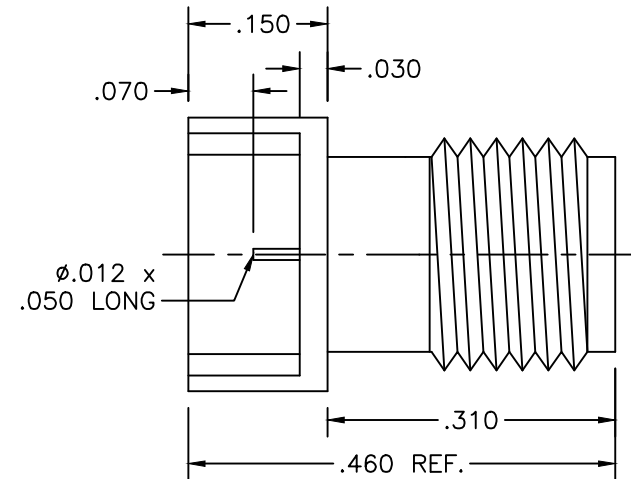
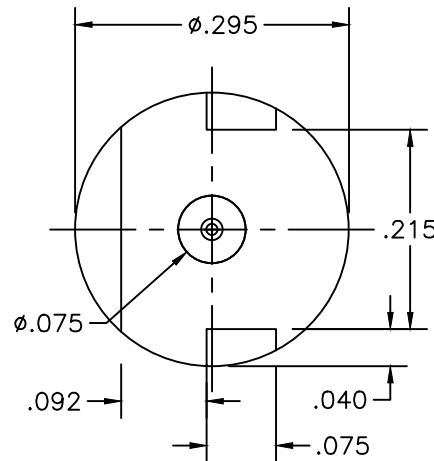
21-146-1000-05


NOTES:

Materials: Beryllium Copper per ASTM-B-196, QQ-C-530
 PTFE Fluorocarbon per ASTM-D-1710 Type 1

Finish: Center Conductors, Body and solder components shall be plated per MIL-G-45204
 Type II, Class 1 over Nickel plate per QQ-N-290.

Frequency: DC-27 GHz
 VSWR: 1.2 TO 27 GHz
 Insertion Loss: .05(SQRT(F(GHz)))



LTR	DESCRIPTION	DATE	APPR.	DRAWN LRH	CHECKED	USED ON	 SRI CONNECTOR GAGE CO. 751 NORTH DRIVE MELBOURNE FL. 32934
-	REL	01/05		APPR.	SCALE	21-146-1000-05	
				UNLESS OTHERWISE SPECIFIED: 1. REMOVE ALL BURRS 2. BREAK ALL CORNERS & EDGES .005 R. MAX 3. CHAMFER 1st & LAST THREADS 45° 4. SURFACE FINISHED 32√ UNLESS OTHERWISE SPECIFIED. 5. DIAMETERS ON COMMON CENTERS TO BE CONCENTRIC WITHIN .002 T.I.R. 6. ALL DIMENSIONS ARE AFTER PLATING.			TITLE
				DIMENSIONS ARE IN INCHES TOLERANCES			SMA FEMALE PCB .084" BOARD
				DECIMALS	FRACTIONAL	ANGULAR	
				.X ±.030 .XX ±.010 .XXX +.005	± 1/64	.X° ±1°0' .X'X' ±15'	
						SIZE	FSCM NO.
						A	OHMO1
						SHEET	DWG. NO.
						1	21-146-1000-05