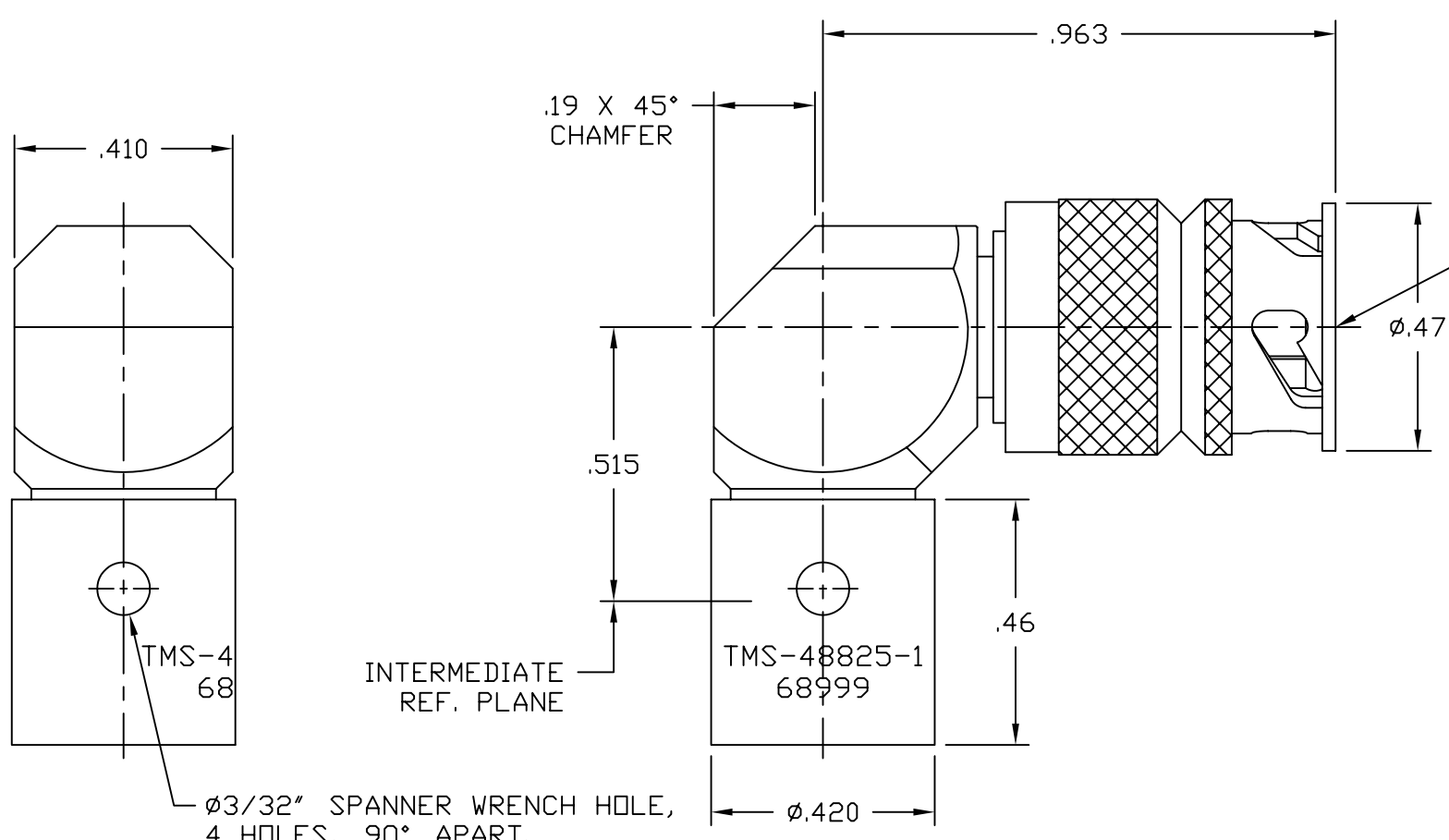


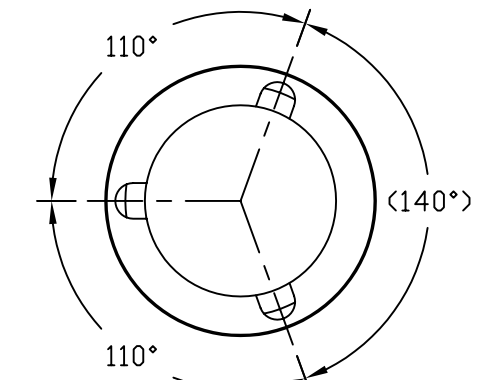
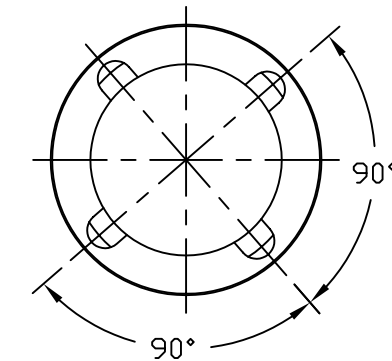
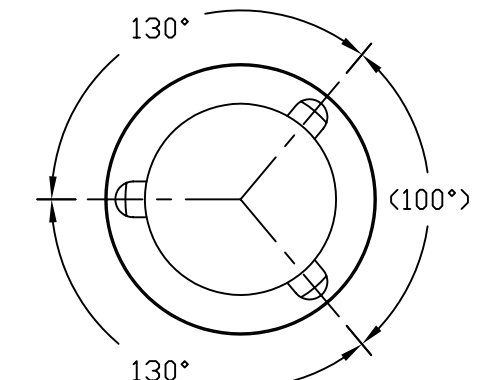
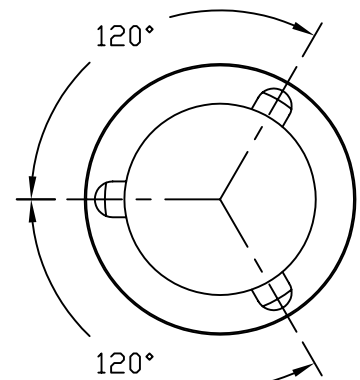
NOTICE OF PROPRIETARY RIGHTS  
 THIS DOCUMENT CONTAINS CONFIDENTIAL TECHNICAL DATA, INCLUDING TRADE SECRETS, PROPRIETARY TO TIMES MICROWAVE SYSTEMS. DISCLOSURE OF THIS DATA IS EXPRESSLY CONDITIONED UPON YOUR ASSENT THAT ITS USE IS LIMITED TO USE WITHIN YOUR COMPANY ONLY. ANY OTHER USE IS STRICTLY PROHIBITED WITHOUT THE PRIOR WRITTEN CONSENT OF TIMES MICROWAVE SYSTEMS.

SD48825-SEE TAB

SYM	REVISION DESCRIPTION	DFTM	DATE	APPD	DATE
A	RELEASED FOR PRODUCTION	D. J. H.	6/28/04	J. D. B.	7/1/04
B	CHANGED PER CDC #24535	D. R. W.	4/1/05	J. D. B.	4/14/05



-2 & -6 (120°/120°/120°)      -3 & -7 (130°/130°/100°)



-1 & -5 (90°/90°/90°/90°)      -4 & -8 (110°/110°/140°)

"TMA" COUPLING NUT CONFIGURATION

DIELECTRICS	TEFLON, ASTM D1457	NONE
BACK & COUPLING NUTS	STAINLESS STEEL, ASTM A582	PASSIVATE, QQ-P-35
90° ANGLE BODY	STAINLESS STEEL, ASTM A582	PASSIVATE, QQ-P-35
CONTACTS	BERYLLIUM COPPER, ASTM B196	GOLD PLATE, MIL-G-45204
PART NAME	MATERIAL & SPEC. NUMBER      FINISH & SPEC. NUMBER	

012340
W.O. NUMBER
MATERIAL:
SEE TABLE

DRAFTSMAN	Dan Hong	6/28/04
CHECKER	John D. Bloomfield	7/1/04
APPROVED	John D. Bloomfield	7/1/04

UNLESS OTHERWISE SPECIFIED  
 ALL DIMENSIONS ARE IN INCHES  
 MACHINED SURFACES FINISH N/A RMS MAX.  
 REMOVE ALL BURRS .005 MAX. BREAK  
 MACHINE CORNERS .005 MAX. FILLET R.  
 TOLERANCES ON DECIMALS  
 .XX ± .03      .XXX ± .005  
 ANGLES ± 1°      FRACTIONS ± 1/32  
 DO NOT SCALE DRAWING

TIMES MICROWAVE SYSTEMS		
TITLE: REPLACEABLE FRONT END -137 90° TMS "TMA" MALE .3438-32UNS INTERMEDIATE		
DWG. SIZE	DRWG. NO.	REV.
B	SD48825-SEE TAB	B
CODE IDENT.	SCALE:	SHEET:
68999	NONE	1 of 1