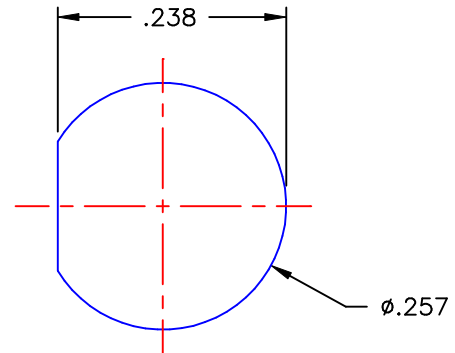
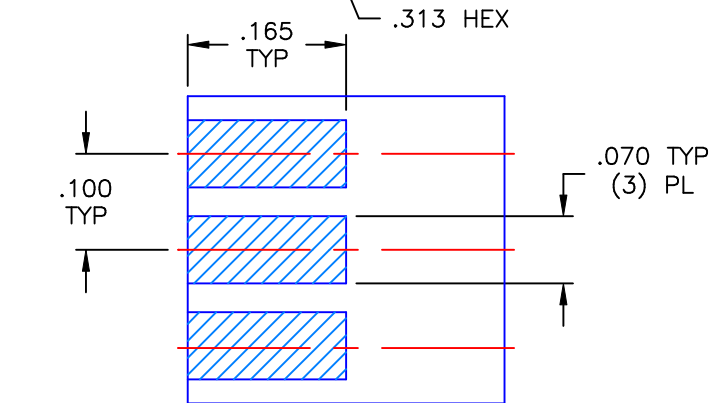
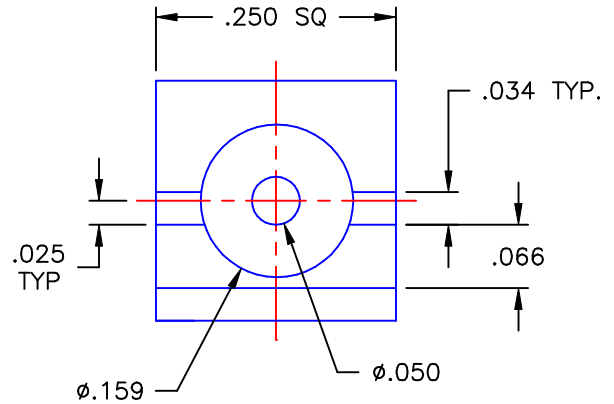
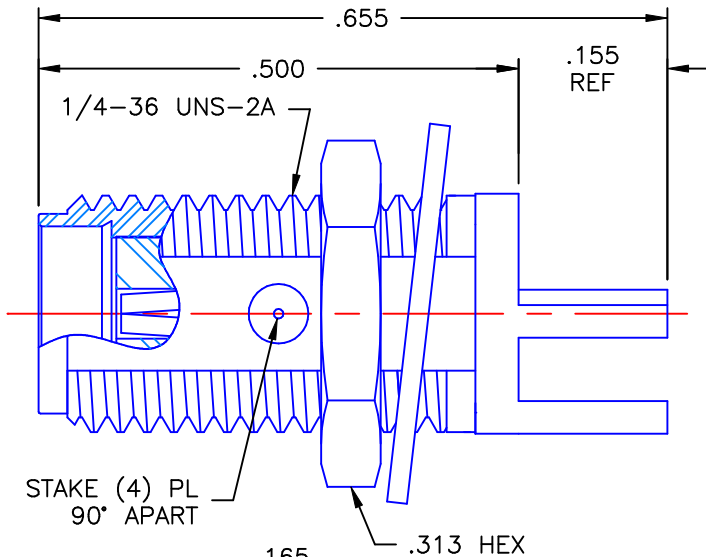


PROPRIETARY INFORMATION
 NOT TO BE RELEASED
 WITHOUT WRITTEN PERMISSION
 FROM AN AUTHORIZED
 REPRESENTATIVE OF
 APPLIED ENGINEERING PRODUCTS

REVISIONS			
REV	DESCRIPTION	DATE	APPROVED
-	INITIAL RELEASE	09/22/98	D.N.
A	ECO #4335	01/24/02	A.D.M.
B	ECO #4630	07/15/02	A.D.M.
C	ECO #5192	12/01/03	D.N.
D	ECO #5197	12/04/03	D.N.



RECOMMENDED MECHANICAL MOUNTING

MOUNTING DIMENSION


NOTES: CONFORMS TO MIL-PRF-39012 SMA SERIES

MATERIAL:

1. BODY & NUT = STAINLESS STEEL PER ASTM A582, ALLOY 303, CONDITION "A".
2. CONTACT = BERYLLIUM COPPER PER ASTM B196, ALLOY C17300, TEMPER TD04.
3. INSULATOR = VIRGIN WHITE TEFLON PER ASTM D1710, GRADE 1, TYPE I, CLASS "B".
4. LOCKWASHER = PHOSPHOR BRONZE PER ASTM B139, COPPER ALLOY C53400, TEMPER H04.

FINISHES:

1. BODY, NUT & LOCKWASHER = GOLD PLATE PER MIL-G-45204, TYPE II, CLASS 0, GRADE C, OVER .000050 TO .00010 STRESS FREE NICKEL PER QQ-N-290.
2. CONTACT = GOLD PLATE PER MIL-G-45204, TYPE II, CLASS 1, GRADE C, OVER .00010 TO .00020 STRESS FREE SULFAMATE NICKEL PER QQ-N-290.

UNLESS OTHERWISE SPECIFIED DIMENSIONS ARE IN INCHES TOLERANCES ON	DWN:	DATE		APPLIED ENGINEERING PRODUCTS			
	D.N.	09/22/98		104 John W. Murphy Dr. New Haven, CT 06513			
DECIMAL	ANGLE	CHKD:	DATE	SMA STRAIGHT JACK BULKHEAD/EDGE MOUNT FOR .062 BOARD			
		E.W.	09/22/98				
		APVD:	DATE	SIZE	FSCM NO.	DWG NO.	REV
		G.A.T.	09/22/98	A	19505	9602-1513-008	D
REFERENCE: QUOTE# V-2023 ORIGINATOR: D.N. DATE: 09/22/98	MATERIAL & FINISHES: SEE NOTES		SCALE 5:1	CODE	SHEET 1 OF 1		

9602-1513-008